
Profile of BC College Transfer Students Admitted to Thompson Rivers University 2003/04 to 2007/08

*Prepared by: Kristen Hamilton, Dorys Crespín-Mueller, and Heather Friesen
Institutional Planning and Analysis, Thompson Rivers University*



**Profile of BC College Transfer Students Admitted to
Thompson Rivers University, 2003/04 to 2007/08**

© Copyright 2009 by the British Columbia Council on Admissions and Transfer.
BCCAT is the official mark of the BC Council on Admissions
and Transfer, as published by the Registrar of Trade-marks of the
Canadian Intellectual Property Office.

This Report is also available in Adobe Acrobat Portable Document
Format (pdf), from BCCAT Online, the Internet service of the BC Council on
Admissions and Transfer: www.bccat.ca. Photocopying and further distribution
of this document is permitted. Please credit source.

Prepared by: Kristen Hamilton, Dorys Crispin-Mueller, and Heather Friesen
Institutional Planning and Analysis
Thompson Rivers University

709 - 555 Seymour Street
Vancouver BC Canada V6B 3H6
bccat.ca | admin@bccat.ca
t 604 412 7700 | f 604 683 0576

Table of Contents

Executive Summary.....	5
Introduction	5
Definitions.....	7
Section A: Profile of BC College Transfer Students.....	8
Year of Admission: 2003/04 to 2007/08.....	8
Table 1. Year of Admission 2003/04 through 2007/08.....	8
Table 2. Regional Distribution by Year of Admission	9
Figure A. Number of BC College Transfer Students by Region	9
Figure B. Number of BC College Transfer Students by Institution, 2003/04 to 2007/08	10
Table 3: Transfer Credits at Admission	11
Table 4: Distribution of Transfer Credits.....	12
Table 5: Transfer Credit Proportional Distributions.....	12
Table 6: Transfer Credit Actual Distributions.....	13
Credits Taken in 1 st Semester at TRU	13
Table 7: Full-time and Part-time Distributions in 1 st Semester.....	14
Figure C: Full-time and Part-time Proportions by Region.....	15
Table 8: Mean Credits Taken in 1 st Semester at TRU.....	16
BC College Transfer Students by Faculty and Program.....	17
Table 9: BC College Transfer Students by Faculty and Region.....	17
Table 10: Distribution of BC College Transfer Students by Region and Faculty	18
Table 11: Distribution of BC College Transfer Students by Faculty and Region	19
Age Distribution	20
Table 12: Average Age at Start by Region and Institution	20
Table 13: Average Age by Academic Year.....	21
Table 14: Age Distribution by Region.....	21
Gender Distribution	22
Table 15: Gender Distribution.....	22
Table 16: Gender Distribution by Region and Institution	22
Section B: Academic Performance Indicators.....	23
Grade Point Average	23
Table 17: 1st Term and Cumulative GPA Comparisons	24
Selected Courses.....	24
Table 18: GPA Comparison for Selected Courses	25
Table 19: GPA Comparison for Selected Courses by Institution	26
Table 20: GPA Comparison for Selected 200 and 300 Level Courses	32
Table 21: GPA Progression Comparison by Year and Region.....	36
Figure D: GPA Progression Comparison.....	36
Figure E: Academic Performance of BC College Transfer Students by Region	37
Figure F: Academic Performance of BC College Transfer Students	38
Table 21B: GPA Progression Comparison 2003/04.....	39
Table 21C: GPA Progression Comparison 2004/05.....	39
Table 21D: GPA Progression Comparison 2005/06.....	39
Table 21E: GPA Progression Comparison 2006/07	40
Table 21F: GPA Progression Comparison 2007/08	40

Section C: Graduates.....	41
Degree Completion Rate.....	41
Table 22: Overall Graduation Rate by Entry Year	41
Table 23: Overall Graduation Rate by Entry Year and Credits Transferred	41
Credential Type.....	42
Table 24: Credentials by Graduation Year, Region, and Credential Type	42
Table 25: Credentials Awarded by Faculty and Type.....	43
Table 26: Credentials Awarded by Faculty and Region.....	43
Table 27: Credentials Awarded by Type, Program, and Region.....	44
Table 28: Distribution of Cumulative GPA at Graduation from TRU by Year.....	45
Table 29: BC College Transfers by Graduation Degree Program	46
Section D: Profile of Students with College Experience.....	47
Table 30: Students with College Experience by Year of Admission	47
Figure G: Number of Students with College Experience by Institution	48
Figure H: Number of Students with College Experience by Region.....	49
Table 31: Average Credits Transferred by Students with College Experience by Region and Institution.....	50
Table 32: Distribution of Students with College Experience by Credits Transferred.....	51
Table 33: Students with College Experience Transfer Credit Actual Distributions.....	52
Table 34: Students with College Experience Transfer Credit Proportional Distributions.....	52
Table 35: Students with College Experience - Full-time and Part-time Proportions by Region and Institution.....	53
Figure I: Students with College Experience - Part-time and Full-time Proportions by Region ...	54
Table 36: Students with College Experience by Faculty and Region	55
Table 37: Students with College Experience Credentials Awarded by Region	55
Table 38: Students with College Experience Age Distribution by Region and Institution	56
Table 39: Gender Distribution of Students with College Experience by Region and Institution	57
Appendices.....	58
Appendix I: Course Abbreviations.....	58

Executive Summary

Introduction

This report provides a comprehensive examination of BC College Transfer students who transferred to Thompson Rivers University (TRU) during the period 2003/04 to 2007/08. Over the past two decades, TRU has evolved from a community college to a university college and finally to a fully legislated university after merging with the BC Open University¹, and its role regarding transfer students has similarly metamorphosed. Where Cariboo College and, to some extent, the University College of the Cariboo had a large base of students transferring to other universities, TRU has become a transfer destination for many provincial, national, and international students.

This report examines the demographic and academic characteristics of new students from BC colleges, university colleges, and institutes who have commenced studies at TRU's on-campus operations over a five-year period. It must be noted that this report does not include the full complement of TRU transfer students; students transferring from any institutions outside BC have been excluded as they are outside the scope of this project. Further, due to the unique nature of TRU's Open Learning division, transfer activities relating to these operations are not included in this report.

Several categories of students will be examined in this report: (a) "BC College Transfer" students who have completed a minimum of 24 credits at an eligible BC college, institute, or university college, (b) "Students with College Experience" who have completed between 1 and 23 credits at institutions described above, and (c) "BC High School Direct Entry" students who have graduated from a BC high school and commenced studies at TRU in the 12 months following graduation.

The report is comprised of four sections:

Part A: Profile of BC College Transfer Students

This section provides a general profile of those BC College Transfer students admitted to TRU with 24 or more transfer credits. It describes the regions and institutions from which credits are transferred, examines the number of credit hours taken in the first semester at TRU, looks at faculty and degree goals of students, and finally provides an analysis of demographic features such as gender and age distribution. TRU has an open admissions policy, and therefore this category is not congruent with the "College transfer as a basis of admission" category that is used by most other universities.

¹ Cariboo College, founded in 1970, became the University College of the Cariboo in 1989 and subsequently transitioned to Thompson Rivers University in 2005.

Part B: Academic Performance Indicators

This section provides detail on key academic performance indicators of BC College Transfer students. Analyses of grade point average upon admission through to graduation are presented, as well as comparisons of course performance and degree completion rates of BC College Transfer and BC High School Direct Entry students.

Part C: Profile of BC Transfer Student Graduates

This section examines those BC College Transfer students who have graduated from TRU, and explores trends in grade point average, program distributions, credentials awarded, and time to completion.

Part D: Profile of Students with College Experience

This section explores the group of students admitted to TRU that had some BC college, university college, or institute experience but less than 24 transfer credits. Mirroring Section A, a general profile is constructed to describe the regions and colleges from which these students come, their grade point averages and transfer credit distribution as well as demographics such as age and gender.

Definitions

BC College Transfer Student

A student who transfers a minimum of 24 eligible credits as articulated in the BC Transfer Guide.

Student with College Experience

A student who transfers between 1 and 23 eligible transfer credits as articulated in the BC Transfer Guide.

BC High School Direct Entry Student

A student who has transitioned to TRU within one year of their high school graduation (as per the Student Transitions Project, Ministry of Advanced Education and Labour Market Development, June 5, 2008).

Grade Point Average

A student's average grades expressed as a numerical format on a standard scale ranging from 0 to 4.33.

Full-time Student

A student who enrolled in at least 12 credits in a given semester.

Part-time Student

A student who enrolled in less than 12 credits in a given semester.

Regions and Colleges²

Interior/Kootenays

College of the Rockies
Nicola Valley Institute of Technology
Okanagan College
Selkirk College

Northern BC/Yukon

College of New Caledonia
Northern Lights College
Northwest Community College
Yukon College

Vancouver Island

Camosun College
Malaspina University-College*
North Island College

Lower Mainland

BC Institute of Technology
Capilano College*
Columbia College
Coquitlam College
Douglas College
Institute of Indigenous Government**
Kwantlen University College*
Langara College
University College of the Fraser Valley*
Vancouver Community College

² * These institutions became universities in September 2008 and were therefore a college and university colleges for the scope of this report. They are now known as Capilano University, Kwantlen Polytechnic University, University of the Fraser Valley, and Vancouver Island University.

** The Institute of Indigenous Government became part of Nicola Valley Institute of Technology in September 2007.

Section A: Profile of BC College Transfer Students

Year of Admission: 2003/04 to 2007/08

During the five year period from summer 2003 to summer of 2008, 622 BC College Transfer students transferred to TRU, comprising 13% of all new students during this time³. An average of 124 transfer students were admitted to TRU each academic year, with a high of 142 students in 2004/05 and a low of 102 students in 2007/08 (see Tables 1 & 2).

Table 1. Year of Admission 2003/04 through 2007/08

Region	2003/04	2004/05	2005/06	2006/07	2007/08	Grand Total
Interior/Kootenays	49	55	42	46	42	234
College of the Rockies	5	8	<5	<5	<5	23
Nicola Valley Institute of Technology	14	8	<5	9	6	41
Okanagan College	18	23	18	21	22	102
Selkirk College	12	16	16	13	11	68
Lower Mainland	29	55	64	52	41	241
BC Institute of Technology	8	7	6	<5	<5	26
Capilano College	<5	10	5	7	6	32
Columbia College	-	<5	<5	5	-	11
Coquitlam College	-	<5	8	<5	<5	14
Douglas College	<5	8	11	10	<5	36
Institute of Indigenous Government	-	-	-	<5	-	<5
Kwantlen University College	<5	9	9	10	11	43
Langara College	<5	8	14	8	7	41
University College of the Fraser Valley	6	7	6	6	8	33
Vancouver Community College	-	<5	<5	-	<5	<5
Northern BC/Yukon	28	14	13	19	10	84
College of New Caledonia	14	9	7	11	7	48
Northern Lights College	<5	<5	<5	<5	<5	12
Northwest Community College	10	<5	<5	<5	<5	21
Yukon College	<5	<5	-	<5	-	<5
Vancouver Island	15	18	10	11	9	63
Camosun College	<5	10	7	5	6	32
North Island College	<5	<5	<5	<5	<5	12
Malaspina University-College	7	<5	<5	<5	<5	19
Grand Total	121	142	129	128	102	622

The largest group of students over the five-year period (241) comes from Lower Mainland institutions, particularly Kwantlen University College (43) and Langara College (41). The Lower Mainland region is closely followed by the Interior/Kootenay region, which has contributed a total of 234 students. The largest contributing schools from the Interior/Kootenay region include Okanagan College (102 students) and Selkirk College (68 students).

³ Calculated as percentage of new students at the Kamloops campus only, 2003/04 to 2007/08.

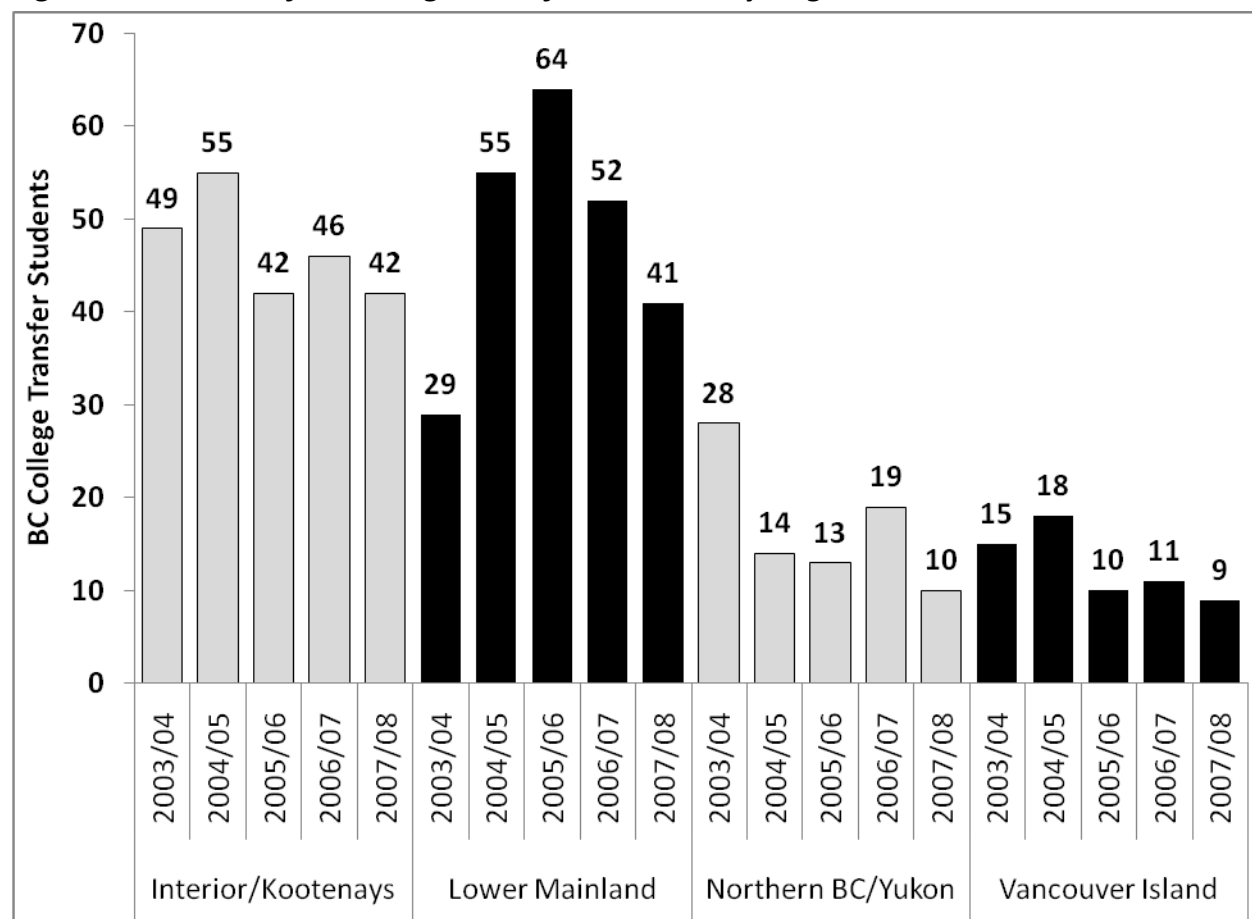
It is theorized that the recent decline in transfer students in 2007/08 was due in part to the expansion of seat capacity in Lower Mainland universities. TRU experienced a 21% drop in transfer students from these institutions from 2006/07 to 2007/08, which accounts for 40% of TRU's transfer population (followed closely by the Interior/Kootenay region, which accounts for 39% of TRU's transfers).

Table 2. Regional Distribution by Year of Admission

Region	2003/04	2004/05	2005/06	2006/07	2007/08	Grand Total
Interior/Kootenays	43%	39%	34%	36%	43%	39%
Lower Mainland	25%	40%	50%	41%	40%	40%
Northern BC/Yukon	23%	10%	10%	15%	10%	14%
Vancouver Island	9%	11%	6%	8%	8%	8%
Grand Total	100%	100%	100%	100%	100%	100%

Note: Due to rounding, totals do not necessarily add to 100%.

Figure A. Number of BC College Transfer Students by Region



The largest group of BC College Transfer students has come from the Lower Mainland and is proportionate to its larger post-secondary population. The Interior/Kootenays region, where TRU is situated, is the second largest source of BC College Transfer students (Figure A).

Figure B. Number of BC College Transfer Students by Institution, 2003/04 to 2007/08

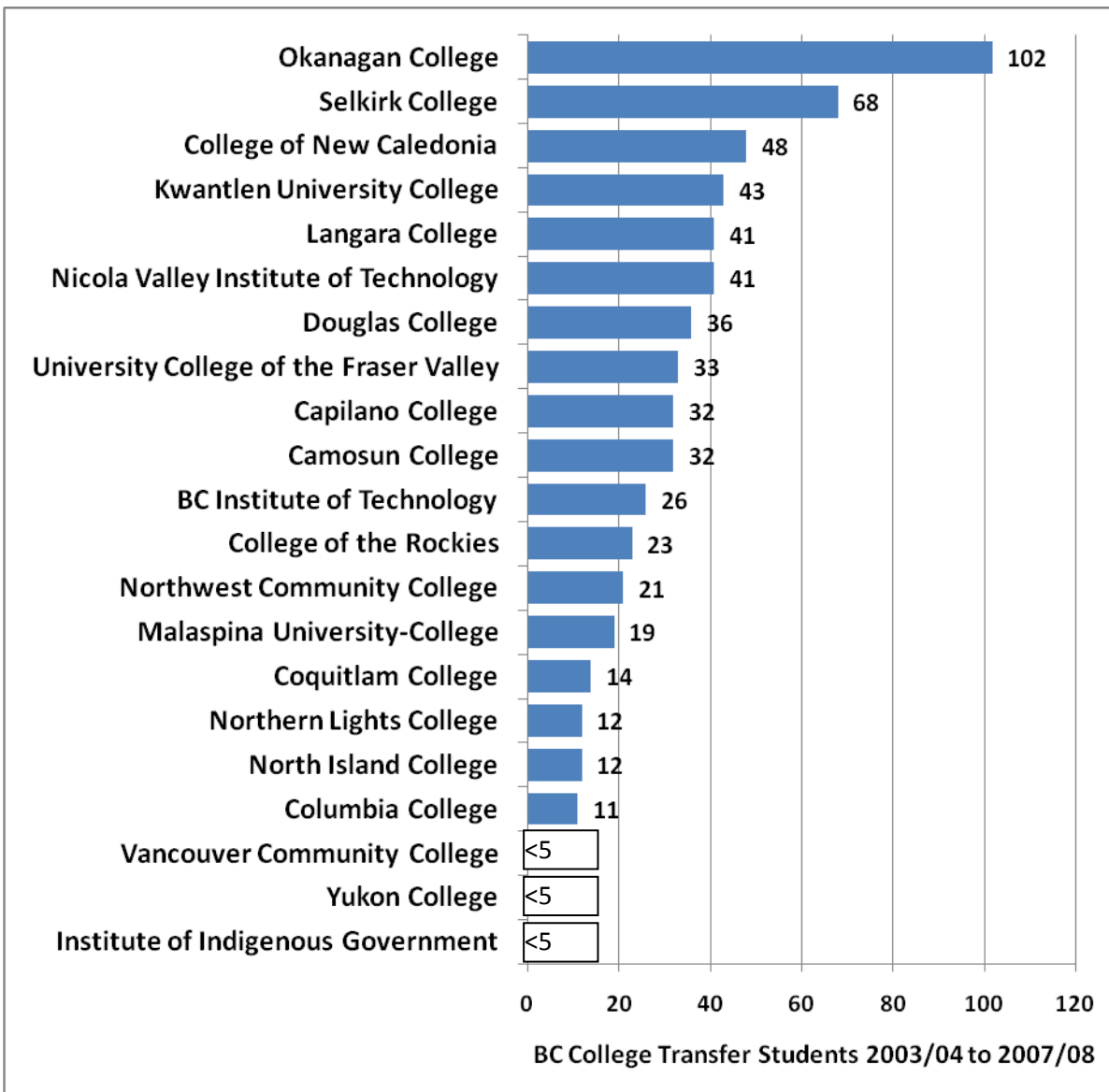


Figure B shows that the three largest contributing schools were Okanagan College (102 students), Selkirk College (68 students), and the College of New Caledonia (48 students). All three institutions are in the Interior/Kootenays and Northern BC regions.

Table 3: Transfer Credits at Admission

Region	Number of Students	Avg Credits Transferred
Interior/Kootenays	234	51
College of the Rockies	23	53
Nicola Valley Institute of Technology	41	63
Okanagan College	102	45
Selkirk College	68	52
Lower Mainland	241	49
BC Institute of Technology	26	51
Capilano College	32	52
Columbia College	11	41
Coquitlam College	14	52
Douglas College	36	52
Institute of Indigenous Government	<5	87
Kwantlen University College	43	48
Langara College	41	50
University College of the Fraser Valley	33	46
Vancouver Community College	<5	39
Northern BC/Yukon	84	45
College of New Caledonia	48	45
Northern Lights College	12	56
Northwest Community College	21	41
Yukon College	<5	37
Vancouver Island	63	51
Camosun College	32	48
North Island College	12	52
Malaspina University-College	19	54
Grand Total	622	50

As evidenced by Table 3, over the five-year period, students have transferred an average of 50 credits, or about a year and a half of full-time study credits to TRU. In the Interior/Kootenays region, Nicola Valley Institute of Technology had the highest average credit transfer with 63 credits. In the Vancouver Island region, the high of 54 credits was from Malaspina University-College. The Northern BC/Yukon region had the lowest average transfer credits per student, at 45. Yukon College (N = <5) had the lowest average credits transferred per student, at 37 credits.

Table 4: Distribution of Transfer Credits

Region	< 30	30-39	40-49	50-59	≥ 60	Grand Total
Interior/Kootenays	29	54	22	29	100	234
College of the Rockies	-	8	<5	<5	12	23
Nicola Valley Institute of Technology	-	<5	<5	9	29	41
Okanagan College	22	31	10	10	29	102
Selkirk College	7	14	8	9	30	68
Lower Mainland	35	51	35	38	82	241
BC Institute of Technology	<5	<5	<5	<5	13	26
Capilano College	<5	<5	6	7	13	32
Columbia College	<5	<5	<5	<5	<5	11
Coquitlam College	<5	<5	<5	-	<5	14
Douglas College	6	5	<5	7	14	36
Institute of Indigenous Government	-	-	-	-	<5	<5
Kwantlen University College	<5	12	5	8	14	43
Langara College	8	8	5	7	13	41
University College of the Fraser Valley	6	9	5	5	8	33
Vancouver Community College	-	<5		-	<5	<5
Northern BC/Yukon	18	17	12	18	19	84
College of New Caledonia	10	9	7	10	12	48
Northern Lights College	<5	<5	<5	<5	<5	12
Northwest Community College	5	6	<5	<5	<5	21
Yukon College	<5	<5	<5	-	-	<5
Vancouver Island	8	10	6	13	26	63
Camosun College	5	6	5	5	11	32
North Island College	<5	<5	<5	<5	6	12
Malaspina University College	<5	<5	-	6	9	19
Grand Total	90	132	75	98	227	622

Students transfer credits at disparate rates; for example, 90 students (14%) transferred less than 30 credits, whereas 227 students (36%) transferred 60 or more credits (Table 4).

Table 5: Transfer Credit Proportional Distributions

Region	2003/04	2004/05	2005/06	2006/07	2007/08	Grand Total
Interior/Kootenays	40.0%	39.7%	31.7%	40.3%	43.0%	38.8%
Lower Mainland	22.1%	40.6%	51.3%	39.2%	38.8%	38.6%
Northern BC/Yukon	23.3%	7.9%	9.0%	13.3%	8.3%	12.4%
Vancouver Island	14.6%	11.9%	8.1%	7.2%	9.9%	10.3%
Grand Total	100.0%	100.0%	100.0%	100.0%	100.0%	100.0%

Table 5 indicates that the Interior/Kootenays and Lower Mainland institutions account for 77% of all credits transferred to TRU with Northern BC/Yukon and Vancouver Island contributing the balance (12% and 10% respectively) over the five-year period. Generally speaking, the number of credits transferred proportionately matches the number of students from each institution or region. For example, the Lower Mainland has the highest population of students, and the greatest number of students transferring to TRU (241 students from 2003/04 to 2007/08) and the Interior/Kootenays region is a close second with 234 students.

Table 6: Transfer Credit Actual Distributions

Region	2003/04	2004/05	2005/06	2006/07	2007/08	Grand Total
Interior/Kootenays	2,465	2,700	2,039	2,548	2,206	11,958
Lower Mainland	1,365	2,759	3,303	2,479	1,992	11,898
Northern BC/Yukon	1,436	534	579	840	426	3,815
Vancouver Island	899	806	519	454	510	3,188
Grand Total	6,165	6,799	6,440	6,321	5,134	30,859

In regards to the actual numbers of credits transferred, there appears to have been a significant shift over the past five years in some regions (as seen in Table 6). Credits transferred by Northern BC/Yukon students, for example, have decreased from 1,436 (23% of all transfer credits) in 2003/04 to just over 426 credits (8%) in 2007/08 (the number of students transferring 60 or more credits dropped from 12 in 2003/04 to 1 in 2007/08). On the other hand, Lower Mainland students transferred greatly increasing numbers of credits for the first three years and these numbers have steadily declined for the latter two years. The increased seat capacity in Lower Mainland universities may play a factor in the changing numbers.

Credits Taken in 1st Semester at TRU

Approximately 74% of transfer students registered in a full-time course load (12 or more credits per semester) in their first semester after transferring to TRU; however, students from some institutions displayed marked departures from this pattern (Table 7). For example, students from North Island College enrolled in a full-time course load 92% of the time. As well, students from the private institutions, Columbia and Coquitlam Colleges, had a combined average of 88% of students who enrolled in full-time courses, and only 12% of students enrolled in part-time courses.

Table 7: Full-time and Part-time Distributions in 1st Semester

Region	Full-Time		Part-Time		Grand Total
	N	%	N	%	
Interior/Kootenays	165	71%	69	29%	234
College of the Rockies	15	65%	8	35%	23
Nicola Valley Institute of Technology	22	54%	19	46%	41
Okanagan College	74	73%	28	27%	102
Selkirk College	54	79%	14	21%	68
Lower Mainland	186	77%	55	23%	241
BC Institute of Technology	21	81%	5	19%	26
Capilano College	23	72%	9	28%	32
Columbia College	10	91%	<5	9%	11
Coquitlam College	12	86%	<5	14%	14
Douglas College	24	67%	12	33%	36
Institute of Indigenous Government	-	0%	<5	100%	<5
Kwantlen University College	35	81%	8	19%	43
Langara College	32	78%	9	22%	41
University College of the Fraser Valley	26	79%	7	21%	33
Vancouver Community College	<5	75%	<5	25%	<5
Northern BC/Yukon	59	70%	25	30%	84
College of New Caledonia	34	71%	14	29%	48
Northern Lights College	8	67%	<5	33%	12
Northwest Community College	14	67%	7	33%	21
Yukon College	<5	100%	-	0%	<5
Vancouver Island	49	78%	14	22%	63
Camosun College	23	72%	9	28%	32
North Island College	11	92%	<5	8%	12
Malaspina University-College	15	79%	<5	21%	19
Grand Total	459	74%	163	26%	622

Table 7 details course loads. As stated previously, a majority (74%) of BC College Transfer students take a full-time course load during their first semester at TRU. These proportions are graphed in Figure C.

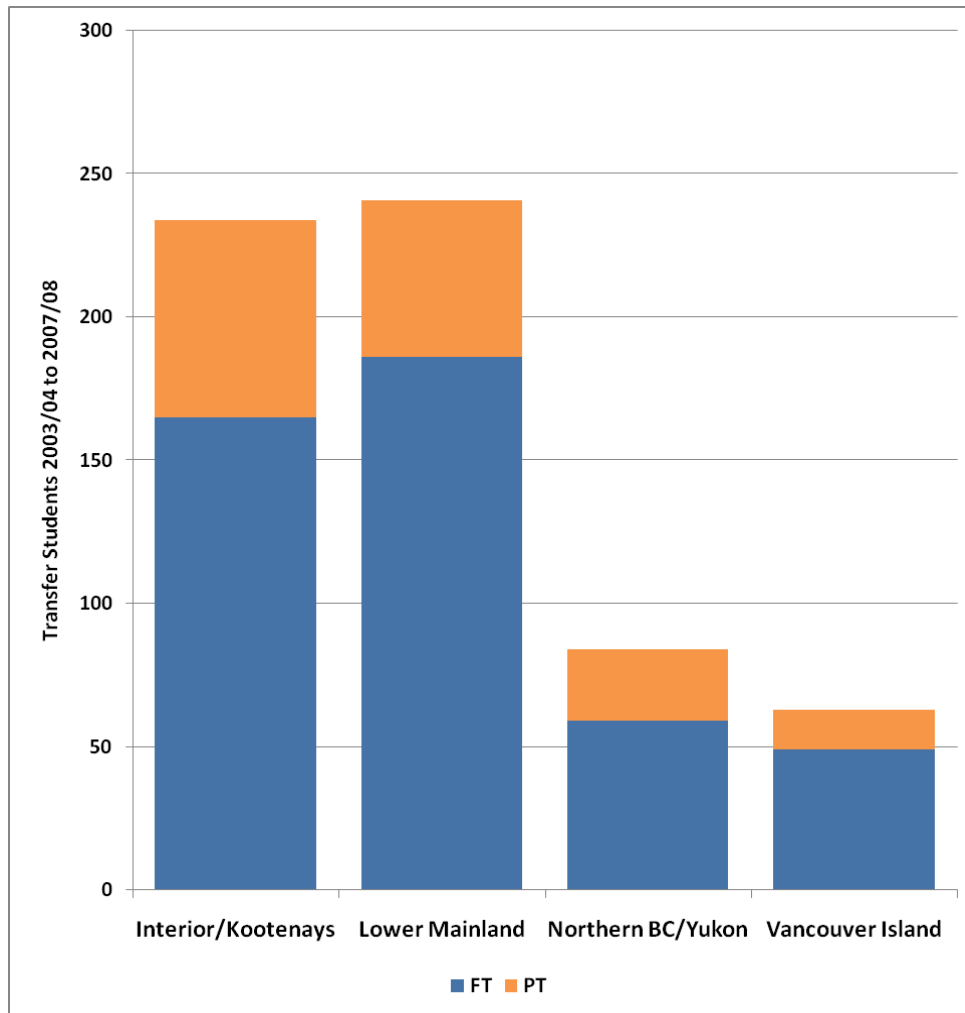
Figure C: Full-time and Part-time Proportions by Region

Table 8 indicates that BC College Transfer students take an average of 12 credits in their first semester at TRU, a full-time course load. Students from the Institute of Indigenous Government took the least first semester courses, on average, at 9 each. Students from several institutions took an average of 13 credits in the first semester.

Table 8: Mean Credits Taken in 1st Semester at TRU

Region	Number Students	Avg Credits Taken 1st Semester
Interior/Kootenays	234	12
College of the Rockies	23	11
Nicola Valley Institute of Technology	41	10
Okanagan College	102	12
Selkirk College	68	12
Lower Mainland	241	12
BC Institute of Technology	26	13
Capilano College	32	12
Columbia College	11	13
Coquitlam College	14	13
Douglas College	36	12
Institute of Indigenous Government	<5	9
Kwantlen University College	43	12
Langara College	41	12
University College of the Fraser Valley	33	12
Vancouver Community College	<5	12
Northern BC/Yukon	84	12
College of New Caledonia	48	12
Northern Lights College	12	12
Northwest Community College	21	12
Yukon College	<5	13
Vancouver Island	63	12
Camosun College	32	12
North Island College	12	13
Malaspina University-College	19	13
Grand Total	622	12

BC College Transfer Students by Faculty and Program

Overall, the largest group of transfer students enrolled in the Faculty of Arts, followed by Business & Economics, Science, and Social Work (seen in Table 9). While program choices vary by region, the largest group in each region has enrolled in the Faculty of Arts. Percentages range from 37% from the Lower Mainland to 50% from the Northern BC/Yukon region (see Table 10). With the exception of the Interior/Kootenays region, enrolment in the Faculty of Business & Economics comprises the second largest group of transfer students. The second largest group of students from the Interior/Kootenays region is enrolled in the Faculty of Science.

Table 9: BC College Transfer Students by Faculty and Region

Region	Advanced Technology & Mathematics	Arts	Business & Economics	Education	Nursing	Science	Social Work and Human Services	Student Development	Tourism	Unclassified	Grand Total
Interior/Kootenays	<5	88	24	<5	<5	51	36	-	14	11	234
College of the Rockies	-	7	<5	-	-	6	<5	-	<5	<5	23
Nicola Valley Institute of Technology	-	<5	<5	-	-	<5	27	-	-	5	41
Okanagan College	<5	52	11	<5	<5	21	<5	-	6	<5	102
Selkirk College	<5	25	8	<5	-	21	<5	-	<5	<5	68
Lower Mainland	<5	89	67	-	5	36	10	<5	20	7	241
BC Institute of Technology	-	<5	13	-	<5	7	-	-	<5	-	26
Capilano College	-	19	<5	-	-	<5	<5	-	5	-	32
Columbia College	-	-	8	-	-	<5	-	-	<5	-	11
Coquitlam College	-	<5	7	-	-	<5	-	<5	<5	<5	14
Douglas College	<5	14	8	-	-	8	<5	-	<5	<5	36
Institute of Indigenous Government	-	-	-	-	-	-	<5	-	-	-	<5
Kwantlen University College	-	22	12	-	-	6	<5	<5	-	<5	43
Langara College	<5	13	14	-	<5	<5	<5	<5	<5	<5	41
University College of the Fraser Valley	-	18	<5	-	-	<5	<5	-	5	<5	33
Vancouver Community College	-	-	-	-	<5	<5	-	-	<5	-	<5
Northern BC/Yukon	<5	42	14	<5	<5	9	8	-	<5	<5	84
College of New Caledonia	<5	22	10	-	<5	5	<5	-	<5	<5	48
Northern Lights College	-	8	-	-	-	-	<5	-	-	<5	12
Northwest Community College	<5	10	<5	<5	-	<5	<5	-	-	-	21
Yukon College	-	<5	<5	-	-	-	-	-	-	-	<5
Vancouver Island	<5	26	11	-	<5	9	7	<5	<5	<5	63
Camosun College	-	14	7	-	-	<5	<5	<5	<5	<5	32
North Island College	-	<5	<5	-	-	<5	<5	-	<5	<5	12
Malaspina University-College	<5	9	<5	-	<5	<5	<5	-	-	<5	19
Grand Total	12	245	116	<5	13	105	61	<5	37	26	622
BC High School Direct Entry	106	1468	353	18	64	914	13	71	86	<5	3,151

The largest group of BC High School Direct Entry students, 47%, was enrolled in Arts as well. BC High School Direct Entry students differ from the BC College Transfer students in that more of them (30%, as compared to 17%) were enrolled in the Faculty of Science; however, Business & Economics and Social Work were also popular choices with this group. It should be noted that students are often placed in Arts or Science programs when they are unsure of their educational goals. Students wishing to enter such faculties as Nursing, Education, and Social Work, in contrast, must compete for seats and must have a focused educational plan.

Table 10: Distribution of BC College Transfer Students by Region and Faculty

Region	Advanced Technology & Mathematics	Arts	Business & Economics	Education	Nursing	Science	Social Work and Human Services	Student Development	Tourism	Unclassified	Grand Total
Interior/Kootenays	2%	38%	10%	1%	2%	22%	15%	0%	6%	5%	100%
Lower Mainland	2%	37%	28%	0%	2%	15%	4%	1%	8%	3%	100%
Northern BC/Yukon	4%	50%	17%	1%	4%	11%	10%	0%	1%	4%	100%
Vancouver Island	2%	41%	17%	0%	2%	14%	11%	2%	3%	8%	100%
Grand Total	2%	39%	19%	0%	2%	17%	10%	1%	6%	4%	100%
BC High School	3%	47%	11%	1%	2%	30%	0%	2%	3%	0%	100%

The Faculty of Arts was the most popular division for both BC College Transfer students and BC High School Direct Entry students, as detailed in Table 10. Less common divisions were Education, Student Development, Nursing, and Advanced Technology & Mathematics for BC College Transfer students, while least common divisions for BC High School Direct Entry students included Social Work, “Unclassified”, and Education. It should be noted that, in the case of the Bachelor of Social Work and Bachelor of Education programs, students may not enter directly from high school. These students entered another program first and would have then transferred to these programs.

Table 11: Distribution of BC College Transfer Students by Faculty and Region

Region	Advanced Technology & Mathematics	Arts	Business & Economics	Education	Nursing	Science	Social Work and Human Services	Student Development	Tourism	Unclassified	Grand Total
Interior/Kootenays	33%	36%	21%	67%	31%	49%	59%	0%	38%	42%	38%
Lower Mainland	33%	36%	58%	0%	38%	34%	16%	75%	54%	27%	39%
Northern BC/Yukon	25%	17%	12%	33%	23%	9%	13%	0%	3%	12%	14%
Vancouver Island	8%	11%	9%	0%	8%	9%	11%	25%	5%	19%	10%
Grand Total	100%	100%	100%	100%	100%	100%	100%	100%	100%	100%	100%

Table 11 details that, for most faculties, the Interior/Kootenays and Lower Mainland regions contribute the greatest proportion of students, which is aligned with the total number of BC College Transfer students who come from these areas. Exceptions to this statement are the Education and Student Development faculties. The Faculty of Education received 67% of its students from the Interior/Kootenays region (N=<5), no students from the Lower Mainland, and 33% from the Northern BC/Yukon region (N=<5). As well, the Faculty of Student Development received 75% of its students from the Lower Mainland (N=<5), no students from the Interior/Kootenays, and 25% of its students from Vancouver Island (N=<5).

Age Distribution

BC College Transfer students from each region were an average age of 23 upon entrance to TRU (Table 12). Students from the Lower Mainland and Vancouver Island were the youngest groups at 23 and 24, respectively. Students from three institutions (Columbia College, Coquitlam College, and North Island College) were the youngest with an average age of 22 upon transfer to TRU. The oldest average age of BC College Transfer students was 33, from the Nicola Valley Institute of Technology.

Table 12: Average Age at Start by Region and Institution

Region	Avg Age at Start
Interior/Kootenays	26
College of the Rockies	24
Nicola Valley Institute of Technology	33
Okanagan College	25
Selkirk College	24
Lower Mainland	23
BC Institute of Technology	24
Capilano College	24
Columbia College	22
Coquitlam College	22
Douglas College	23
Institute of Indigenous Government	29
Kwantlen University College	23
Langara College	23
University College of the Fraser Valley	23
Vancouver Community College	28
Northern BC/Yukon	26
College of New Caledonia	25
Northern Lights College	28
Northwest Community College	27
Yukon College	31
Vancouver Island	24
Camosun College	24
North Island College	22
Malaspina University-College	25
Grand Total	23

Table 13: Average Age by Academic Year

Year	BC College Transfer	BC High School Direct
2003/04	22	18
2004/05	23	18
2005/06	23	18
2006/07	24	18
2007/08	23	18
Grand Total	23	18

Table 13 illustrates that the average age of BC College Transfer students by academic year was 23 years old. Variation by year is limited, with a low of 22 in 2003/04 and a high of 24 in 2006/07. However, it is more varied than the average age of BC High School Direct Entry students, which was stable at 18 from 2003/04 to 2007/08⁴.

Table 14 shows that the largest group of BC College Transfer students fits into the 20-21 age category (a total of 178 students from 2003/04 to 2007/08). Despite a central tendency to the mid-20's, the ages of BC College Transfer students are quite varied: 51 students (8%) were younger than 20 upon transfer, while 34 (5%) were 40 and older. Although the average age of a BC College Transfer Student was 23, the majority (64%) is aged 23 or younger (the median age of BC College Transfer Students was 21).

Table 14: Age Distribution by Region

Region	< 20	20 - 21	22 - 23	24 - 25	26 - 30	31 - 39	40 +	Grand Total
Interior/Kootenays	32	55	52	26	29	19	21	234
Lower Mainland	10	80	79	32	30	6	<5	241
Northern BC/Yukon	<5	24	19	13	9	7	8	84
Vancouver Island	5	19	19	8	6	5	<5	63
Grand Total	51	178	169	79	74	37	34	622

⁴ Student Transitions Project First Transitions (Grad 2001-02 thru 2005-06) Version 2008-07-02. Assume that immediate transition implies students will be only 4-8 months older upon entrance to TRU than at high school graduation.

Gender Distribution

Table 15: Gender Distribution

Region	F	M
2003/04	65%	35%
2004/05	58%	42%
2005/06	57%	43%
2006/07	63%	37%
2007/08	62%	38%
Grand Total	61%	39%

Female students comprised the majority of BC College Transfer students over the past 5 years, an average of 61% each year (Table 15).

Table 16: Gender Distribution by Region and Institution

Region	Female		Male	
	Number Students	%	Number Students	%
Interior/Kootenays	162	69%	72	31%
College of the Rockies	9	39%	14	61%
Nicola Valley Institute of Technology	32	78%	9	22%
Okanagan College	80	78%	22	22%
Selkirk College	41	60%	27	40%
Lower Mainland	143	59%	98	41%
BC Institute of Technology	14	54%	12	46%
Capilano College	21	66%	11	34%
Columbia College	6	55%	5	45%
Coquitlam College	6	43%	8	57%
Douglas College	25	69%	11	31%
Institute of Indigenous Government	<5	100%	-	0%
Kwantlen University College	27	63%	16	37%
Langara College	19	46%	22	54%
University College of the Fraser Valley	22	67%	11	33%
Vancouver Community College	<5	50%	<5	50%
Northern BC/Yukon	64	76%	20	24%
College of New Caledonia	39	81%	9	19%
Northern Lights College	9	75%	<5	25%
Northwest Community College	15	71%	6	29%
Yukon College	<5	33%	<5	67%
Vancouver Island	41	65%	22	35%
Camosun College	20	63%	12	38%
North Island College	9	75%	<5	25%
Malaspina University-College	12	63%	7	37%
Grand Total	410	66%	212	34%
BC High School Direct Entry	2761	56%	2169	44%

As observed in Table 16, the high proportion of females is fairly consistent across regions, though differences can be readily observed: some strong female majorities come from the College of New Caledonia (81%), Nicola Valley Institute of Technology (78%), and Okanagan College (78%). Male majorities exist in four institutions: Yukon College (67%), College of the Rockies (61%), Coquitlam College (57%), and Langara College (54%). A 50-50 split exists between female and male students from Vancouver Community College; however, only a small number of students transferred from this institution.

Section B: Academic Performance Indicators

The cumulative GPA of BC College Transfer students was examined at regular intervals: after the first semester, after 30 credits, and at graduation (if achieved; Ns were largest for the first semester, and decreased for 30 credits and graduation as some students entered TRU closer to the end of the study period). It is also common for universities to examine entrance GPA, but the open admission policy of Thompson Rivers does not require this information to be consistently populated in the student records system. Therefore, it is not possible to comprehensively gauge the effect of transfer on GPA – commonly known as “transfer shock” and usually manifesting as an initial drop in grades immediately after transfer.

Grade Point Average

Table 17 compares the 1st term and cumulative GPAs of BC College Transfer students and BC High School Direct Entry students. The average first semester GPA for transfer students was 2.81, and the average cumulative GPA at graduation was 3.15, an increase of .34. BC High School Direct Entry students experience an increase of 0.58 from first semester GPA to graduation GPA. However, the 1st term and cumulative GPAs for transfer students in each region are higher than the GPAs of BC High School Direct Entry students. In the majority of cases, GPA had increased from the first semester to graduation. Students from Kwantlen University College, Douglas College, and the Institute of Indigenous Government, however, experienced drops in their average GPAs from the 1st semester to the graduating semester. Of 46 students from Kwantlen University College, 14 students graduated between 2003/04 and 2007/08, with a negligible overall drop in GPA.

GPA at graduation tends to be higher than GPA after the first semester for BC College Transfer students. Average GPA per institution ranged from 2.53 (Yukon College) to 3.51 (Northern Lights College). The region with the highest overall GPA was Interior/Kootenays (3.30).

Table 17: 1st Term and Cumulative GPA Comparisons

Region	1 st Semester		Graduation	
	Number Students	Avg GPA	Number Students	Avg GPA
Interior/Kootenays	240	2.88	100	3.30
College of the Rockies	24	2.94	10	3.47
Nicola Valley Institute of Technology	41	2.78	23	3.32
Okanagan College	106	2.97	41	3.35
Selkirk College	69	2.76	26	3.16
Lower Mainland	246	2.78	91	3.00
BC Institute of Technology	28	2.69	15	3.07
Capilano College	32	2.76	10	3.29
Columbia College	11	2.43	<5	2.95
Coquitlam College	14	2.58	6	3.04
Douglas College	36	2.91	9	2.60
Institute of Indigenous Government	<5	3.33	<5	3.19
Kwantlen University College	46	2.70	14	2.69
Langara College	41	2.92	17	3.10
University College of the Fraser Valley	33	2.87	13	3.12
Vancouver Community College	<5	2.91	<5	3.29
Northern BC/Yukon	84	2.76	34	3.09
College of New Caledonia	48	2.76	18	3.07
Northern Lights College	12	3.10	5	3.51
Northwest Community College	21	2.63	9	3.04
Yukon College	<5	2.38	<5	2.53
Vancouver Island	52	2.71	18	3.13
Camosun College	33	2.74	11	3.13
Malaspina University-College	19	2.65	7	3.13
Grand Total	622	2.81	243	3.15
BC High School Direct Entry	3151	2.33	421	2.91

Selected Courses

Courses were selected based on enrolment of transfer students (a minimum of 50 BC College Transfer students enrolled per course over the past 5 years). This resulted in 23 courses being selected (Table 18). In 18 (or 78%) of these courses, BC High School Direct Entry students achieved a higher average GPA than did BC College Transfer students. Courses for which the reverse was true are highlighted.

Table 18: GPA Comparison for Selected Courses

Course	BC High School Direct Entry		BC College Transfer Students	
	Number Students	Avg GPA	Number Students	Avg GPA
BBUS_221 Financial Accounting	247	2.44	71	2.02
BBUS_254 Management Accounting	152	2.64	73	2.09
BBUS_272 Organizational Behaviour	280	2.84	68	2.72
BBUS_303 Business in Society	109	3.11	124	2.52
BBUS_312 Intro to Financial Management	84	2.86	85	2.53
BBUS_331 Operations Management	60	3.18	56	2.88
BBUS_343 Intro to Marketing	94	3.14	64	2.57
BBUS_351 International Business	79	3.30	79	2.83
BBUS_381 Intro to Human Resource Management	84	3.22	80	2.81
BBUS_393 Commercial Law	64	2.90	51	2.16
BBUS_478 Strategic Management Issues	31	3.30	64	3.08
BUEC_204 Managerial Economics	133	2.68	93	2.38
BUEC_233 Economics and Business Statistics	107	2.78	80	2.47
ECON_190 Principles of Microeconomics	559	2.35	101	2.77
ECON_195 Principles of Macroeconomics	411	2.33	85	2.24
ENGL_110 Composition	2374	2.39	106	2.63
ENGL_111 Intro to Prose Fiction	1549	2.34	70	1.98
PHIL_111 Intro to Critical Thinking	445	2.37	76	2.50
SOCW_301 Intro to Social Work Research	11	3.06	76	3.10
SOCW_306 Theory and Ideology of Social Work	11	3.12	75	3.04
SOCW_353 Social Work Practice with Individuals	11	3.24	66	3.33
SOCW_354 An Intro to First Nations Issues	11	3.91	55	3.50
SOCW_357 Social Work, Law and Social Policy	8	3.46	54	3.33
Grand Total	6914	2.48	1752	2.65

Note: An explanation of course abbreviations is provided in the appendix.

Courses in which BC College Transfer Students achieved higher marks than BC High School Direct Entry students included Principles of Microeconomics, Composition, Introduction to Critical Thinking, Introduction to Social Work Research, and Social Work Practice with Individuals. It should be noted that this chart does not display proportional comparisons. In most cases, sample sizes are very different.

Table 19 includes the same information as summarized in Table 18, but expands the BC College Transfer student information by region and institution for each course.

Table 19: GPA Comparison for Selected Courses by Institution

Region	BBUS_221		BBUS_254		BBUS_272		BBUS_303	
	N	Avg GPA	N	Avg GPA	N	Avg GPA	N	Avg GPA
Interior/Kootenays	12	2.17	16	2.27	16	3.08	21	3.14
College of the Rockies	<5	4.00	<5	3.50	<5	4.00	<5	3.09
Nicola Valley Institute of Technology	<5	2.00	<5	2.00	<5	0.00	<5	2.67
Okanagan College	6	1.83	6	1.78	11	3.27	8	3.50
Selkirk College	<5	2.33	7	2.38	<5	3.11	8	2.88
Lower Mainland	43	2.01	45	2.19	40	2.70	79	2.37
BC Institute of Technology	8	1.88	7	2.43	<5	2.11	18	2.24
Capilano College	<5	2.00	<5	2.00	<5	3.00	<5	3.17
Columbia College	6	1.45	5	1.53	<5	1.84	5	2.20
Coquitlam College	6	1.95	6	1.83	7	2.71	7	2.47
Douglas College	5	1.93	10	2.10	6	3.22	12	2.33
Institute of Indigenous Government	-	-	-	-	-	-	-	-
Kwantlen University College	<5	2.17	7	2.38	5	2.74	20	2.20
Langara College	14	2.26	7	2.57	13	2.82	12	2.70
University College of the Fraser Valley	<5	3.33	<5	2.50	<5	2.11	<5	1.67
Vancouver Community College	-	-	-	-	-	-	-	-
Northern BC/Yukon	6	1.56	5	1.47	<5	1.00	15	2.33
College of New Caledonia	<5	1.44	<5	2.00	<5	1.17	9	2.96
Northern Lights College	-	-	-	-	-	-	<5	1.67
Northwest Community College	<5	1.17	<5	0.84	<5	0.84	<5	0.78
Yukon College	<5	2.67	<5	1.67	-	-	<5	2.17
Vancouver Island	10	2.20	7	1.52	8	2.92	9	2.74
Camosun College	6	2.28	5	1.20	<5	2.42	<5	2.25
North Island College	<5	1.34	<5	2.33	<5	3.34	<5	3.17
Malaspina University-College	<5	2.84	-	-	<5	3.67	<5	3.00
Grand Total	71	2.02	73	2.09	68	2.72	124	2.52
B.C. High School Direct Entry	247	2.44	152	2.64	280	2.84	109	3.11

Region	BBUS_312		BBUS_331		BBUS_343		BBUS_351	
	N	Avg GPA	N	Avg GPA	N	Avg GPA	N	Avg GPA
Interior/Kootenays	17	3.08	14	3.12	11	3.03	18	3.30
College of the Rockies	<5	3.00	<5	3.34	<5	2.84	<5	3.50
Nicola Valley Institute of Technology	-	-	-	-	-	-	<5	2.00
Okanagan College	7	3.62	7	3.38	<5	3.54	8	3.71
Selkirk College	7	2.57	5	2.67	<5	2.50	7	2.95
Lower Mainland	52	2.41	31	2.89	44	2.54	48	2.58
BC Institute of Technology	8	3.00	<5	2.83	<5	2.45	8	2.33
Capilano College	<5	2.67	<5	3.00	<5	3.22	-	-
Columbia College	5	2.27	<5	2.33	6	2.22	5	2.20
Coquitlam College	7	2.52	8	3.13	11	2.48	7	2.48
Douglas College	9	2.48	7	2.76	<5	2.67	7	3.29
Institute of Indigenous Government	-	-	-	-	-	-	-	-
Kwantlen University College	<5	1.84	<5	2.50	6	2.33	13	2.48
Langara College	13	2.28	8	3.08	10	2.77	6	2.44
University College of the Fraser Valley	<5	1.78	-	-	<5	2.00	<5	3.34
Vancouver Community College	<5	2.33	-	-	-	-	-	-
Northern BC/Yukon	11	2.45	8	2.34	<5	1.50	7	3.19
College of New Caledonia	8	2.38	6	2.34	<5	3.00	6	3.34
Northern Lights College	-	-	-	-	<5	0.00	-	-
Northwest Community College	<5	2.00	<5	1.67	-	-	-	-
Yukon College	<5	4.00	<5	3.00	-	-	<5	2.33
Vancouver Island	5	2.00	<5	3.11	7	2.33	6	3.06
Camosun College	<5	1.56	<5	2.84	<5	2.00	<5	2.75
North Island College	<5	2.67	<5	3.67	<5	2.67	<5	3.67
Malaspina University-College	-	-	-	-	<5	2.50	-	-
Grand Total	85	2.53	56	2.88	64	2.57	79	2.83
B.C. High School Direct Entry	84	2.86	60	3.18	94	3.14	79	3.30

Region	BBUS_381		BBUS_393		BBUS_478		BUEC_204	
	N	Avg GPA	N	Avg GPA	N	Avg GPA	N	Avg GPA
Interior/Kootenays	17	3.02	10	2.73	11	3.21	20	2.72
College of the Rockies	<5	3.11	<5	3.11	<5	4.00	<5	3.56
Nicola Valley Institute of Technology	-	-	-	-	-	-	-	-
Okanagan College	9	3.33	<5	3.33	5	3.20	10	2.87
Selkirk College	5	2.40	<5	2.00	5	3.07	7	2.14
Lower Mainland	51	2.68	35	2.01	39	3.08	61	2.26
BC Institute of Technology	13	2.46	7	1.38	14	3.12	17	2.41
Capilano College	<5	3.67	<5	4.00	<5	3.33	<5	3.33
Columbia College	5	2.27	5	1.27	<5	2.92	8	2.04
Coquitlam College	7	2.62	5	2.00	<5	3.22	5	1.53
Douglas College	6	2.89	7	2.86	5	3.20	11	2.09
Institute of Indigenous Government	-	-	-	-	-	-	-	-
Kwantlen University College	<5	3.00	<5	1.75	<5	3.33	7	1.95
Langara College	12	2.75	<5	1.67	7	2.86	10	2.83
University College of the Fraser Valley	<5	1.67	<5	2.17	<5	2.33	<5	2.34
Vancouver Community College	-	-	-	-	-	-	-	-
Northern BC/Yukon	7	3.33	<5	1.67	9	2.89	8	2.50
College of New Caledonia	6	3.33	<5	1.67	7	3.14	6	2.67
Northern Lights College	<5	3.33	-	-	-	-	-	-
Northwest Community College	-	-	-	-	<5	1.67	<5	1.67
Yukon College	-	-	-	-	<5	2.33	<5	2.33
Vancouver Island	5	2.73	<5	2.25	5	3.13	<5	2.17
Camosun College	<5	2.89	<5	2.22	<5	3.00	<5	2.17
North Island College	<5	2.50	<5	2.33	<5	3.33	<5	2.17
Malaspina University-College	-	-	-	-	-	-	-	-
Grand Total	80	2.81	51	2.16	64	3.08	93	2.38
B.C. High School Direct Entry	84	3.22	64	2.90	31	3.30	133	2.68

Region	BUEC_233		ECON_190		ECON_195		ENGL_110	
	N	Avg GPA	N	Avg GPA	N	Avg GPA	N	Avg GPA
Interior/Kootenays	19	3.02	31	3.01	14	2.31	25	2.97
College of the Rockies	<5	3.89	<5	1.67	<5	1.84	<5	3.33
Nicola Valley Institute of Technology	-	-	<5	2.00	<5	1.67	<5	3.44
Okanagan College	10	2.83	14	3.02	6	2.33	10	2.60
Selkirk College	6	2.89	13	3.36	5	2.60	11	3.15
Lower Mainland	45	2.19	51	2.66	53	2.27	58	2.58
BC Institute of Technology	12	2.30	9	3.04	5	2.13	24	2.57
Capilano College	<5	3.33	5	2.60	<5	2.50	<5	4.00
Columbia College	<5	2.11	<5	2.50	<5	2.50	-	-
Coquitlam College	<5	0.00	<5	3.00	<5	2.34	<5	2.78
Douglas College	10	2.10	7	2.33	6	1.89	6	2.94
Institute of Indigenous Government	-	-	-	-	-	-	-	-
Kwantlen University College	5	2.47	14	3.07	17	2.24	8	2.50
Langara College	10	2.30	10	2.40	11	2.43	9	1.85
University College of the Fraser Valley	<5	2.50	<5	3.00	<5	2.50	<5	2.73
Vancouver Community College	-	-	<5	0.50	<5	2.17	<5	3.67
Northern BC/Yukon	11	2.64	8	2.96	<5	2.00	17	2.47
College of New Caledonia	8	3.04	5	3.20	<5	2.00	11	2.94
Northern Lights College	-	-	-	-	-	-	<5	0.00
Northwest Community College	<5	2.00	<5	2.56	-	-	<5	2.22
Yukon College	<5	1.34	-	-	-	-	<5	1.50
Vancouver Island	5	2.60	11	2.43	14	2.14	6	2.06
Camosun College	<5	2.11	9	2.22	13	1.97	<5	1.58
North Island College	<5	4.00	<5	3.67	-	-	-	-
Malaspina University-College	<5	2.67	<5	3.00	<5	4.33	<5	3.00
Grand Total	80	2.47	101	2.77	85	2.24	106	2.63
B.C. High School Direct Entry	107	2.78	559	2.35	411	2.33	2374	2.39

Region	ENGL_111		PHIL_111		SOCW_301		SOCW_306	
	N	Avg GPA	N	Avg GPA	N	Avg GPA	N	Avg GPA
	Interior/Kootenays	13	2.31	17	2.31	42	3.14	42
College of the Rockies	<5	2.67	<5	3.67	<5	3.22	<5	3.00
Nicola Valley Institute of Technology	<5	1.50	<5	1.89	29	3.37	30	2.93
Okanagan College	10	2.43	8	2.88	<5	3.67	<5	3.33
Selkirk College	-	-	5	1.40	6	1.61	5	2.27
Lower Mainland	35	1.95	46	2.67	11	3.15	11	3.24
BC Institute of Technology	<5	1.50	15	2.69	-	-	-	-
Capilano College	-	-	<5	3.00	<5	3.34	<5	3.67
Columbia College	-	-	<5	2.42	-	-	-	-
Coquitlam College	<5	1.56	5	3.20	-	-	-	-
Douglas College	6	1.89	-	-	<5	2.34	<5	3.34
Institute of Indigenous Government	-	-	-	-	<5	2.67	<5	2.00
Kwantlen University College	9	2.15	6	2.61	<5	3.33	<5	2.00
Langara College	6	1.17	10	2.77	<5	3.17	<5	3.33
University College of the Fraser Valley	7	2.43	5	2.07	<5	3.67	<5	3.67
Vancouver Community College	<5	3.00	-	-	-	-	-	-
Northern BC/Yukon	13	1.95	10	1.97	11	2.97	10	3.17
College of New Caledonia	5	1.93	6	2.39	5	3.34	5	3.13
Northern Lights College	<5	1.78	-	-	<5	3.42	<5	3.08
Northwest Community College	5	2.07	<5	1.11	<5	1.17	<5	3.67
Yukon College	-	-	<5	2.00	-	-	-	-
Vancouver Island	9	1.67	<5	2.78	12	3.06	12	3.28
Camosun College	5	2.20	<5	2.00	7	3.19	7	3.33
North Island College	-	-	-	-	<5	3.56	<5	3.33
Malaspina University-College	<5	1.00	<5	3.17	<5	1.84	<5	3.00
Grand Total	70	1.98	76	2.50	76	3.10	75	3.04
B.C. High School Direct Entry	1549	2.34	445	2.37	11	3.06	11	3.12

Region	SOCW_353		SOCW_354		SOCW_357		Total N	Total Avg GPA
	N	Avg GPA	N	Avg GPA	N	Avg GPA		
Interior/Kootenays	36	3.17	25	3.41	26	3.36	473	2.96
College of the Rockies	<5	3.33	<5	3.45	<5	3.00	52	3.18
Nicola Valley Institute of Technology	26	3.12	15	3.36	18	3.43	135	3.07
Okanagan College	<5	3.42	<5	3.78	<5	3.67	161	3.04
Selkirk College	<5	3.11	<5	3.33	<5	2.84	125	2.67
Lower Mainland	10	3.33	10	3.83	9	3.26	907	2.49
BC Institute of Technology	-	-	-	-	-	-	175	2.46
Capilano College	<5	3.33	<5	3.67	<5	3.34	42	3.18
Columbia College	-	-	-	-	-	-	72	2.09
Coquitlam College	-	-	-	-	-	-	97	2.41
Douglas College	<5	3.34	<5	4.00	<5	3.00	134	2.53
Institute of Indigenous Government	<5	3.33	<5	4.33	-	-	4	3.08
Kwantlen University College	<5	3.33	<5	3.00	<5	3.00	141	2.43
Langara College	<5	3.50	<5	4.17	<5	3.34	181	2.55
University College of the Fraser Valley	<5	3.17	<5	3.67	<5	3.50	53	2.64
Vancouver Community College	-	-	-	-	-	-	8	2.17
Northern BC/Yukon	8	3.46	8	3.29	8	3.25	192	2.56
College of New Caledonia	5	3.67	<5	3.11	<5	3.25	119	2.79
Northern Lights College	<5	3.33	<5	3.42	<5	3.34	24	2.78
Northwest Community College	<5	2.67	<5	3.33	<5	3.00	35	1.77
Yukon College	-	-	-	-	-	-	14	2.17
Vancouver Island	12	3.72	12	3.56	11	3.39	180	2.71
Camosun College	7	3.81	7	3.57	7	3.10	112	2.54
North Island College	<5	3.78	<5	3.45	<5	3.89	42	3.14
Malaspina University-College	<5	3.34	<5	3.67	<5	4.00	26	2.74
Grand Total	66	3.33	55	3.50	54	3.33	1752	2.65
B.C. High School Direct Entry	11	3.24	11	3.91	8	3.46	6914	2.48

Table 20 compares the average grade and proportion of grades below “C” in 200- and 300- level courses between BC College Transfer students and BC High School Direct Entry students. The table only includes courses that had 15 or more BC College Transfer students enrolled over the past five years (resulting in a selection of 124 courses). On average, BC College Transfer students achieved a slightly lower grade point value than their BC high school counterparts, a difference of 0.10. The two groups had an equal percentage of grades that were lower than C: 16% of grades awarded to these students in 200- and 300- level courses were lower than 2.00 in each case.

Table 20: GPA Comparison for Selected 200 and 300 Level Courses

Course	BC College Transfer			Direct Entry		
	Number Students	Avg GPA	% Grades <C	Number Students	Avg GPA	% Grades <C
BBUS_303	128	2.54	12%	109	3.11	4%
BU EC_204	96	2.43	20%	133	2.68	18%
BBUS_312	88	2.58	22%	84	2.86	15%
BU EC_233	82	2.52	21%	107	2.78	19%
BBUS_381	82	2.81	10%	84	3.22	6%
BBUS_351	81	2.86	7%	79	3.30	1%
SOCW_301	76	3.10	9%	-	-	-
SOCW_306	75	3.04	4%	11	3.12	0%
BBUS_221	74	2.08	35%	247	2.44	30%
BBUS_254	74	2.12	34%	152	2.64	20%
BBUS_272	73	2.73	11%	280	2.84	17%
BBUS_343	66	2.59	88%	94	3.14	5%
SOCW_353	66	3.33	3%	11	3.24	0%
BBUS_331	58	2.91	12%	60	3.18	5%
SOCW_354	55	3.50	2%	11	3.91	0%
SOCW_357	54	3.33	2%	8	3.46	0%
BBUS_393	53	2.17	40%	64	2.90	14%
ENGL_229	52	2.85	10%	157	3.08	5%
SOCW_307	46	3.63	0%	<5	3.67	0%
BBUS_238	45	2.77	22%	91	3.10	11%
BU EC_232	44	2.11	36%	127	2.85	16%
GEOG_390	42	3.05	5%	59	2.95	8%
PSYC_210	39	2.29	23%	100	2.63	16%
PSYC_230	37	2.56	14%	87	2.60	9%
JOUR_320	35	2.73	40%	13	3.00	0%
SOCW_376	35	3.62	14%	<5	3.83	0%
BIOL_303	34	2.97	6%	59	2.95	10%
JOUR_331	34	2.88	3%	17	2.78	6%

Course	BC College Transfer			Direct Entry		
	Number Students	Avg GPA	% Grades <C	Number Students	Avg GPA	% Grades <C
ENGL_318	33	2.71	6%	47	2.88	2%
PSYC_211	31	2.31	29%	93	2.40	26%
BBUS_320	30	1.63	53%	35	2.70	23%
BBUS_348	30	3.01	0%	18	3.57	0%
SOCW_302	29	3.61	0%	-	-	-
TMGT_301	29	2.75	17%	10	2.70	20%
TMGT_302	28	2.84	21%	10	2.13	40%
TMGT_305	27	2.77	15%	12	2.25	25%
GEOG_222	26	3.06	12%	92	2.41	22%
BBUS_315	26	2.90	8%	38	2.96	11%
NRSC_311	26	3.37	0%	16	3.13	6%
SOCW_359	26	3.70	4%	<5	4.00	0%
JOUR_305	25	2.69	4%	13	2.92	8%
JOUR_311	25	2.95	0%	12	3.22	0%
JOUR_350	25	3.07	4%	11	3.18	0%
NRSC_317	25	2.88	4%	19	2.95	21%
TMGT_261	24	2.83	13%	32	2.74	19%
CHEM_212	23	1.97	39%	190	2.56	100%
HIST_300	23	2.38	17%	18	2.59	11%
BIOL_210	22	2.41	14%	122	2.96	11%
NRSC_326	22	3.36	0%	13	2.90	0%
SOCW_355	22	3.26	0%	8	3.21	0%
SOCW_358	22	3.44	0%	<5	3.84	0%
GEOG_223	21	2.78	10%	57	2.62	11%
HIST_226	21	2.14	38%	50	2.27	22%
BIOL_300	21	3.03	10%	85	3.08	9%
ECON_371	21	2.76	29%	8	2.88	38%
GEOG_328	21	3.30	0%	22	3.38	5%
PSYC_300	21	2.41	29%	29	2.52	14%
SOCW_311	21	3.06	10%	-	-	-
TMGT_304	21	3.21	10%	7	3.00	14%
ANTH_216	20	1.53	40%	84	1.79	44%
BBUS_325	20	2.42	45%	21	2.57	24%
ENGL_308	20	3.10	0%	19	2.95	0%
NRSC_300	20	3.05	5%	15	3.25	0%
PSYC_302	20	1.10	55%	18	2.07	22%
PSYC_314	20	1.57	60%	16	2.58	19%
ENGL_211	19	1.98	26%	15	2.87	7%
PSYC_213	19	2.18	0%	60	2.04	43%

Course	BC College Transfer			Direct Entry		
	Number Students	Avg GPA	% Grades <C	Number Students	Avg GPA	% Grades <C
GEOG_327	19	3.21	89%	25	2.98	4%
BIOL_234	18	3.39	0%	142	3.33	4%
SOCW_200B	18	3.33	0%	41	2.72	17%
BBUS_321	18	2.24	33%	27	3.02	11%
BBUS_336	18	2.32	44%	-	-	-
BBUS_346	18	3.34	0%	-	-	-
EDEF_310	18	3.56	0%	7	3.95	0%
EDEF_320	18	3.43	0%	7	3.43	0%
EDLL_310	18	3.61	0%	7	3.76	0%
EDLL_320	18	3.87	0%	7	3.76	0%
EDMA_310	18	3.72	0%	7	4.05	0%
EDMA_320	18	4.02	0%	7	4.19	0%
EDPE_310	18	3.95	0%	7	3.81	0%
EDPY_310	18	3.32	0%	7	3.43	0%
EDSC_320	18	3.93	0%	7	3.90	0%
EDSO_320	18	3.94	0%	7	4.00	0%
EDTL_310	18	3.44	0%	7	3.90	0%
EDTL_320	18	3.81	0%	7	3.57	0%
ENGL_384	18	2.70	11%	6	2.78	0%
HIST_331	18	3.02	0%	13	3.20	0%
ENGL_221	17	2.06	29%	82	2.48	0%
HLSC_259	17	2.92	12%	78	2.98	8%
NURS_226	17	3.39	0%	75	3.37	0%
NURS_229	17	3.47	0%	75	3.26	1%
PSYC_216	17	2.59	12%	78	2.41	24%
PSYC_223	17	2.53	6%	46	2.19	39%
SOCI_201	17	2.04	29%	35	2.24	23%
TMGT_225	17	3.02	12%	55	2.32	20%
BBUS_322	17	1.88	41%	24	2.35	25%
BBUS_323	17	2.20	53%	18	2.61	11%
BBUS_329	17	2.61	18%	-	-	-
BBUS_347	17	1.96	65%	26	2.67	19%
ECON_310	17	1.90	53%	<5	2.56	33%
SOCI_316	17	2.22	53%	17	2.43	6%
SOCW_310	17	3.23	0%	-	-	-
BIOL_220	16	2.83	0%	101	2.94	7%
PHIL_231	16	3.38	0%	78	2.81	4%
PSYC_212	16	1.88	31%	69	2.20	30%
PSYC_319	16	3.06	6%	26	2.51	19%

Course	BC College Transfer			Direct Entry		
	Number Students	Avg GPA	% Grades <C	Number Students	Avg GPA	% Grades <C
ANTH_260	15	2.84	0%	35	2.78	14%
HIST_218	15	2.58	27%	65	2.34	28%
HLSC_269	15	2.98	7%	74	3.00	0%
NURS_219	15	3.20	0%	75	3.02	0%
SOCW_200A	15	2.89	0%	42	3.02	7%
BBUS_314	15	3.34	7%	18	3.37	6%
HIST_305	15	2.98	0%	9	3.37	11%
HIST_330	15	3.24	0%	14	3.14	7%
HIST_352	15	2.07	33%	12	2.86	8%
HLSC_359	15	3.18	0%	48	3.25	0%
JOUR_310	15	2.87	13%	<5	1.50	50%
NRSC_321	15	3.62	0%	<5	3.56	0%
NURS_317	15	3.64	0%	47	3.75	0%
NURS_319	15	3.33	0%	48	3.43	0%
NURS_350	15	3.31	0%	48	3.18	0%
PSYC_320	15	2.36	27%	18	2.52	11%
Grand Total	3617	2.87	16%	5402	2.97	16%

The progression of GPA throughout the educational experience is mapped in the following tables and figures (Table 21, Figure D, Figure E). Table 21 summarizes average GPA after 1 term, after 15 credit hours, and after 30 credit hours, and compares BC College Transfer Students to BC High School Direct Entry students. In general, BC College Transfer students achieved a higher GPA than BC High School Direct Entry students at each point. However, BC High School Direct Entry students displayed more improvement from the first term to 30 credit hours, increasing average GPA by .26 as compared to .02 for BC College Transfer students, possibly as a result of recovery from high school to college transition shock.

Table 21: GPA Progression Comparison by Year and Region

Region	Number Students	Avg GPA First Term	Number Students	Avg GPA 15 Credit Hours	Number Students	Avg GPA 30 Credit Hours
Interior/Kootenays	208	2.86	193	2.92	161	2.94
Lower Mainland	201	2.82	185	2.77	147	2.79
Northern BC/Yukon	74	2.71	63	2.69	54	2.71
Vancouver Island	51	2.67	47	2.71	41	2.68
Grand Total	534	2.81	488	2.81	403	2.83
BC High School Direct Entry	3151	2.33	2678	2.42	1796	2.59

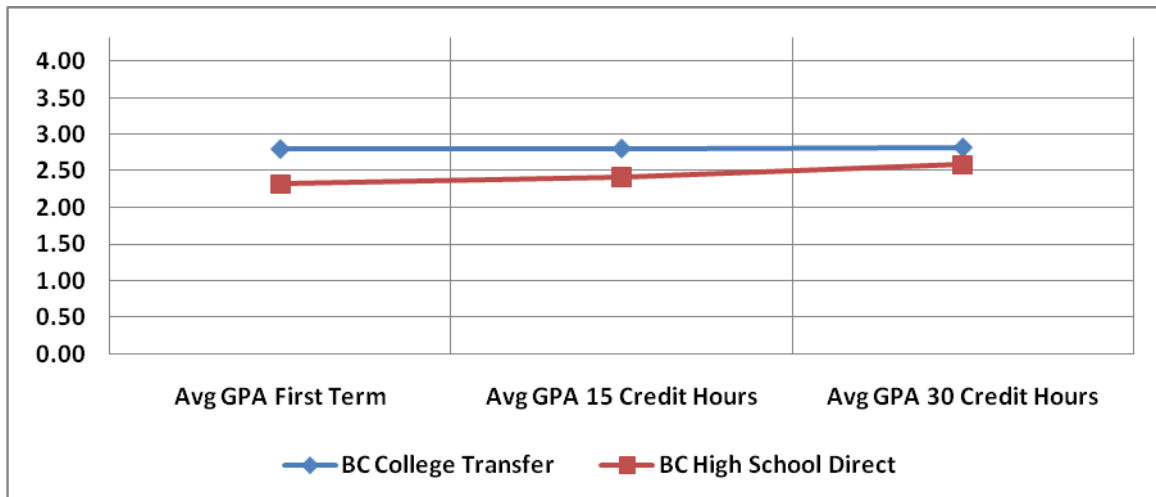
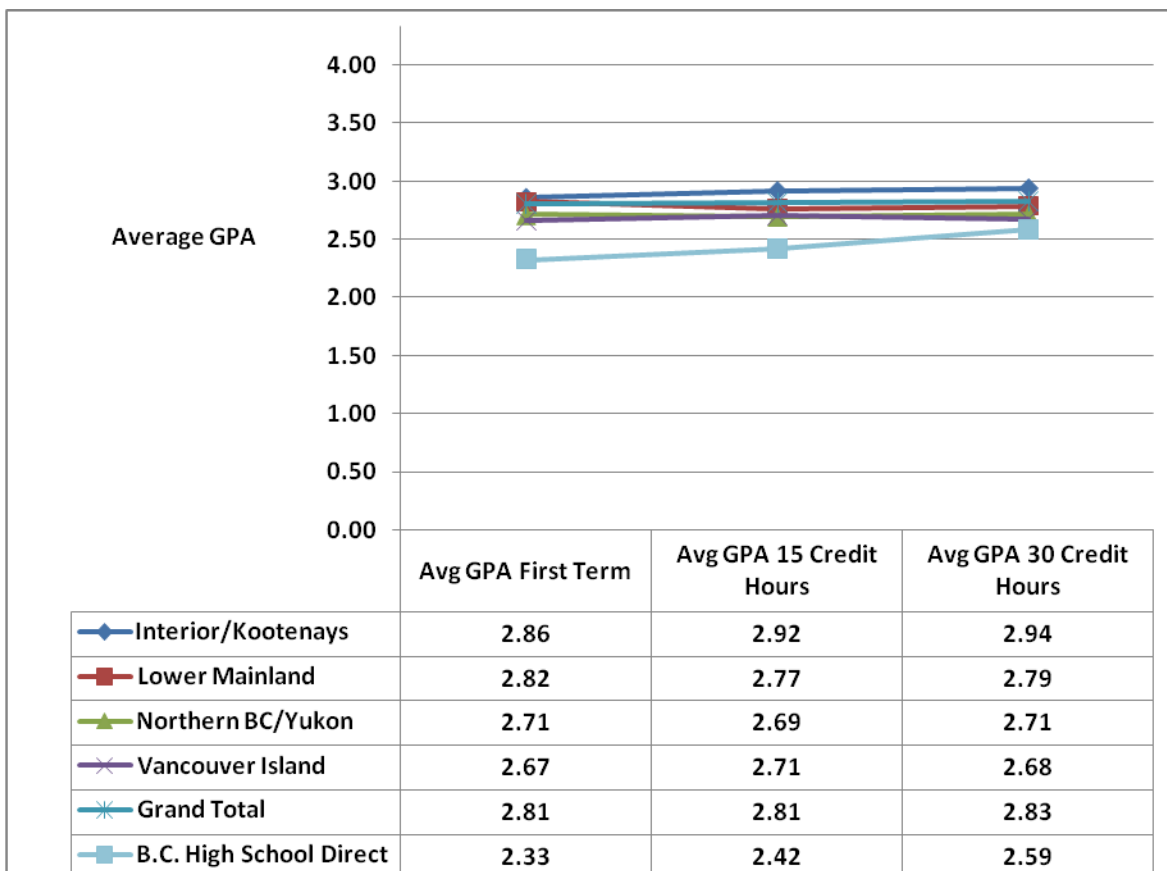
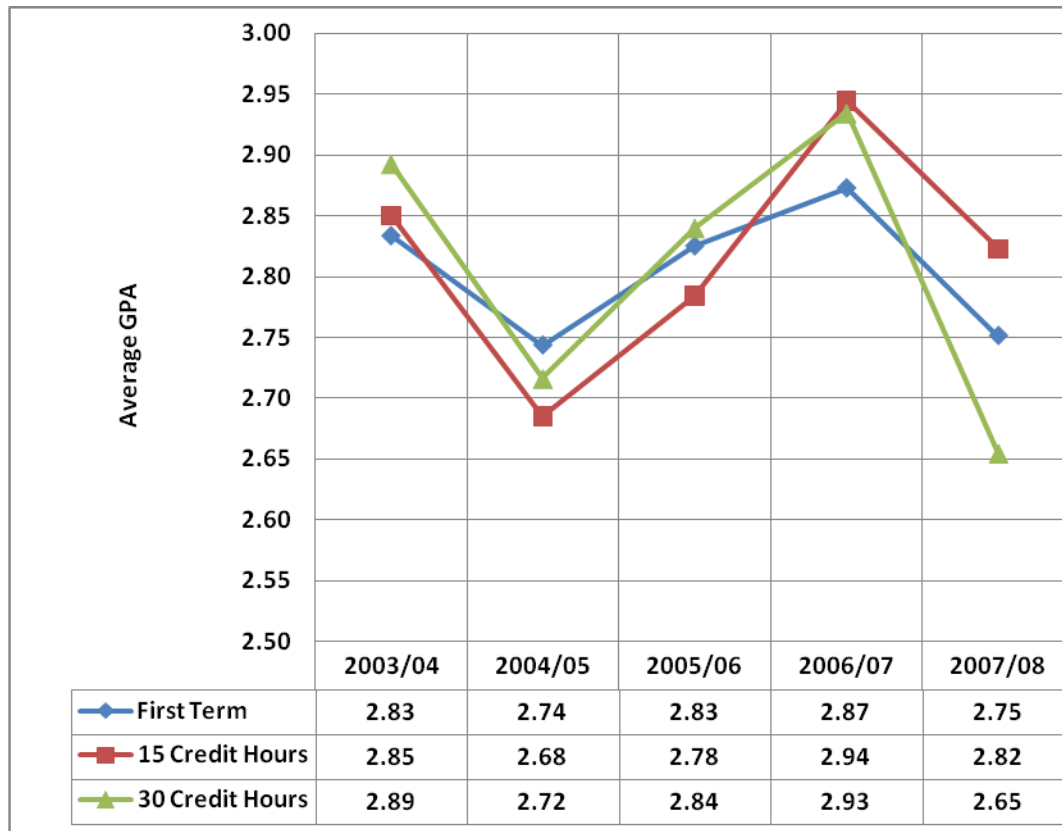
Figure D: GPA Progression Comparison

Figure E: Academic Performance of BC College Transfer Students by Region

As indicated by Figure E, BC College Transfer students from the Interior /Kootenays region achieve higher GPAs than other BC College Transfer students. This group is followed by the Lower Mainland, Northern BC /Yukon, and Vancouver Island regions. In each case, BC College Transfer students achieve a higher resultant GPA at 30 credit hours than do BC High School Direct Entry students.

The GPA values for BC College Transfer students tend to be fairly stable, with a range of 0.02 overall (Grand Total). BC High School Direct Entry students experience a greater difference in their first term GPA and subsequent GPAs, and this difference can be attributed to the transition from high school to post-secondary education that these students go through in their first semester at TRU. The transition from secondary to post-secondary education is often marked with a decrease in average GPA as these students adjust to new educational expectations and often new living arrangements.

Figure F: Academic Performance of BC College Transfer Students

When mapped according to academic year, it becomes apparent that GPAs for each step in the chronological progression are lowest in 2004/05 and peak in 2006/07 (Figure F). As well, the order of GPAs achieved is not consistent across years. For example, in Table 21B, GPAs in 2003/04 follow a logical progression of lowest GPA: first term, then after 15 credit hours, then after 30 credit hours (logical in the sense that it is generally assumed that GPA rises each year as the student gains experience and academic ability). However, this order is shuffled in 2004/05 (Table 21C), again in 2005/06 (Table 21D), and is inverted in 2006/07 (Table 21E). The numbers of BC College Transfer students entering TRU varies each year; however, the distribution of students by region remains generally the same from 2004/05 to 2007/08 (for details of 2007/08 see Table 21F).

Table 21B: GPA Progression Comparison 2003/04

Region	Number Students	Avg GPA First Term	Number Students	Avg GPA 15 Credit Hours	Number Students	Avg GPA 30 Credit Hours
Interior/Kootenays	44	2.79	40	2.84	38	2.83
Lower Mainland	25	2.84	24	2.77	21	2.84
Northern BC/Yukon	23	2.93	21	2.94	19	3.07
Vancouver Island	12	2.79	11	2.90	11	2.89
Grand Total	104	2.83	96	2.85	89	2.89
BC High School Direct Entry	904	2.30	784	2.41	609	2.58

Table 21C: GPA Progression Comparison 2004/05

Region	Number Students	Avg GPA First Term	Number Students	Avg GPA 15 Credit Hours	Number Students	Avg GPA 30 Credit Hours
Interior/Kootenays	51	2.77	48	2.76	44	2.79
Lower Mainland	50	2.93	47	2.82	40	2.91
Northern BC/Yukon	11	2.28	9	2.14	9	2.16
Vancouver Island	15	2.38	15	2.36	13	2.24
Grand Total	127	2.74	119	2.68	106	2.72
BC High School Direct Entry	733	2.38	652	2.42	514	2.54

Table 21D: GPA Progression Comparison 2005/06

Region	Number Students	Avg GPA First Term	Number Students	Avg GPA 15 Credit Hours	Number Students	Avg GPA 30 Credit Hours
Interior/Kootenays	37	2.88	34	2.92	29	2.98
Lower Mainland	50	2.84	50	2.72	44	2.75
Northern BC/Yukon	13	2.46	9	2.39	7	2.63
Vancouver Island	9	3.03	9	3.04	8	3.03
Grand Total	109	2.83	102	2.78	88	2.84
BC High School Direct Entry	55	2.43	47	2.50	40	2.65

Table 21E: GPA Progression Comparison 2006/07

Region	Number Students	Avg GPA First Term	Number Students	Avg GPA 15 Credit Hours	Number Students	Avg GPA 30 Credit Hours
Interior/Kootenays	40	3.11	39	3.19	36	3.24
Lower Mainland	43	2.76	39	2.82	33	2.75
Northern BC/Yukon	18	2.75	16	2.71	16	2.70
Vancouver Island	10	2.62	8	2.79	6	2.73
Grand Total	111	2.87	102	2.94	91	2.93
BC High School Direct Entry	759	2.26	629	2.37	449	2.56

Table 21F: GPA Progression Comparison 2007/08

Region	Number Students	Avg GPA First Term	Number Students	Avg GPA 15 Credit Hours	Number Students	Avg GPA 30 Credit Hours
Interior/Kootenays	36	2.75	32	2.92	14	2.82
Lower Mainland	33	2.71	25	2.68	9	2.46
Northern BC/Yukon	9	2.95	8	3.00	<5	2.34
Vancouver Island	5	2.67	<5	2.60	<5	2.76
Grand Total	83	2.75	69	2.82	29	2.65
BC High School Direct Entry	700	2.36	566	2.47	184	2.78

Section C: Graduates

Degree Completion Rate

Table 22 records the degree completion rates for BC College Transfer students who entered TRU from 2003/04 to 2005/06⁵. Of these students, 214 (or 55%) achieved degrees between 2003/04 and 2007/08.

Table 22: Overall Graduation Rate by Entry Year

Year	Entered	Graduated	Grad Rate
2003/04	119	82	69%
2004/05	143	78	55%
2005/06	130	54	42%
Grand Total	392	214	55%

Table 23: Overall Graduation Rate by Entry Year and Credits Transferred

Year	< 30			30-39			40-49		
	Entered	Graduates	% Grad	Entered	Graduates	% Grad	Entered	Graduates	% Grad
2003/04	11	<5	36%	26	17	65%	12	9	75%
2004/05	22	8	36%	32	13	41%	17	10	59%
2005/06	24	<5	4%	25	7	28%	15	5	33%
Grand Total	57	13	23%	83	37	45%	44	24	55%

Year	50-59			≥ 60			Total		
	Entered	Graduates	% Grad	Entered	Graduates	% Grad	Entered	Graduates	% Grad
2003/04	23	14	61%	47	38	81%	119	82	69%
2004/05	25	12	48%	47	35	74%	143	78	55%
2005/06	17	7	41%	49	34	69%	130	54	42%
Grand Total	65	33	51%	143	107	75%	392	214	55%

Table 23 demonstrates that, in general, degree completion rates are positively correlated to the amount of credits transferred to the university. For example, 75% of students who transferred 60 or more credits graduated, while only 23% of students who transferred less than 30 credits graduated. Many BC College Transfer students take less than a full course load, which means that graduation rates will appear depressed when derived from only five years of information.

⁵ Students who entered TRU after 2005/06 are not included in the degree completion rate calculation because they are not likely to have had sufficient time to graduate by the 2007/08 academic year.

Credential Type

Almost 87% of BC College Transfer students who graduated (245) in the five-year period were awarded baccalaureate degrees, with the balance of students split evenly between certificates and diplomas (Table 24).

Table 24: Credentials by Graduation Year, Region, and Credential Type

Region	2003/04	2004/05	2005/06	2006/07	2007/08	Grand Total
Interior/Kootenays	35	30	15	13	<5	97
BACC	32	27	13	12	-	84
CERT	-	-	-	-	<5	<5
DIPL	<5	<5	<5	<5	<5	11
Lower Mainland	17	32	31	11		91
ASSOC	<5	-	-	-	-	<5
BACC	11	27	31	8	-	77
CERT	-	<5	-	<5	-	<5
DIPL	<5	<5	-	<5	-	6
GRAD	<5	-	-	-	-	<5
Northern BC/Yukon	20	6	5	<5		32
BACC	18	6	5	<5	-	30
CERT	<5	-	-	-	-	<5
DIPL	<5	-	-	-	-	<5
Vancouver Island	10	10	<5	<5		25
ASSOC	-	<5	-	-	-	<5
BACC	10	7	<5	<5	-	22
CERT	-	<5	-	-	-	<5
DIPL	-	<5	-	-	-	<5
Grand Total	82	78	54	27	<5	245

Note: The 214 graduates completed 245 credentials.

Table 25 demonstrates that the majority of graduation credentials were awarded to students in the faculties of Arts (25%), Business and Economics (24%), and Social Work (22%).

Baccalaureate degrees comprise 88% of the credentials awarded while associate and graduate degrees comprise only 2% of the total credentials. The fewest credentials were awarded in the Schools of Advanced Technology & Math, and Education (2%) and the School of Trades & Technology.

Table 25: Credentials Awarded by Faculty and Type

Faculty	ASSOC	BACC	CERT	DIPL	GRAD	Grand Total
Faculty of Arts	<5	59	-	-	-	61
Faculty of Science	<5	21	<5	<5	-	26
School of Advanced Technology & Math	-	5	-	<5	-	8
School of Business & Economics	-	46	<5	8	<5	58
School of Education	-	5	-	-	-	5
School of Nursing	-	13	-	-	-	13
School of Social Work	-	52	<5	-	-	54
School of Tourism	-	12	-	6	-	18
School of Trades & Technology	-	-	<5	-	-	<5
Grand Total	<5	213	8	19	<5	245

Table 26: Credentials Awarded by Faculty and Region

Faculty	Interior/ Kootenays	Lower Mainland	Northern BC/Yukon	Vancouver Island	Grand Total
Faculty of Arts	22	26	8	5	61
Faculty of Science	13	9	<5	<5	26
School of Advanced Technology & Math	<5	<5	<5	-	8
School of Business & Economics	16	30	8	<5	58
School of Education	<5	<5	-	-	<5
School of Nursing	<5	<5	<5	<5	13
School of Social Work	29	7	10	8	54
School of Tourism	7	9	-	<5	18
School of Trades & Technology	-	<5	-	-	<5
Grand Total	97	91	32	25	245

BC College Transfer students from the Interior/Kootenays and Lower Mainland were awarded over 76% of credentials with Northern BC/Yukon and Vancouver Island graduates receiving the remaining 24% of credentials (Tables 26, 27).

Table 27: Credentials Awarded by Type, Program, and Region

Credential	Interior/Kootenays	Lower Mainland	Northern BC/Yukon	Vancouver Island	Grand Total
ASSOC	-	<5	-	<5	<5
Associate of Arts	-	<5	-	-	<5
Associate of Science	-	-	-	<5	<5
BACC	84	77	30	22	213
Bachelor of Arts	16	14	6	<5	38
Bachelor of Business Administration	11	23	8	<5	46
Bachelor of Computing Science	-	<5	-	-	<5
Bachelor of Education	<5	<5	-	-	<5
Bachelor of Fine Arts	-	<5	-	-	<5
Bachelor of Journalism	6	9	<5	<5	20
Bachelor of Nat. Resource Sc.	7	5	<5	<5	14
Bachelor of Science	<5	<5	-	<5	8
Bachelor of Science in Nursing	<5	<5	<5	<5	13
Bachelor of Social Work	29	7	9	7	52
Bachelor of Technology in Applied Computer Sciences	<5	<5	-	-	<5
Bachelor of Tourism Management	<5	7	-	<5	12
CERT	<5	<5	<5	<5	8
Administrative Assistant	-	<5	-	-	<5
Business Fundamentals	-	<5	-	-	<5
Horticulture	<5	-	-	-	<5
Social Services	-	-	<5	<5	<5
Welding	-	<5	-	-	<5
DIPL	11	6	<5	<5	19
Adventure Diploma	<5	-	-	-	<5
Animal Health Technology	<5	<5	-	-	<5
Assoc of Commerce & Business	<5	<5	-	-	<5
Business	<5	<5	-	-	<5
Digital Art and Design	<5	-	-	-	<5
Engineer Design and Drafting	-	-	<5	-	<5
Events & Conventions Mmgt	<5	<5	-	-	<5
Executive Assistant	-	<5	-	-	<5
Horticulture /Business	<5	-	-	-	<5
Tourism Management	-	<5	-	<5	<5
GRAD	-	<5	-	-	<5
Master of Business Admin	-	<5	-	-	<5
Grand Total	97	91	32	25	245

Table 28: Distribution of Cumulative GPA at Graduation from TRU by Year

Region	2003/04	2004/05	2005/06	2006/07	2007/08	Grand Total
Interior/Kootenays	2.71	2.83	2.83	3.05	2.65	2.81
College of the Rockies	2.87	3.35	2.24	3.13	2.61	2.93
Nicola Valley Institute of Technology	2.89	2.47	3.00	3.03	1.91	2.70
Okanagan College	3.17	2.88	2.84	3.03	2.55	2.88
Selkirk College	1.71	2.69	2.91	3.08	3.28	2.74
Lower Mainland	2.85	2.73	2.65	2.62	2.58	2.68
BC Institute of Technology	3.04	2.94	2.62	2.61	2.27	2.81
Capilano College	3.30	2.90	2.25	2.80	1.88	2.64
Columbia College	-	2.76	2.20	2.21	-	2.36
Coquitlam College	-	2.41	2.35	2.53	1.61	2.34
Douglas College	2.74	2.61	2.55	3.02	3.00	2.76
Institute of Indigenous Government	-	-	-	3.19	-	3.19
Kwantlen University College	2.13	2.81	2.34	2.32	2.57	2.49
Langara College	2.88	2.59	2.99	2.58	2.84	2.80
University College of the Fraser Valley	2.65	2.71	3.26	2.59	2.79	2.80
Vancouver Community College	-	1.52	3.29	-	3.44	2.89
Northern BC/Yukon	3.02	2.28	2.50	2.81	2.95	2.75
College of New Caledonia	3.00	2.21	2.66	2.99	2.91	2.79
Northern Lights College	3.38	3.69	2.97	2.55	3.51	3.12
Northwest Community College	3.04	1.80	1.66	2.41	2.10	2.45
Yukon College	2.12	2.94	-	3.17	-	2.74
Vancouver Island	2.87	2.65	2.75	2.55	2.57	2.68
Camosun College	2.99	2.69	2.62	2.11	2.75	2.62
North Island College	3.21	2.85	2.99	3.38	1.82	2.95
Malaspina University-College	2.59	2.36	3.19	2.81	2.41	2.61
Grand Total	2.83	2.72	2.70	2.79	2.64	2.74

Table 28 follows the average cumulative GPA at graduation for each region and institution, by year. Total average GPA at graduation, by year, follows a similar chronological pattern to that of other GPA benchmarks (GPA after the first term, after 15 credit hours, and after 30 credit hours).

Table 29 totals 2003/04 to 2007/08 graduate counts of BC College Transfer students, parsed by degree program. TRU graduates students from a wide range of programs each year, the most populous of which are Bachelor programs in the areas of Social Work, Business, Arts, and Journalism.

Table 29: BC College Transfers by Graduation Degree Program

Degree-Program	Graduates
Bachelor of Social Work	52
Bachelor of Business Administration	46
Bachelor of Arts	38
Bachelor of Journalism	20
Bachelor of Natural Resource Science	14
Bachelor of Science in Nursing	13
Bachelor of Tourism Management	12
Bachelor of Science	8
Bachelor of Education	5
Administrative Assistant	<5
Adventure Diploma	<5
Animal Health Technology	<5
Assoc of Commerce & Business	<5
Associate of Arts	<5
Associate of Science	<5
Bachelor of Computing Science	<5
Bachelor of Fine Arts	<5
Business	<5
Business Fundamentals	<5
Digital Art and Design	<5
Engineer Design and Drafting	<5
Events & Conventions Management	<5
Executive Assistant	<5
Horticulture	<5
Horticulture / Business	<5
Master of Business Admin	<5
Social Services	<5
Tourism Management	<5
Welding	<5
Grand Total	245

Section D: Profile of Students with College Experience

Students with College Experience are those students who have completed less than 24 transferable credits at a BC college, university college, or institute prior to commencing their studies at TRU. While these students are not normally considered 'transfer' by many institutions, they represent a relatively large proportion of TRU's incoming students each year, and are therefore included in this study.

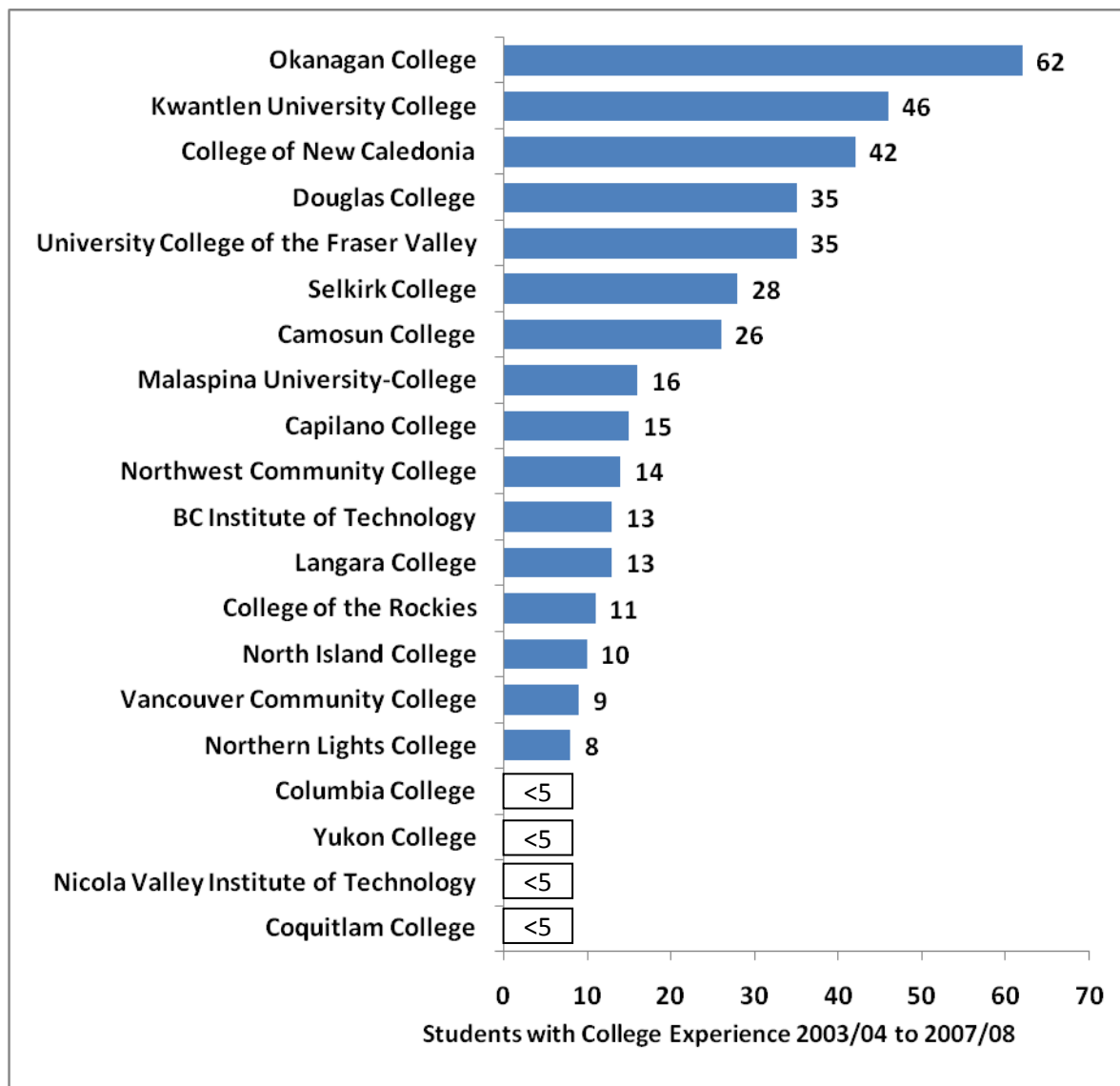
Table 30: Students with College Experience by Year of Admission

Region	2003/04	2004/05	2005/06	2006/07	2007/08	Grand Total
Interior/Kootenays	20	22	27	23	12	104
College of the Rockies	<5	<5	<5	<5	-	11
Nicola Valley Institute of Technology	<5	<5	<5	-	-	3
Okanagan College	10	12	15	16	9	62
Selkirk College	5	8	7	5	<5	28
Lower Mainland	31	35	40	34	32	172
BC Institute of Technology	<5	<5	<5	-	<5	13
Capilano College	<5	6	<5	<5	-	15
Columbia College	-	<5	-	<5	<5	<5
Coquitlam College	-	-	<5	-	-	<5
Douglas College	8	7	7	8	5	35
Kwantlen University College	5	6	14	8	13	46
Langara College	<5	<5	<5	<5	-	13
University College of the Fraser Valley	7	5	7	8	8	35
Vancouver Community College	<5	<5	<5	<5	<5	9
Northern BC/Yukon	11	17	12	14	13	67
College of New Caledonia	6	14	9	6	7	42
Northern Lights College	<5	<5	-	5	<5	8
Northwest Community College	<5	<5	<5	<5	5	14
Yukon College	<5	-	<5	-	-	<5
Vancouver Island	10	11	13	12	6	52
Camosun College	<5	6	6	7	<5	26
North Island College	<5	<5	<5	<5	<5	10
Malaspina University-College	5	<5	<5	<5	<5	16
Grand Total	72	85	92	83	63	395

Table 30 summarizes the institutions from which Students with College Experience have originated over the last five years. The total number of students with college experience who transferred to TRU was 395 from the 2003/04 academic year to the 2007/08 year, with the largest contributor being Okanagan College with a total of 62 students over the five year span. The largest group of students, totaling 172 over the five years, came from the Lower Mainland

institutions, particularly Kwantlen University College (46), Douglas College (35), and University College of the Fraser Valley (35). The next largest group of 104 students came from other institutions in the Interior/Kootenay region, including Okanagan College (62) and Selkirk College (28). The Northern BC/Yukon and Vancouver Island Regions also contributed students with college experience, with five year totals of 67 and 52, respectively. Incoming transfers of Students with College Experience peaked at 92 students in the 2005/06 academic year.

Figure G: Number of Students with College Experience by Institution



In Figure G, institutions are listed in order of total contributed Students with College Experience from 2003/04 to 2007/08. The top three contributing institutions are:

Okanagan College	62 students	(Interior/Kootenays)
Kwantlen University College	46 students	(Lower Mainland)
College of New Caledonia	42 students	(Northern BC/Yukon)

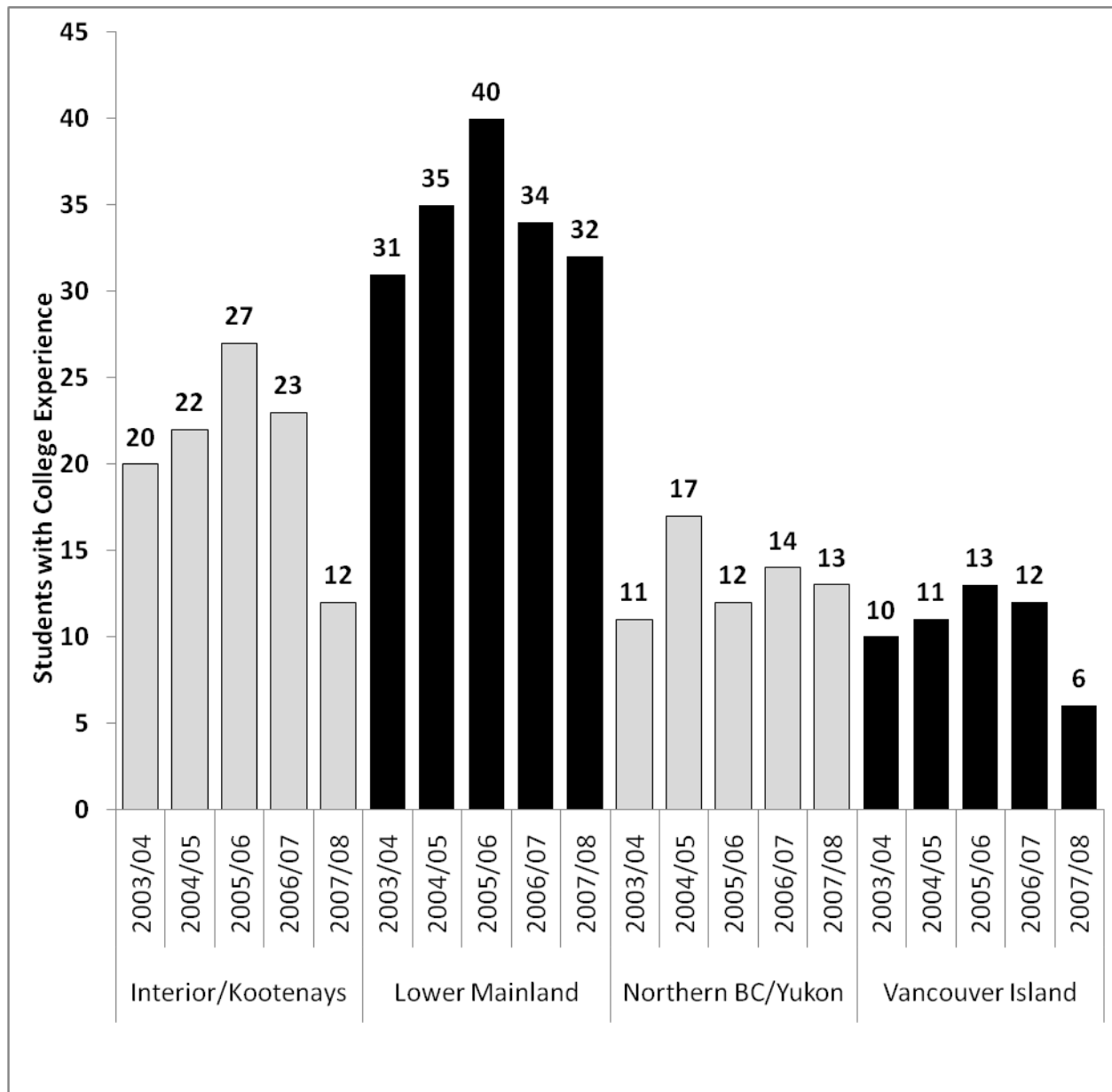
Figure H: Number of Students with College Experience by Region

Figure H groups the total number of Students with College Experience by year, and by region. The Lower Mainland contributes the most students, as is proportionate with its total student population. All regions share the same tendency towards a normal distribution, with totals peaking in either the 2005/06 or 2004/05 school years.

As seen in Table 31, Students with College Experience received an average of 10 credits upon transfer to TRU. Students from the Northern BC/Yukon region received an average of 12 credits each. The amount of transfer credits received by institution ranges from 5 from Nicola Valley Institute of Technology to 14 from College of the Rockies and Coquitlam College.

Table 31: Average Credits Transferred by Students with College Experience by Region and Institution

Region	Institution	Average Credits Transferred
Interior/Kootenays		10
	College of the Rockies	14
	Nicola Valley Institute of Technology	5
	Okanagan College	11
	Selkirk College	8
Lower Mainland		10
	BC Institute of Technology	6
	Capilano College	12
	Columbia College	11
	Coquitlam College	14
	Douglas College	10
	Kwantlen University College	9
	Langara College	13
	University College of the Fraser Valley	10
	Vancouver Community College	7
Northern BC/Yukon		12
	College of New Caledonia	12
	Northern Lights College	8
	Northwest Community College	12
	Yukon College	11
Vancouver Island		10
	Camosun College	11
	North Island College	10
	Malaspina University-College	10
Grand Total		10

Table 32 groups Students with College Experience by credits transferred to TRU, by region and institution. Students with College Experience most often transferred 3, 6, 9, 12 or 15 credits.

Table 32: Distribution of Students with College Experience by Credits Transferred

Region	Credit Transfer Category											Grand Total	
	1	2	3	5	6	9	12	14	15	17	18		21
Interior/Kootenays	1	3	16		19	18	16		13		10	8	104
College of the Rockies	-	-	-	-	<5	<5	<5	-	<5	-	-	<5	11
Nicola Valley Institute of Technology	-	-	<5	-	<5	-	-	-	-	-	-	-	<5
Okanagan College	<5	-	<5	-	13	13	12	-	8	-	8	<5	62
Selkirk College	-	<5	11	-	<5	<5	<5	-	<5	-	<5	<5	28
Lower Mainland	-	<5	35	<5	34	25	27	-	23	-	11	13	172
BC Institute of Technology	-	<5	5	-	<5	<5	<5	-	<5	-	-	-	13
Capilano College	-	-	<5	-	<5	<5	<5	-	5	-	<5	-	15
Columbia College	-	-	-	-	<5	<5	<5	-	<5	-	-	-	<5
Coquitlam College	-	-	-	-	-	-	<5	-	<5	-	-	-	<5
Douglas College	-	-	8	-	7	<5	5	-	5	-	<5	<5	35
Kwantlen University College	-	-	8	-	9	10	11	-	5	-	<5	<5	46
Langara College	-	-	<5	-	<5	<5	<5	-	<5	-	<5	<5	13
University of the Fraser Valley	-	-	11	-	8	<5	<5	-	<5	-	<5	5	35
Vancouver Community College	-	<5	<5	<5	<5	-	-	-	<5	-	-	<5	9
Northern BC/Yukon	-	<5	8	<5	9	9	8	<5	9	-	11	8	67
College of New Caledonia	-	<5	<5	<5	5	<5	<5	<5	6	-	9	<5	42
Northern Lights College	-	-	<5	-	<5	<5	<5	-	<5	-	-	-	8
Northwest Community College	-	-	<5	-	<5	<5	<5	-	<5	-	<5	<5	14
Yukon College	-	-	<5	-	-	<5	-	-	-	-	-	<5	<5
Vancouver Island	-	<5	8		9	5	9	-	9	<5	5	<5	52
Camosun College	-	<5	5	-	<5	<5	<5	-	<5	-	<5	<5	26
North Island College	-	<5	-	-	<5		<5	-	<5	<5	<5	-	10
Malaspina University-College	-	-	<5	-	<5	<5	<5	-	<5	-	<5	-	16
Grand Total	<5	12	67	<5	71	57	60	<5	54	<5	37	32	395

Table 33 shows the total number of credits transferred to TRU, grouped by region and year. The total credits transferred by Students with College Experience were 4073, which averages to 10.3 credits per Student with College Experience. The number of credits transferred by academic year has a range of 289, with a minimum of 650 credits in 2007/08 and a maximum of 957 credits in 2005/06. This maximum is consistent with the highest number of individual Students with College Experience transferring to TRU: 92 in the 2005/06 academic year. However, this relationship is not consistent across all years. In the 2003/04 academic year, 72 students with college experience transferred to TRU, bringing with them 819 credits, while in 2006/07, 83 Students with College Experience transferred only 708 credits.

Table 33: Students with College Experience Transfer Credit Actual Distributions

Region	2003/04	2004/05	2005/06	2006/07	2007/08	Grand Total
Interior/Kootenays	218	225	285	216	121	1065
Lower Mainland	365	371	387	266	296	1685
Northern BC/Yukon	104	215	164	134	164	781
Vancouver Island	132	128	121	92	69	542
Grand Total	819	939	957	708	650	4073

Table 34 shows the percent distribution of credits transferred by students with college experience from each region, by year. Students from the Lower Mainland consistently transferred the highest percentage of credits per year, ranging from 37.6% in 2006/07 to 45.5% in 2007/08 (a variance of 7.9%).

Table 34: Students with College Experience Transfer Credit Proportional Distributions

Region	2003/04	2004/05	2005/06	2006/07	2007/08	Grand Total
Interior/Kootenays	26.6%	24.0%	29.8%	30.5%	18.6%	26.1%
Lower Mainland	44.6%	39.5%	40.4%	37.6%	45.5%	41.4%
Northern BC/Yukon	12.7%	22.9%	17.1%	18.9%	25.2%	19.2%
Vancouver Island	16.1%	13.6%	12.6%	13.0%	10.6%	13.3%
Grand Total	100.0%	100.0%	100.0%	100.0%	100.0%	100.0%

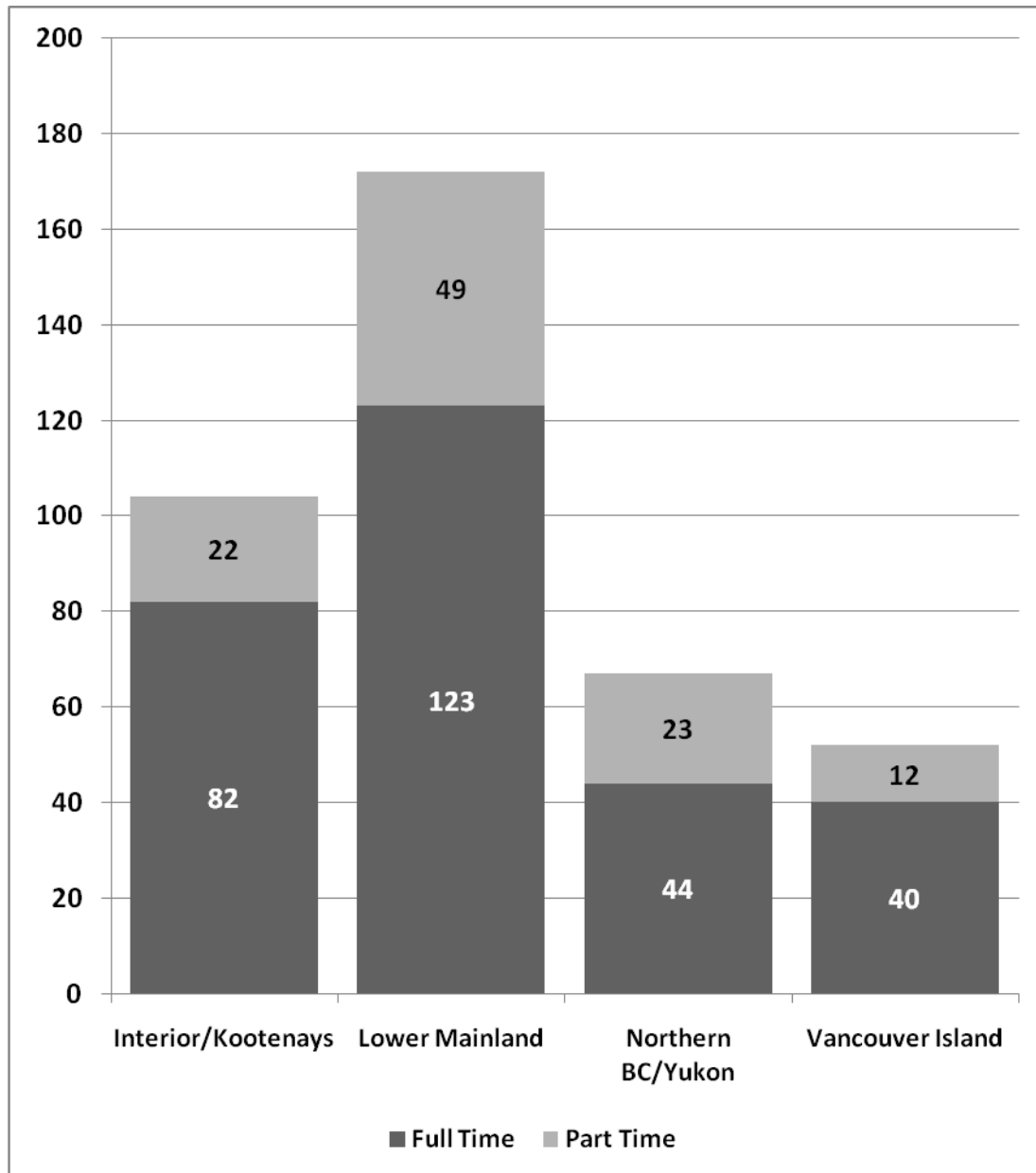
Table 35 demonstrates that approximately three quarters of all college experience students are full-time students. The proportion is very similar to that for BC College Transfer Students, as outlined in Section A.

The proportion of full-time and part-time students varied across regions, from 79% full-time for Interior/Kootenays Students with College Experience to 66% for students from Northern BC/Yukon. Regional proportions are graphed in Figure I.

Table 35: Students with College Experience - Full-time and Part-time Proportions by Region and Institution

Region	Full-time	Part-time	Grand Total
Interior/Kootenays	79%	21%	104
College of the Rockies	82%	18%	11
Nicola Valley Institute of Technology	33%	67%	<5
Okanagan College	81%	19%	62
Selkirk College	79%	21%	28
Lower Mainland	72%	28%	172
BC Institute of Technology	46%	54%	13
Capilano College	93%	7%	15
Columbia College	50%	50%	<5
Coquitlam College	0%	100%	<5
Douglas College	74%	26%	35
Kwantlen University College	76%	24%	46
Langara College	85%	15%	13
University of the Fraser Valley	71%	29%	35
Vancouver Community College	44%	56%	9
Northern BC/Yukon	66%	34%	67
College of New Caledonia	62%	38%	42
Northern Lights College	38%	63%	8
Northwest Community College	86%	14%	14
Yukon College	100%	0%	<5
Vancouver Island	77%	23%	52
Camosun College	85%	15%	26
North Island College	60%	40%	10
Malaspina University-College	75%	25%	16
Grand Total	73%	27%	395

Figure 1: Students with College Experience - Part-time and Full-time Proportions by Region



According to Table 36, the Faculty of Science received the most Students with College Experience (117) throughout the five year period, followed closely by the Faculty of Arts (115). The Lower Mainland region contributed the most students during this period, 172.

Table 36: Students with College Experience by Faculty and Region

Region	Advanced Technology & Mathematics	Arts	Business & Economics	Education	Nursing	Science	Social Work	Student Development	Tourism	Unclassified	Grand Total
Interior/Kootenays	<5	25	13	-	14	32	<5	<5	7	6	104
Lower Mainland	<5	56	22	<5	16	55	<5	-	14	<5	172
Northern BC/Yukon	-	24	7	-	8	15	<5	<5	<5	6	67
Vancouver Island	<5	10	11		5	15	-	<5	<5	<5	52
Grand Total	8	115	53	<5	43	117	7	<5	29	18	395

Table 37 illustrates that most Students with College Experience received diplomas upon graduation, in contrast with BC College Transfer students who received mostly baccalaureate degrees. Of the 103 graduates, 47 students received diplomas and 28 students received baccalaureate degrees.

Table 37: Students with College Experience Credentials Awarded by Region

Region	ASSOC	BACC	CERT	DIPL	Grand Total
Interior/ Kootenays	-	5	7	13	25
Lower Mainland	-	14	12	20	46
Northern BC/Yukon	<5	6	<5	<5	15
Vancouver Island	-	<5	<5	10	17
Grand Total	<5	28	27	47	103

Table 38 groups students by age range, region, and institution. These students were concentrated in the 20-21 age range (137 students). Thirty-five percent of Students with College Experience are aged 20 or 21 when they enter TRU. A wide age range exists, however, with 102 students aged less than 20 and 18 students aged 40 or older. Students with College Experience are younger than BC College Transfer Students, who have taken at least 24 credits at another post-secondary institution before registering at TRU.

Table 38: Students with College Experience Age Distribution by Region and Institution

Region	< 20	20 - 21	22 - 23	24 - 25	26 - 30	31 - 39	40 +	Grand Total
Interior/Kootenays	29	38	12	5	10	4	6	104
College of the Rockies	-	<5	<5	-	<5	<5	-	11
Nicola Valley Institute of Technology	<5	-	<5	-	-	-	-	<5
Okanagan College	15	26	6	<5	6	<5	<5	62
Selkirk College	13	8	<5	<5	<5	-	<5	28
Lower Mainland	38	59	37	16	7	8	7	172
BC Institute of Technology	<5	<5	<5	<5	<5	<5	<5	13
Capilano College	<5	<5	<5	<5	<5	-	<5	15
Columbia College	<5	<5	-	<5	-	-	-	<5
Coquitlam College	-	-	<5	<5	-	-	-	<5
Douglas College	6	10	11	<5	<5	<5	-	35
Kwantlen University College	12	21	9	<5	-	-	<5	46
Langara College	<5	<5	<5	<5	-	-	-	13
University College of the Fraser Valley	10	12	6	<5	-	<5	<5	35
Vancouver Community College	-	<5	<5	-	<5	<5	<5	<5
Northern BC/Yukon	21	22	7	5	6	<5	<5	67
College of New Caledonia	12	13	<5	<5	5	-	<5	42
Northern Lights College	<5	<5	-	<5	-	<5	-	8
Northwest Community College	6	<5	-	<5	<5	<5	-	14
Yukon College	<5	<5	-	-	-	-	-	<5
Vancouver Island	14	18	6	<5	6	<5	<5	52
Camosun College	<5	9	5	<5	5	<5	<5	26
North Island College	<5	<5	-	<5	-	-	<5	10
Malaspina University-College	<5	6	<5	<5	<5	<5	-	16
Grand Total	102	137	62	29	29	18	18	395

According to Table 39, female students make up a larger proportion of Students with College Experience (70%) than of BC College Transfer Students (61%). This proportion ranges from 33% from Yukon College (N=<5) to 100% from Vancouver Community College (N=9).

Table 39: Gender Distribution of Students with College Experience by Region and Institution

Region	F	M	Total
Interior/Kootenays	65%	35%	104
College of the Rockies	36%	64%	11
Nicola Valley Institute of Technology	67%	33%	<5
Okanagan College	68%	32%	62
Selkirk College	71%	29%	28
Lower Mainland	72%	28%	172
BC Institute of Technology	77%	23%	13
Capilano College	80%	20%	15
Columbia College	75%	25%	<5
Coquitlam College	50%	50%	<5
Douglas College	60%	40%	35
Kwantlen University College	72%	28%	46
Langara College	85%	15%	13
University College of the Fraser Valley	69%	31%	35
Vancouver Community College	100%	0%	9
Northern BC/Yukon	73%	27%	67
College of New Caledonia	79%	21%	42
Northern Lights College	63%	38%	8
Northwest Community College	71%	29%	14
Yukon College	33%	67%	<5
Vancouver Island	65%	35%	52
Camosun College	54%	46%	26
North Island College	80%	20%	10
Malaspina University-College	75%	25%	16
Grand Total	70%	30%	395

Appendices

Appendix I: Course Abbreviations

Abbreviation	Discipline
ANTH	Anthropology
BBUS	Business
BUEC	Business Economics
CHEM	Chemistry
ECON	Economics
EDEF	Education
EDLL	Education Language and Literacy
EDMA	Education Mathematics
EDPE	Education Physical Education
EDPY	Educational Psychology
EDSC	Education Sciences
EDSO	Educational Social Studies
EDTL	Education Teaching and Learning
ENGL	English
GEOG	Geography
HIST	History
HLSC	Health Sciences
JOUR	Journalism
MATH	Mathematics
NSRC	Natural Resource Science
NURS	Nursing
PHIL	Philosophy
PSYC	Psychology
SOCW	Social Work
SPAN	Spanish
TMGT	Tourism Management



709 - 555 Seymour Street
Vancouver BC Canada V6B 3H6
bccat.ca | admin@bccat.ca
t 604 412 7700 | f 604 683 0576