
Profile of BC College Transfer Students Admitted to the University of Victoria 1994/95 to 1998/99

April 2000

Prepared by:

Alan Wilson

Ciel McGuire

Chris Conway

Office of Institutional Analysis

University of Victoria

555 SEYMOUR STREET
SUITE 709
VANCOUVER, BC
V6B 3H6
CANADA

TEL: 604-412-7700
FAX: 604-683-0576

EMAIL: admin@bccat.bc.ca
WEB: www.bccat.bc.ca

Prepared for and Funded by the

BRITISH COLUMBIA COUNCIL ON
ADMISSIONS & TRANSFER

SUPPORTING BC's
EDUCATION SYSTEM

**Profile of B.C. College Transfer Students
Admitted to the University of Victoria
1994-95 to 1998-99**

**by Alan Wilson
Ciel McGuire
Chris Conway
Office of Institutional Analysis
University of Victoria
P.O. Box 1700
Victoria, B.C. V8W 2Y2
telephone (250) 721-8029**

**Funding for this project was provided by
The British Columbia Council on Admissions and Transfer
709 - 555 Seymour Street
Vancouver, B.C., V6B 3H6
telephone (604) 412-7700
facsimile (604) 683-0576
e-mail admin@bccat.bc.ca
world wide web: www.bccat.bc.ca**

**© Copyright 2000
The British Columbia Council on Admissions and Transfer
BCCAT is the official mark of the B.C. Council
on Admissions and Transfer
as published by the Registrar of Trade-marks
of the Canadian Intellectual Property Office**

**This report is also available in Adobe Acrobat
Portable Document Format (pdf)
from BCCAT Online, the Internet service of the
B.C. Council on Admissions and Transfer:
www.bccat.bc.ca**

**Photocopying and further distribution of this document is permitted
Please credit source**

TABLE OF CONTENTS

INTRODUCTION	4
A. PROFILE OF B.C COLLEGE TRANSFER STUDENTS	10
Table 1 - B.C. College Transfers Admitted to UVic by Year of Admission	11
Figure 1 - B.C. College Transfers Admitted to UVic by College.....	12
Table 2 - B.C. College Transfers Admitted to UVic by Total Transfer Credit Units	13
Table 3 - B.C. College Transfers Admitted to UVic by Session Type and Full-Time/Part-Time Status	14
Table 4 - B.C. College Transfers Admitted to UVic by Faculty	15
Table 5 - B.C. College Transfers Admitted to UVic by Degree Expected	16
Table 6 - B.C. College Transfers Admitted to UVic by Program Area.....	17
Table 7 - B.C. College Transfers Admitted to UVic by Age Interval	19
Table 8 - B.C. College Transfers Admitted to UVic by Gender.....	20
Table 9 - B.C. College Transfers Admitted to UVic by Admission Average.....	21
B. ACADEMIC PERFORMANCE OF B.C. COLLEGE TRANSFER STUDENTS	22
Table 10 - Academic Performance of B.C. College Transfers Admitted to UVic.....	23
Table 11 - Course Performance of B.C. College Transfers Admitted to UVic.....	24
Figure 2 - Academic Performance Comparison of B.C. High School Entrants and B.C. College Transfers Admitted to UVic.....	36
Table 12 - Graduation Rates of B.C. College Transfers Admitted to UVic by Total Transfer Credit Units	38
Table 13 - Cumulative UVic GPA of B.C. College Transfers Admitted to UVic at time of Graduation.....	40
Figure 3 - Cumulative UVic GPA Comparison of B.C. High School Entrants and B.C. College Transfers Admitted to UVic	42
C. PROFILE OF B.C. COLLEGE TRANSFER STUDENTS WHO GRADUATED	43
Table 14 - Academic Performance of B.C. College Transfers Admitted to UVic Who Graduated.....	44
Table 15 - Graduation Area of B.C. College Transfers Admitted to UVic	45
Table 16 - Credentials Awarded to B.C. College Transfers Admitted to UVic.....	47
Table 17 - Average Years to Credential for B.C. College Transfers who have Graduated	48
D. PROFILE OF STUDENTS WITH COLLEGE EXPERIENCE	49
Table 18 - Students With College Experience Admitted to UVic by Year of Admission.....	50
Table 19 - Students With College Experience Admitted to UVic by Age Interval	51
Table 20 - Students With College Experience Admitted to UVic by Gender	52
APPENDIX	53
Definitions and Technical Notes	53

INTRODUCTION

The *Profile of B.C. College Transfer Students Admitted to the University of Victoria 1994/95 to 1998/99* examines the population of college transfer students who entered the university during the last five years. It is modelled on a similar report produced by the Office of Analytical Studies at Simon Fraser University, with some Tables modified to reflect the different academic structure at UVic. In contrast to SFU, which has three equal semesters, the UVic academic year is divided into a four-month summer session and an eight-month winter session. During the last five years, 89% of B.C. college transfers and 99% of B.C. high school entrants began their work at UVic during a winter session.

Students by Admission Category (Undergraduate)

Category	1994/95	%	1995/96	%	1996/97	%	1997/98	%	1998/99	%	Total	%
B.C. High School	1,512	34.6	2,091	38.1	1,918	37.5	1,694	34.6	1,537	34.1	8,752	35.9
B.C. College Transfer	1,329	30.4	1,512	27.6	1,383	27.1	1,400	28.6	1,288	28.6	6,912	28.3
Degree Holder	436	10.0	407	7.4	460	9.0	372	7.6	390	8.7	2,065	8.5
Out-of-Province Secondary	144	3.3	330	6.0	287	5.6	340	6.9	233	5.2	1,334	5.5
Out-of-Province University	152	3.5	203	3.7	223	4.4	207	4.2	145	3.2	930	3.8
Out-of-Province College	122	2.8	113	2.1	160	3.1	173	3.5	186	4.1	754	3.1
Special Access (Mature, Disabled)	213	4.9	147	2.7	76	1.5	65	1.3	59	1.3	560	2.3
B.C. University Transfer	80	1.8	109	2.0	109	2.1	65	1.3	67	1.5	430	1.8
Other	384	8.8	576	10.5	494	9.7	587	12.0	603	13.4	2,644	10.8
Total	4,372	100.0	5,488	100.0	5,110	100.0	4,903	100.0	4,508	100.0	24,381	100.0

Students with Some College Transfer Credit by Admission Category (Undergraduate)

Category	1994/95	%	1995/96	%	1996/97	%	1997/98	%	1998/99	%	Total	%
B.C. College Transfer	1,329	74.0	1,512	75.8	1,383	76.0	1,400	78.5	1,288	76.0	6,912	76.0
B.C. High School	71	4.0	102	5.1	90	4.9	85	4.8	68	4.0	416	4.6
Degree Holder	68	3.8	66	3.3	97	5.3	61	3.4	85	5.0	377	4.1
Special Access (Mature, Disabled)	108	6.0	59	3.0	26	1.4	32	1.8	32	1.9	257	2.8
B.C. University Transfer	40	2.2	45	2.3	44	2.4	18	1.0	24	1.4	171	1.9
Out-of-Province Secondary	5	0.3	10	0.5	1	0.1	6	0.3	7	0.4	29	0.3
Out-of-Province University	17	0.9	22	1.1	20	1.1	14	0.8	12	0.7	85	0.9
Out-of-Province College	11	0.6	7	0.4	21	1.2	15	0.8	16	0.9	70	0.8
Other	148	8.2	173	8.7	137	7.5	152	8.5	163	9.6	773	8.5
Total	1,797	100.0	1,996	100.0	1,819	100.0	1,783	100.0	1,695	100.0	9,090	100.0

In addition to B.C. college transfers and B.C. high school entrants, students may be admitted to UVic in a number of other categories, as tabulated above. Not surprisingly, B.C. high school and B.C. college transfers form the bulk of new admissions. Also tabulated above are students by admission category with some B.C. college credit. Most of these students are, of course, B.C. college transfer students. Nevertheless, an average of about 400 students were admitted annually in other categories who also transferred college credits to UVic.

The focus of this report is on those students admitted to the University of Victoria as B.C. college transfers. In most cases, students in this category have at least twelve units of transfer credit. Sixty units (fifteen units in each of four years) are usually required for a bachelor's degree, where a 1.5 unit UVic course is comparable to a 3 credit course at most other B.C. universities and colleges. The tabulations in this report are generally by the B.C. college the student attended. These colleges are grouped into two regions particularly appropriate for mainland B.C. universities: Lower Mainland, and Non Lower Mainland. Lower Mainland is divided into two categories: Public and Private. Non Lower Mainland is divided into three regions: Northern B.C., Interior/Kootenays, and Vancouver Island. When the student attended and earned transfer credits from more than one college, the one shown is where the majority of such credits were earned. In cases where the number of credits earned from each college is the same, the most recently attended college is shown.

ANALYSIS

A. Profile of B.C. College Transfer Students

The report is divided into four sections. **Section A**, composed of Tables 1-9, provides a general profile of the 6,912 B.C. college transfer students who first registered and commenced studies at UVic in any session between summer 1994 and winter 1998/99. This group includes the 422 students (6.1%) who withdrew sometime during their first session. For someone who began in September in a winter session, this withdrawal could have been as late as February, after the completion of fall courses.

Table 1, *B.C. College Transfers Admitted to UVic by Year of Admission*, tabulates B.C. College transfers by region, college, and year of admission. Counts of students admitted from B.C. high schools are included for comparison. Most of these will have entered UVic directly after graduation, but some may have entered later. The number of both B.C. high school and B.C. college entrants have declined over the last few years – the result of admission limitations fueled by funding constraints. As one would expect, Camosun College in Victoria leads all others by a wide margin as a source, and supplies 32% (**Figure 1**) of all B.C. college transfers to UVic. Malaspina University-College, also on Vancouver Island, is a distant second at 10%, and the Okanagan University College in the Interior is third at 9%.

Table 2, *B.C. College Transfers Admitted To UVic By Total Transfer Credit Units*, tabulates B.C. college transfers by college and transfer credits. Over a third of all transfer students entered with at least 27.5 units. Almost one third entered with 17 or fewer units. Note that not all transfer units may be applicable to all degrees.

Table 3, *B.C. College Transfers Admitted To UVic By Session Type & Full-Time/Part-Time Status*, breaks down entrants by session type. For winter session entrants, the full-time/part-time status is also displayed. Full-time requires enrolment in at least twelve units of course work for students not

enrolled in a co-op program. All co-op students are defined as full-time. As noted above, about 11% of B.C. college transfer students began in the summer, compared to only 1% of B.C. high school entrants. B.C. high school winter session entrants are much more likely to enroll as full-time students (71%) than B.C. college transfers (50%). Students from the Lower Mainland are more likely to enroll as part time students than students from the non-lower mainland, especially Interior/Kootenays.

Though **Table 4**, *B.C. College Transfers Admitted to UVic by Faculty*, which tabulates students by the faculty entered, has been included to correspond to the SFU report, it is not particularly meaningful. The vast majority of B.C. high school entrants (85%) started in UVic's general Faculty of Arts and Science (although this faculty was subdivided in 1997), while 63% of B.C. college transfers started there. Usually, first year students cannot enter the Faculties of Business, Education, Human and Social Development, or Law. Because most college transfer students enter UVic at a second year level or higher, they can directly enter these faculties. Thus this Table is more a reflection of year level than degree intention.

Table 5, *B.C. College Transfers Admitted to UVic by Degree Expected*, shows that the most frequent choice (by 31%) is one of the many BA degree programs. Since UVic students are not required to declare a degree program until third year, the second highest “degree expected” is Arts & Science Undeclared (19%). The third degree expected (by 16%) is a Bachelor of Science degree.

Table 6, *B.C. College Transfers Admitted To UVic by Program Area*, is included to meet the requirement of compatibility with the Simon Fraser report. However, since most B.C. college transfer students do not specify an area of study during their first session at UVic, the program areas displayed are combinations of faculty and degree expected data. For B.C. college transfers, the most popular initial program area is Arts (31%) followed by “Arts & Science Unspecified” (19%).

Table 7, *B.C. College Transfers Admitted to UVic by Age Interval*, displays the age distribution of college transfer students. On average, college entrants are five years older (23.6) than high school entrants (18.1). Entrants from BCIT and NLC are older (29.4 & 29.2) than entrants from other colleges.

Table 8, *B.C. College Transfers Admitted To UVic By Gender*, shows that UVic’s traditional preponderance of women holds for both B.C. college transfers and B.C. high school entrants, where females represent 59% and 57% of all entrants respectively. Of the 18 colleges, only Coquitlam provided more men than women.

Table 9, *B.C. College Transfers Admitted To UVic By Admission Average*, gives an overall mean of 73.5 and an overall median of 73.2. The official minimum admission average requirement for B.C. college transfers was 60 in 1994/95, 1995/96, 1996/97 and 1997/98.

B. Academic Performance of B.C. College Transfer Students

Section B examines the UVic performance of B.C. college entrants, and is composed of Tables 10-13 and Figures 2 and 3. Like section A, Tables 10 and 11 provide a profile of all 6,912 B.C. college transfer students who first registered and commenced studies at UVic in any session between summer 1994 and winter 1998/99. Tables 12 and 13 focus on those who entered between summer 1994 and winter 1995/96, and hence have had sufficient time to earn a credential.

In addition to the admission average, **Table 10**, *Academic Performance of B.C. College Transfers Admitted To UVic* gives the first session grade point average, graduating grade point average, and cumulative grade point average of B.C. college entrants. A grade point is a numerical value given to a letter grade, with 9 equivalent to A⁺, 8 to A, 7 to A⁻, 6 to B⁺, 5 to B, 4 to B⁻, 3 to C⁺, 2 to C, 1 to D, and 0 to failure. The graduating GPA of a student in a bachelor's degree program is based on grades in 300 and 400 level (and in Education, 700 level) courses acceptable within the degree program being taken. The cumulative GPA is based on all courses taken while at the university. Students from BCIT, who also were the oldest of the eighteen colleges, had both the highest average graduating and cumulative GPAs, at 6.48 and 6.23 respectively. Coquitlam College, the only college to supply more men than women, had the lowest graduating and cumulative GPAs, at 4.23 and 4.33 respectively. (See also Appendix "Comparing Grading Systems").

Table 11, *Course Performance of B.C. College Transfers Admitted To UVic* spans twelve pages, and compares the performance of B.C. college and B.C. high school entrants in a selection of high-enrollment courses. For college categories with only one or two students in a given course, the mean admission average and average course grade are not given. **Figure 2** summarizes the average grades of B.C. college transfers and B.C. high school entrants for these thirty-five courses. In all but one of the courses (BIOL 215), the high school entrants scored significantly higher than the college entrants. A partial explanation may be "transfer shock", given that many of the college students were attending university for the first time, while most, if not all, of the high school students had attended UVic in a previous session.

Table 12, *Graduation Rates of B.C. College Transfers Admitted to UVic by Total Transfer Credit Units*, tabulates the graduation rates of B.C. college transfers by college and total transfer credit units at the time of admission, for those who entered in 1994/95 or 1995/96. As one would expect, these rates tend to be higher for those who entered with more transfer credits, and hence were further along in their programs. Also, differences among colleges in the average number of transfer credits among its students would lead to differences in graduation rates. Note that those who withdrew during their first session are included. 57.4% of students who entered in 1994/95 or 1995/96 have graduated, but some who entered in 1994/95 or 1995/96 are still at UVic and will graduate in the future.

As shown in **Table 13**, *Cumulative UVic GPA of B.C. College Transfers Admitted to UVic at Time of Graduation*, the 2,178 graduating B.C. college transfer students who entered between 1994/95 and 1998/99 had a mean cumulative GPA of 5.60. As noted above, the cumulative GPA is based on all

courses taken while at UVic. The University College of the Fraser Valley and BCIT were the highest among the colleges at 6.08 and 6.06 respectively. **Figure 3** compares the cumulative GPA of B.C. college transfers with B.C. high school entrants. Since high school entrants usually begin at UVic at the first year level, rather than at the second or third year level like college transfers, only 676 have graduated.

C. Profile of B.C. College Students who Graduated

Section C, composed of **Tables 14-17**, focuses on the 2,178 B.C. college transfer students admitted to UVic during the last five years who have graduated.

Table 14, *Academic Performance of B.C. College Transfers Admitted to UVic Who Graduated*, summarizes the grade performance of this group. The students from the five colleges (BCIT, University College of the Fraser Valley, Selkirk College, North Island College, and the College of New Caledonia) with the highest cumulative GPA also had above average first session GPAs and admission averages. Students from the four colleges (Coquitlam, Columbia, Kwantlen, and Douglas) with the lowest cumulative GPAs also had below average first session GPAs and admission averages.

Table 15, *Graduation Area of B.C. College Transfers Admitted to UVic*, shows that the most popular areas are psychology (chosen by 10%), nursing (9.5%), and commerce (9%).

Table 16, *Credentials Awarded to B.C. College Transfers Admitted to UVic*, shows the distribution by degree awarded. For both B.C. college transfer students and B.C. high school entrants, BAs predominated at 44.1% and 44.7% respectively. BScs are a distant second at 17.6% and 27.7% respectively, with a BSc in Nursing completed by 9.5% of college transfers.

Table 17, *Average Years to Credential for B.C. College Transfers who have Graduated Admitted to UVic by Credential Awarded*, shows the average number of years to graduation by credential awarded, the overall average being 2.8. This period of time is measured from when the student first entered UVic, whether enrolment was continuous from the time of entry to the time of graduation or not. These figures are largely dependent on the number of transfer credits the entering student would have had. Figures will change as more students graduate.

D. Profile of Students with College Experience

Section D, comprised of **Tables 18-20**, profiles the 2,178 students who were not admitted to UVic on the basis of work at a B.C. college, but who attended a B.C. college sometime in the past. This group includes those admitted on the basis of a B.C. high school, mature students, students from another university, etc. In cases where more than one college was attended, the most recent is chosen. The sharp-eyed reader may notice the total count of 2,178 for this group is the same as the count of B.C. college transfer students admitted to UVic during the last five years who have graduated (**Tables 14-17**). This has occurred by chance – the two groups do not contain any common students.

Table 18, *Students with College Experience Admitted to UVic by Year of Admission*, shows that, as in Table 1, the three top sources of students with college experience admitted to UVic are Camosun College (24%), Okanagan University College (16%), and Malaspina University-College (12%).

Table 19, *Students with College Experience Admitted to UVic by Age Interval*, which gives the age distribution of students with college experience, shows that, with a mean age of 29.2, they are considerably older than college transfer students, whose mean age from **Table 7** is 23.6. A significant proportion (18%) are more than 39 years old.

Table 20, *Students with College Experience Admitted to UVic by Gender*, shows that over two-thirds are women, with only the private colleges of Columbia and Coquitlam providing more men than women. This proportion of women is higher than the B.C. College Transfer group.

Section A

PROFILE OF B.C. COLLEGE TRANSFER STUDENTS

Table 1
B.C. College Transfers Admitted To UVic By Year Of Admission

Region/College	1994/95	1995/96	1996/97	1997/98	1998/99	Total
Non Lower Mainland						
Northern B.C.						
College of New Caledonia	23	24	18	19	25	109
Northern Lights College	5	7	10	8	7	37
Northwest Community College	<u>23</u>	<u>23</u>	<u>20</u>	<u>18</u>	<u>18</u>	102
	51	54	48	45	50	248
Interior/Kootenays						
College of the Rockies (EKCC)	33	31	21	20	23	128
Okanagan University College	151	125	137	119	116	648
Selkirk College	50	47	49	46	40	232
UC of the Cariboo	<u>64</u>	<u>66</u>	<u>58</u>	<u>65</u>	<u>71</u>	324
	298	269	265	250	250	1,332
Vancouver Island						
Camosun College	445	504	438	454	388	2,229
Malaspina University College	130	147	111	161	154	703
North Island College	<u>31</u>	<u>29</u>	<u>46</u>	<u>35</u>	<u>43</u>	184
	606	680	595	650	585	3,116
Total Non Lower Mainland	955	1,003	908	945	885	4,696
Lower Mainland						
Public						
BCIT	15	26	39	34	40	154
Capilano College	76	93	73	63	41	346
Douglas College	49	90	71	84	80	374
Kwantlen University College	59	86	89	78	71	383
UC of the Fraser Valley	35	37	32	33	26	163
Langara College	<u>95</u>	<u>136</u>	<u>125</u>	<u>118</u>	<u>112</u>	586
	329	468	429	410	370	2,006
Private						
Columbia College	30	25	34	26	20	135
Coquitlam College	<u>15</u>	<u>16</u>	<u>12</u>	<u>19</u>	<u>13</u>	75
	45	41	46	45	33	210
Total Lower Mainland	374	509	475	455	403	2,216
Total B.C. College Transfers	1,329	1,512	1,383	1,400	1,288	6,912
Total B.C. High School Entrants	1,512	2,091	1,918	1,694	1,537	8,752

Percentage Distribution

Non Lower Mainland						
Nothern B.C.	3.8	3.6	3.5	3.2	3.9	3.6
Interior/Kootenays	22.4	17.8	19.2	17.9	19.4	19.3
Vancouver Island	<u>45.6</u>	<u>45.0</u>	<u>43.0</u>	<u>46.4</u>	<u>45.4</u>	45.1
Total Non Lower Mainland	71.9	66.3	65.7	67.5	68.7	67.9
Lower Mainland						
Public	24.8	31.0	31.0	29.3	28.7	29.0
Private	<u>3.4</u>	<u>2.7</u>	<u>3.3</u>	<u>3.2</u>	<u>2.6</u>	3.0
Total Lower Mainland	28.1	33.7	34.3	32.5	31.3	32.1
Grand Total	100.0	100.0	100.0	100.0	100.0	100.0

Figure 1

BC College Transfers Admitted to UVic by College 1994/95 to 1998/99

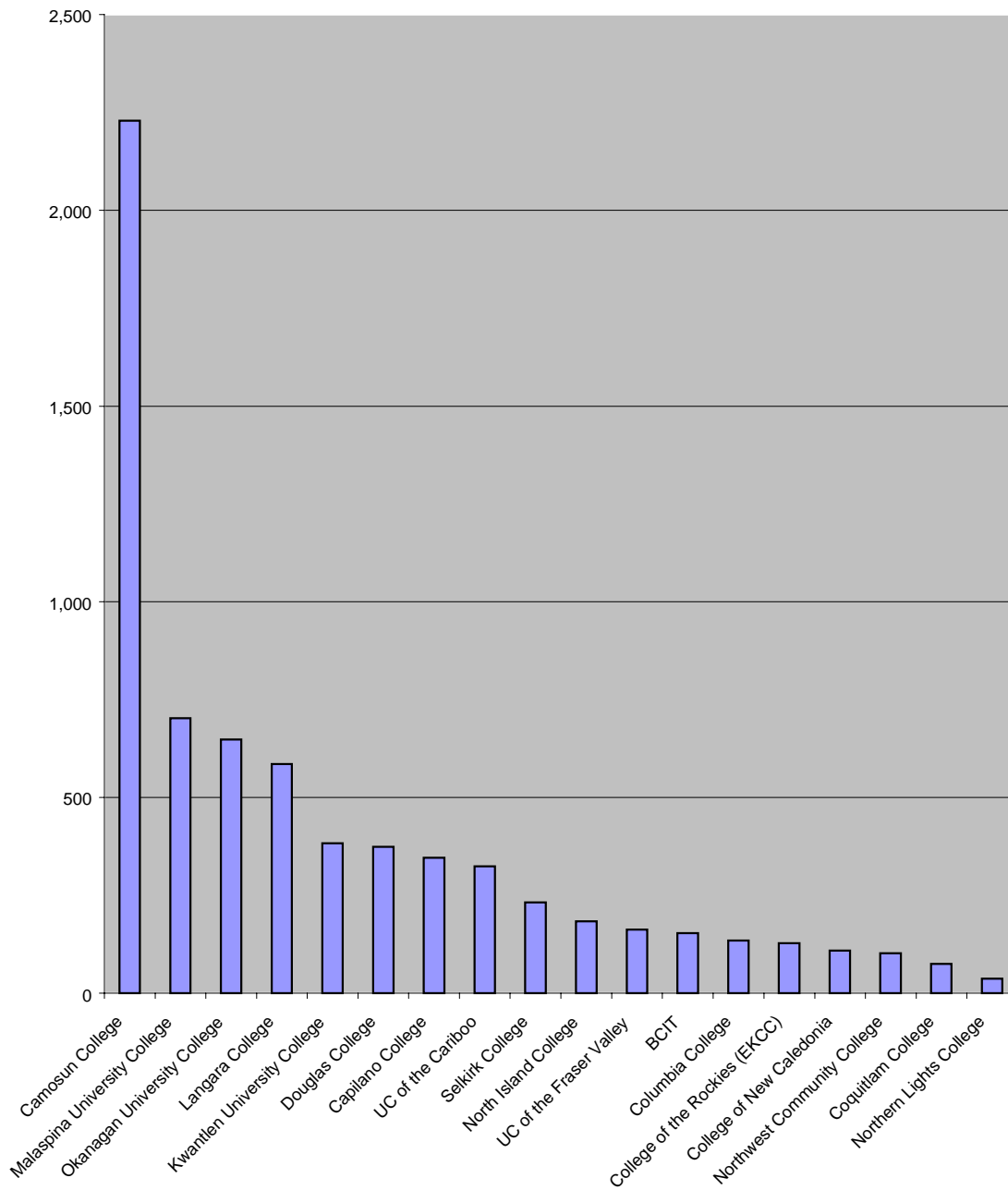


Table 2
B.C. College Transfers Admitted To UVic By Total Transfer Credit Units
(1994/95 to 1998/99)

Region/College	<15	15-17	17.5-19.5	20-22	22.5-24.5	25-27	>27.5	Total
Non Lower Mainland								
Northern B.C.								
College of New Caledonia	22	17	9	9	15	11	26	109
Northern Lights College	6	3	4	0	2	2	20	37
Northwest Community College	13	33	11	6	8	8	23	102
	41	53	24	15	25	21	69	248
Interior/Kootenays								
College of the Rockies (EKCC)	12	18	7	4	7	7	73	128
Okanagan University College	90	142	46	26	56	41	247	648
Selkirk College	20	63	19	6	23	26	75	232
UC of the Cariboo	49	53	23	16	42	31	110	324
	171	276	95	52	128	105	505	1,332
Vancouver Island								
Camosun College	384	302	282	131	227	256	647	2,229
Malaspina University College	65	94	51	32	65	97	299	703
North Island College	45	37	12	6	11	13	60	184
	494	433	345	169	303	366	1,006	3,116
Total Non Lower Mainland	706	762	464	236	456	492	1,580	4,696
Lower Mainland								
Public								
BCIT	14	12	2	1	5	23	97	154
Capilano College	57	54	47	14	36	41	97	346
Douglas College	43	36	44	17	39	28	167	374
Kwantlen University College	72	52	58	28	38	22	113	383
UC of the Fraser Valley	29	18	17	9	24	19	47	163
Langara College	51	52	65	24	60	47	287	586
	266	224	233	93	202	180	808	2,006
Private								
Columbia College	16	38	30	10	25	7	9	135
Coquitlam College	8	21	17	9	10	4	6	75
	24	59	47	19	35	11	15	210
Total Lower Mainland	290	283	280	112	237	191	823	2,216
Total B.C. College Transfers	996	1,045	744	348	693	683	2,403	6,912

Percentage Distribution

Non Lower Mainland								
Nothern B.C.	16.5	21.4	9.7	6.0	10.1	8.5	27.8	100.0
Interior/Kootenays	12.8	20.7	7.1	3.9	9.6	7.9	37.9	100.0
Vancouver Island	15.9	13.9	11.1	5.4	9.7	11.7	32.3	100.0
Total Non Lower Mainland	15.0	16.2	9.9	5.0	9.7	10.5	33.6	100.0
Lower Mainland								
Public	13.3	11.2	11.6	4.6	10.1	9.0	40.3	100.0
Private	11.4	28.1	22.4	9.0	16.7	5.2	7.1	100.0
Total Lower Mainland	13.1	12.8	12.6	5.1	10.7	8.6	37.1	100.0
Grand Total	14.4	15.1	10.8	5.0	10.0	9.9	34.8	100.0

Table 3
B.C. College Transfers Admitted To UVic By Session Type & Full-Time/Part-Time Status
(1994/95 to 1998/99)

Region/College	Summer	Winter FT	Winter PT	Total	Percentage	
					Winter FT	Winter PT
Non Lower Mainland						
Northern B.C.						
College of New Caledonia	6	57	46	109	55.3	44.7
Northern Lights College	4	15	18	37	45.5	54.5
Northwest Community College	8	65	29	102	69.1	30.9
	18	137	93	248	59.6	40.4
Interior/Kootenays						
College of the Rockies (EKCC)	9	89	30	128	74.8	25.2
Okanagan University College	28	423	197	648	68.2	31.8
Selkirk College	10	142	80	232	64.0	36.0
UC of the Cariboo	9	196	119	324	62.2	37.8
	56	850	426	1,332	66.6	33.4
Vancouver Island						
Camosun College	285	763	1,181	2,229	39.2	60.8
Malaspina University College	70	373	260	703	58.9	41.1
North Island College	8	104	72	184	59.1	40.9
	363	1,240	1,513	3,116	45.0	55.0
Total Non Lower Mainland	437	2,227	2,032	4,696	52.3	47.7
Lower Mainland						
Public						
BCIT	10	51	93	154	35.4	64.6
Capilano College	34	168	144	346	53.8	46.2
Douglas College	45	118	211	374	35.9	64.1
Kwantlen University College	36	173	174	383	49.9	50.1
UC of the Fraser Valley	11	101	51	163	66.4	33.6
Langara College	100	173	313	586	35.6	64.4
	236	784	986	2,006	44.3	55.7
Private						
Columbia College	38	41	56	135	42.3	57.7
Coquitlam College	18	17	40	75	29.8	70.2
	56	58	96	210	37.7	62.3
Total Lower Mainland	292	842	1,082	2,216	43.8	56.2
Total B.C. College Transfers	729	3,069	3,114	6,912	49.6	50.4
Total B.C. High School Entrants	70	6,203	2,479	8,752	71.4	28.6

Table 4
B.C. College Transfers Admitted to UVic by Faculty
(1994/95 to 1998/99)

Region/College	Arts & Science	Business	Education	Engineering	Fine Arts	Human & Social Development	Law	Total
Non Lower Mainland								
Northern B.C.								
College of New Caledonia	76	3	10	4	1	15	0	109
Northern Lights College	15	2	0	0	3	16	1	37
Northwest Community College	67	3	4	3	6	18	1	102
	158	8	14	7	10	49	2	248
Interior/Kootenays								
College of the Rockies (EKCC)	50	1	58	5	1	13	0	128
Okanagan University College	404	36	50	75	35	48	0	648
Selkirk College	133	10	22	20	9	38	0	232
UC of the Cariboo	190	20	24	29	24	36	1	324
	777	67	154	129	69	135	1	1,332
Vancouver Island								
Camosun College	1,593	91	83	121	67	270	4	2,229
Malaspina University College	413	42	74	43	57	72	2	703
North Island College	107	11	11	7	7	40	1	184
	2,113	144	168	171	131	382	7	3,116
Total Non Lower Mainland	3,048	219	336	307	210	566	10	4,696
Lower Mainland								
Public								
BCIT	28	1	0	39	1	85	0	154
Capilano College	242	16	7	13	29	39	0	346
Douglas College	199	17	17	7	28	106	0	374
Kwantlen University College	254	10	12	20	25	61	1	383
UC of the Fraser Valley	95	4	8	21	4	29	2	163
Langara College	316	34	11	15	19	190	1	586
	1,134	82	55	115	106	510	4	2,006
Private								
Columbia College	93	25	0	15	0	2	0	135
Coquitlam College	59	11	0	2	0	3	0	75
	152	36	0	17	0	5	0	210
Total Lower Mainland	1,286	118	55	132	106	515	4	2,216
Total B.C. College Transfers	4,334	337	391	439	316	1,081	14	6,912
Total B.C. High School Entrants	7,397	2	0	572	727	53	1	8,752

Percentage Distribution

Non Lower Mainland								
Northern B.C.	63.7	3.2	5.6	2.8	4.0	19.8	0.8	100.0
Interior/Kootenays	58.3	5.0	11.6	9.7	5.2	10.1	0.1	100.0
Vancouver Island	67.8	4.6	5.4	5.5	4.2	12.3	0.2	100.0
Total Non Lower Mainland	64.9	4.7	7.2	6.5	4.5	12.1	0.2	100.0
Lower Mainland								
Public	56.5	4.1	2.7	5.7	5.3	25.4	0.2	100.0
Private	72.4	17.1	0.0	8.1	0.0	2.4	0.0	100.0
Total Lower Mainland	58.0	5.3	2.5	6.0	4.8	23.2	0.2	100.0
Grand Total College Transfers	62.7	4.9	5.7	6.4	4.6	15.6	0.2	100.0
High School Entrants	84.5	0.0	0.0	6.5	8.3	0.6	0.0	100.0

Table 5
B.C. College Transfers Admitted to UVic by Degree Expected
(1994/95 to 1998/99)

Degree Expected	# of Students	% of Students	Admission Average
Bachelor of Arts	2,135	30.9	73.2
Bachelor of Commerce	404	5.8	74.9
Bachelor of Education	357	5.2	76.0
Bachelor of Engineering	311	4.5	77.5
Bachelor of Fine Arts	159	2.3	76.0
Bachelor of Music	60	0.9	72.4
Bachelor of Science	1,123	16.2	73.3
Bachelor of Nursing	652	9.4	74.4
Bachelor of Social Work	82	1.2	77.4
Non-Degree	32	0.5	74.4
Arts & Science Undeclared	1,323	19.1	71.4
Human & Social Development Undeclared	203	2.9	74.4
Other	71	1.1	69.8
Total	6,912	100.0	73.5

Note: Excluded from the admission average column are college transfer students with no recorded post-secondary average. They may have no recorded average because of data entry omissions or errors, because they are Nursing or Law students whose averages aren't entered, or because of errors or omissions.

Students are not required to declare a degree program until third year. Most students start in Arts & Science at UVic, even if they eventually enter other Faculties.

Table 6
B.C. College Transfers Admitted To UVic by Program Area*
(1994/95 to 1998/99)

Region/College	Arts	Com- merce	Edu- cation	Engi- neering	Fine Arts	Music	Science
Non Lower Mainland							
Northern B.C.							
College of New Caledonia	40	4	8	4	1	0	24
Northern Lights College	9	2	0	0	2	0	4
Northwest Community College	30	5	4	2	3	0	20
	79	11	12	6	6	0	48
Interior/Kootenays							
College of the Rockies (EKCC)	15	1	58	5	1	0	23
Okanagan University College	191	50	50	54	24	2	136
Selkirk College	60	12	18	16	6	1	48
UC of the Cariboo	83	23	20	25	15	3	61
	349	86	146	100	46	6	268
Vancouver Island							
Camosun College	789	114	82	80	28	6	409
Malaspina University College	218	55	65	17	39	10	127
North Island College	55	13	11	6	5	0	19
	1,062	182	158	103	72	16	555
Total Non Lower Mainland	1,490	279	316	209	124	22	871
Lower Mainland							
Public							
BCIT	5	1	0	37	1	0	6
Capilano College	157	18	6	9	8	7	46
Douglas College	83	17	14	3	7	19	31
Kwantlen University College	127	10	11	18	12	7	49
UC of the Fraser Valley	51	5	7	18	2	1	24
Langara College	167	37	5	12	6	4	58
	590	88	43	97	36	38	214
Private							
Columbia College	36	27	0	5	0	0	27
Coquitlam College	19	12	0	1	0	0	11
	55	39	0	6	0	0	38
Total Lower Mainland	645	127	43	103	36	38	252
Total B.C. College Transfers	2,135	406	359	312	160	60	1,123
Percentage Distribution	30.9	5.9	5.2	4.5	2.3	0.9	16
Total B.C. High School Entrants	2,026	2	0	430	476	158	2,276
Percentage Distribution	23.1	0.0	0.0	4.9	5.4	1.8	26

*Note: Estimated based on Faculty and degree expected data.

Table 6 (Cont'd)
B.C. College Transfers Admitted To UVic by Program Area
(1994/95 to 1998/99)

Region/College	Nursing	Social Work	Arts & Science Unspecified	Human & Social Development	Other	Total
Non Lower Mainland						
Northern B.C.						
College of New Caledonia	3	1	15	4	5	109
Northern Lights College	2	4	3	9	2	37
Northwest Community College	1	6	19	9	3	102
	<u>6</u>	<u>11</u>	<u>37</u>	<u>22</u>	<u>10</u>	<u>248</u>
Interior/Kootenays						
College of the Rockies (EKCC)	5	3	13	4	0	128
Okanagan University College	21	8	94	11	7	648
Selkirk College	15	10	33	9	4	232
UC of the Cariboo	14	1	55	18	6	324
	<u>55</u>	<u>22</u>	<u>195</u>	<u>42</u>	<u>17</u>	<u>1,332</u>
Vancouver Island						
Camosun College	164	6	490	46	15	2,229
Malaspina University College	26	20	101	15	10	703
North Island College	24	8	35	6	2	184
	<u>214</u>	<u>34</u>	<u>626</u>	<u>67</u>	<u>27</u>	<u>3,116</u>
Total Non Lower Mainland	<u>275</u>	<u>67</u>	<u>858</u>	<u>131</u>	<u>54</u>	<u>4,696</u>
Lower Mainland						
Public						
BCIT	77	0	16	5	6	154
Capilano College	20	2	64	8	1	346
Douglas College	76	1	104	18	1	374
Kwantlen University College	41	2	93	10	3	383
UC of the Fraser Valley	10	6	29	8	2	163
Langara College	151	4	107	31	4	586
	<u>375</u>	<u>15</u>	<u>413</u>	<u>80</u>	<u>17</u>	<u>2,006</u>
Private						
Columbia College	1	0	38	1	0	135
Coquitlam College	1	0	30	1	0	75
	<u>2</u>	<u>0</u>	<u>68</u>	<u>2</u>	<u>0</u>	<u>210</u>
Total Lower Mainland	<u>377</u>	<u>15</u>	<u>481</u>	<u>82</u>	<u>17</u>	<u>2,216</u>
Total B.C. College Transfers	652	82	1,339	213	71	6,912
Percentage Distribution	9.4	1.2	19.4	3.1	1.0	100.0
Total B.C. High School Entrants	34	0	3,312	7	31	8,752
Percentage Distribution	0.4	0.0	37.8	0.1	0.4	100.0

Table 7
B.C. College Transfers Admitted to UVic by Age Interval
(1994/95 to 1998/99)

Region/College	<20	20-24	25-29	30-34	35-39	>39	Total	Average
Non Lower Mainland								
Northern B.C.								
College of New Caledonia	31	57	8	6	4	3	109	22.5
Northern Lights College	3	13	5	4	7	5	37	29.2
Northwest Community College	33	48	6	5	6	4	102	22.9
	67	118	19	15	17	12	248	23.7
Interior/Kootenays								
College of the Rockies (EKCC)	17	78	13	6	6	8	128	24.1
Okanagan University College	175	380	50	18	11	14	648	22.1
Selkirk College	72	103	21	7	10	19	232	23.7
UC of the Cariboo	78	196	22	8	7	13	324	22.6
	342	757	106	39	34	54	1,332	22.7
Vancouver Island								
Camosun College	217	1,385	351	142	56	78	2,229	23.8
Malaspina University College	117	422	72	30	30	32	703	23.5
North Island College	53	80	13	14	5	19	184	24.6
	387	1,887	436	186	91	129	3,116	23.8
Total Non Lower Mainland	796	2,762	561	240	142	195	4,696	23.5
Lower Mainland								
Public								
BCIT	3	52	31	31	15	22	154	29.4
Capilano College	72	206	48	10	4	6	346	22.5
Douglas College	16	230	57	32	20	19	374	25.1
Kwantlen University College	55	277	30	9	8	4	383	22.1
UC of the Fraser Valley	38	95	15	4	6	5	163	22.8
Langara College	36	359	109	32	27	23	586	24.6
	220	1,219	290	118	80	79	2,006	24.1
Private								
Columbia College	17	107	6	1	2	2	135	22.1
Coquitlam College	4	62	8	1	0	0	75	22.4
	21	169	14	2	2	2	210	22.2
Total Lower Mainland	241	1,388	304	120	82	81	2,216	23.9
Total B.C. College Transfers	1,037	4,150	865	360	224	276	6,912	23.6
Total B.C. High School Entrants	8,237	430	30	19	11	25	8,752	18.1

Percentage Distribution

Non Lower Mainland								
Nothern B.C.	27.0	47.6	7.7	6.0	6.9	4.8	100.0	
Interior/Kootenays	25.7	56.8	8.0	2.9	2.6	4.1	100.0	
Vancouver Island	12.4	60.6	14.0	6.0	2.9	4.1	100.0	
Total Non Lower Mainland	17.0	58.8	11.9	5.1	3.0	4.2	100.0	
Lower Mainland								
Public	11.0	60.8	14.5	5.9	4.0	3.9	100.0	
Private	10.0	80.5	6.7	1.0	1.0	1.0	100.0	
Total Lower Mainland	10.9	62.6	13.7	5.4	3.7	3.7	100.0	
Grand Total College Transfers	15.0	60.0	12.5	5.2	3.2	4.0	100.0	
Grand Total High School Entrants	94.1	4.9	0.3	0.2	0.1	0.3	100.0	

Table 8
B.C. College Transfers Admitted To UVic By Gender
(1994/95 to 1998/99)

Region/College	Male	Female	Total	Percentage	
				Male	Female
Non Lower Mainland					
Northern B.C.					
College of New Caledonia	48	61	109	44.0	56.0
Northern Lights College	11	26	37	29.7	70.3
Northwest Community College	<u>37</u>	<u>65</u>	<u>102</u>	<u>36.3</u>	<u>63.7</u>
	96	152	248	38.7	61.3
Interior/Kootenays					
College of the Rockies (EKCC)	35	93	128	27.3	72.7
Okanagan University College	312	336	648	48.1	51.9
Selkirk College	101	131	232	43.5	56.5
UC of the Cariboo	<u>136</u>	<u>188</u>	<u>324</u>	<u>42.0</u>	<u>58.0</u>
	584	748	1,332	43.8	56.2
Vancouver Island					
Camosun College	932	1,297	2,229	41.8	58.2
Malaspina University-College	284	419	703	40.4	59.6
North Island College	<u>62</u>	<u>122</u>	<u>184</u>	<u>33.7</u>	<u>66.3</u>
	1,278	1,838	3,116	41.0	59.0
Total Non Lower Mainland	1,958	2,738	4,696	41.7	58.3
Lower Mainland					
Public					
BCIT	55	99	154	35.7	64.3
Capilano College	155	191	346	44.8	55.2
Douglas College	111	263	374	29.7	70.3
Kwantlen University College	150	233	383	39.2	60.8
UC of the Fraser Valley	73	90	163	44.8	55.2
Langara College	<u>202</u>	<u>384</u>	<u>586</u>	<u>34.5</u>	<u>65.5</u>
	746	1,260	2,006	37.2	62.8
Private					
Columbia College	67	68	135	49.6	50.4
Coquitlam College	<u>44</u>	<u>31</u>	<u>75</u>	<u>58.7</u>	<u>41.3</u>
	111	99	210	52.9	47.1
Total Lower Mainland	857	1,359	2,216	38.7	61.3
Total B.C. College Transfers	2,815	4,097	6,912	40.7	59.3
Total B.C. High School Entrants	3,752	5,000	8,752	42.9	57.1

Table 9
B.C. College Transfers Admitted To UVic By Admission Average
(1994/95 to 1998/99)

Average	# of Students	% of Total
<60	17	0.2
60	74	1.1
61	65	0.9
62	76	1.1
63	115	1.7
64	128	1.9
65	165	2.4
66	175	2.5
67	251	3.6
68	308	4.5
69	340	4.9
70	431	6.2
71	408	5.9
72	404	5.8
73	432	6.3
74	382	5.5
75	393	5.7
76	419	6.1
77	306	4.4
78	309	4.5
79	264	3.8
80	271	3.9
81	214	3.1
82	175	2.5
83	159	2.3
84	112	1.6
85	88	1.3
>86	171	2.5
Not Available	260	3.8
Total	6,912	100
Median	73.2	
Mean	73.5	

Section B

ACADEMIC PERFORMANCE OF B.C. COLLEGE TRANSFER STUDENTS

Table 10
Academic Performance of B.C. College Transfers Admitted To UVic
(1994/95 to 1998/99)

Region/College	# of Admitted Students	Admission Average	1st Session GPA	# of Graduating Students	Graduating GPA	Cumulative GPA
Non Lower Mainland						
Northern B.C.						
College of New Caledonia	109	73.1	4.71	36	6.03	5.82
Northern Lights College	37	76.1	5.23	9	5.83	5.56
Northwest Community College	<u>102</u>	<u>73.7</u>	<u>4.07</u>	<u>28</u>	<u>5.71</u>	<u>5.48</u>
	248	73.8	4.52	73	5.88	5.66
Interior/Kootenays						
College of the Rockies (EKCC)	128	75.1	5.34	40	5.74	5.66
Okanagan University College	648	74.7	5.14	229	5.74	5.62
Selkirk College	232	75.2	4.84	65	6.10	5.90
UC of the Cariboo	<u>324</u>	<u>74.2</u>	<u>5.05</u>	<u>107</u>	<u>5.74</u>	<u>5.56</u>
	1,332	74.7	5.09	441	5.79	5.65
Vancouver Island						
Camosun College	2,229	73.7	4.78	655	5.82	5.63
Malaspina University College	703	74.6	4.84	237	5.90	5.74
North Island College	<u>184</u>	<u>75.6</u>	<u>5.35</u>	<u>57</u>	<u>6.05</u>	<u>5.89</u>
	3,116	74.0	4.83	949	5.85	5.67
Total Non Lower Mainland	4,696	74.2	4.88	1,463	5.84	5.67
Lower Mainland						
Public						
BCIT	154	75.9	5.58	32	6.48	6.23
Capilano College	346	71.5	5.04	127	5.74	5.55
Douglas College	374	71.9	4.85	112	5.45	5.29
Kwantlen University College	383	71.9	4.69	96	5.48	5.25
UC of the Fraser Valley	163	73.7	5.44	60	6.38	6.20
Langara College	<u>586</u>	<u>70.9</u>	<u>5.23</u>	<u>213</u>	<u>5.81</u>	<u>5.71</u>
	2,006	72.0	5.07	640	5.77	5.61
Private						
Columbia College	135	71.7	4.02	52	4.63	4.51
Coquitlam College	<u>75</u>	<u>70.6</u>	<u>3.78</u>	<u>23</u>	<u>4.23</u>	<u>4.33</u>
	210	71.3	3.93	75	4.51	4.45
Total Lower Mainland	2,216	71.9	4.96	715	5.64	5.49
Total B.C. College Transfers	6,912	73.5	4.91	2,178	5.77	5.61

Notes:

Graduating GPA = based on 300 and 400 level (and in Education, 700 level) courses acceptable within the degree program.

Cumulative GPA = based on all courses taken at UVic.

Table 11
Course Performance of B.C. College Transfers Admitted To UVic
(1994/95 to 1998/99)
For Selected Courses

Region/College	BIOC200			BIOL210			BIOL215		
	Admis- sion N	Avg. Cr Average	Cr Grade	Admis- sion N	Avg. Cr Average	Cr Grade	Admis- sion N	Avg. Cr Average	Cr Grade
Non Lower Mainland									
Northern B.C.									
College of New Caledonia	14	77.1	4.42	4	75.5	4.75	5	75.0	5.60
Northern Lights College	1			1			0		
Northwest Community College	10	74.1	3.10	1			12	71.3	4.50
	25	72.8	3.72	6	50.3	3.17	17	72.4	4.82
Interior/Kootenays									
College of the Rockies (EKCC)	9	72.7	3.55	6	71.6	4.16	4	72.5	4.50
Okanagan University College	37	75.3	4.05	5	79.6	6.00	32	74.8	5.75
Selkirk College	20	75.1	3.90	4	74.2	3.50	24	73.6	4.95
UC of the Cariboo	37	73.8	3.21	5	68.8	3.20	32	74.0	4.90
	103	74.5	3.68	20	73.4	4.25	92	74.1	5.19
Vancouver Island									
Camosun College	79	72.6	2.96	27	70.2	3.85	67	72.1	4.17
Malaspina University College	35	73.7	3.40	16	76.2	4.68	38	74.2	4.84
North Island College	11	76.3	4.00	1			6	77.6	3.83
	125	73.2	3.17	44	70.8	4.06	111	73.1	4.38
Total Non Lower Mainland	253	73.7	3.43	70	69.8	4.04	220	73.5	4.75
Lower Mainland									
Public									
BCIT	1			2			2		
Capilano College	5	70.8	4.20	3	72.6	4.33	12	71.0	4.25
Douglas College	9	68.3	3.33	3	77.0	4.00	11	70.3	3.72
Kwantlen University College	17	70.4	4.35	7	74.0	5.00	12	72.9	4.50
UC of the Fraser Valley	7	72.0	5.14	4	72.5	2.75	7	72.4	4.71
Langara College	13	66.1	2.15	6	68.6	3.50	14	67.1	3.21
	52	67.9	3.63	25	66.7	3.68	58	68.0	3.86
Private									
Columbia College	3	72.6	1.00	2			1		
Coquitlam College	1			0			0		
	4	54.5	0.75	2	0.0	0.00	1	0.0	0.00
Total Lower Mainland	56	66.9	3.43	27	61.8	3.41	59	66.9	3.79
Total B.C. College Transfers	309	72.5	3.43	97	67.6	3.86	279	72.1	4.55
Total B.C. High School Entrants	725	69.1	4.23	1112	76.5	4.18	815	73.3	4.51

Table 11 (Cont'd)
Course Performance of B.C. College Transfers Admitted To UVic
(1994/95 to 1998/99)
For Selected Courses

Region/College	BIOL220			BIOL225			BIOL230		
	Admis- sion N	Avg. Crs Average	Avg. Crs Grade	Admis- sion N	Avg. Crs Average	Avg. Crs Grade	Admis- sion N	Avg. Crs Average	Avg. Crs Grade
Non Lower Mainland									
Northern B.C.									
College of New Caledonia	3	76.6	5.33	10	75.3	3.70	10	73.5	5.50
Northern Lights College	1			0			0		
Northwest Community College	0			10	72.9	3.30	10	72.9	3.40
	4	57.5	4.00	20	74.1	3.50	20	73.2	4.45
Interior/Kootenays									
College of the Rockies (EKCC)	4	74.2	4.75	8	73.2	3.75	4	74.0	5.50
Okanagan University College	12	73.5	4.83	30	77.5	4.83	30	74.9	5.60
Selkirk College	10	73.0	4.00	17	75.5	4.64	20	73.8	5.70
UC of the Cariboo	5	69.0	5.40	31	73.8	4.00	25	72.9	5.08
	31	72.7	4.64	86	75.4	4.39	79	73.9	5.46
Vancouver Island									
Camosun College	49	72.0	3.32	88	72.4	3.78	66	72.2	4.34
Malaspina University College	17	76.2	4.82	31	74.0	3.93	32	73.3	5.03
North Island College	4	74.2	3.00	8	76.7	4.75	3	84.6	7.33
	70	73.1	3.67	127	73.1	3.88	101	72.9	4.65
Total Non Lower Mainland	105	72.4	3.97	233	74.0	4.04	200	73.4	4.95
Lower Mainland									
Public									
BCIT	2			2			1		
Capilano College	7	69.2	4.71	8	70.0	3.00	4	69.7	5.50
Douglas College	4	73.5	1.25	10	70.2	3.60	4	67.0	3.50
Kwantlen University College	12	69.9	4.58	19	71.9	4.42	9	70.4	5.55
UC of the Fraser Valley	4	72.7	4.00	9	71.7	4.00	4	73.5	4.50
Langara College	8	66.7	2.75	13	67.6	4.07	10	67.4	3.60
	37	66.0	3.54	61	68.1	3.82	32	67.1	4.37
Private									
Columbia College	1			2			1		
Coquitlam College	0			0			0		
	1	0.0	0.00	2	0.0	0.00	1	0.0	0.00
Total Lower Mainland	38	64.3	3.45	63	65.9	3.70	33	65.1	4.24
Total B.C. College Transfers	143	70.2	3.83	296	72.3	3.96	233	72.2	4.85
Total B.C. High School Entrants	1091	76.6	4.33	835	69.0	4.39	468	72.0	5.42

Table 11 (Cont'd)
Course Performance of B.C. College Transfers Admitted To UVic
(1994/95 to 1998/99)
For Selected Courses

Region/College	CHEM231			CHEM232			ECON245		
	Admis- sion N	Avg. Crs Average	Grade	Admis- sion N	Avg. Crs Average	Grade	Admis- sion N	Avg. Crs Average	Grade
Non Lower Mainland									
Northern B.C.									
College of New Caledonia	17	74.5	3.29	8	76.7	3.50	2		
Northern Lights College	2			0			2		
Northwest Community College	17	71.1	2.41	5	74.4	3.20	3	75.6	5.00
	36	68.8	2.69	13	75.8	3.38	7	32.4	2.14
Interior/Kootenays									
College of the Rockies (EKCC)	15	72.7	3.80	4	71.0	2.50	1		
Okanagan University College	46	75.1	3.97	16	73.8	4.18	21	69.6	5.19
Selkirk College	35	72.9	2.51	8	72.7	4.62	9	69.1	2.55
UC of the Cariboo	39	73.4	3.00	14	72.1	3.00	4	77.2	8.00
	135	73.8	3.29	42	72.8	3.71	35	68.4	4.68
Vancouver Island									
Camosun College	122	72.7	2.68	44	73.5	3.36	85	71.9	4.70
Malaspina University College	46	73.0	3.60	18	70.8	3.27	25	70.0	3.52
North Island College	14	75.2	3.21	5	80.6	5.80	1		
	182	73.0	2.95	67	73.3	3.52	111	70.8	4.39
Total Non Lower Mainland	353	72.8	3.06	122	73.4	3.57	153	68.5	4.36
Lower Mainland									
Public									
BCIT	1			0			2		
Capilano College	11	72.0	3.63	5	72.4	4.60	22	67.1	4.50
Douglas College	17	68.9	3.41	7	72.7	4.00	29	68.8	4.82
Kwantlen University College	23	70.9	4.69	10	68.1	3.40	33	69.7	4.63
UC of the Fraser Valley	9	70.5	4.22	4	72.7	7.50	5	71.0	4.60
Langara College	25	65.8	2.28	7	68.2	3.42	42	66.6	5.47
	86	68.3	3.50	33	70.3	4.21	133	67.1	4.84
Private									
Columbia College	9	70.1	2.22	1			37	70.5	5.62
Coquitlam College	3	71.0	3.00	0			22	67.3	3.63
	12	70.3	2.42	1	0.0	0.00	59	69.3	4.88
Total Lower Mainland	98	68.5	3.36	34	68.2	4.09	192	67.8	4.85
Total B.C. College Transfers	451	71.9	3.12	156	72.3	3.68	345	68.1	4.63
Total B.C. High School Entrants	1074	71.7	3.78	366	74.0	4.62	319	76.0	4.84

Table 11 (Cont'd)
Course Performance of B.C. College Transfers Admitted To UVic
(1994/95 to 1998/99)
For Selected Courses

Region/College	ENGL200			ENGL201			ENGL225		
	Admis- sion N	Avg. Crs Average	Avg. Crs Grade	Admis- sion N	Avg. Crs Average	Avg. Crs Grade	Admis- sion N	Avg. Crs Average	Avg. Crs Grade
Non Lower Mainland									
Northern B.C.									
College of New Caledonia	3	70.3	5.33	7	70.4	3.57	4	73.7	5.25
Northern Lights College	2			1			1		
Northwest Community College	1			5	67.8	2.40	3	79.3	6.33
	6	35.2	2.67	13	64.0	2.85	8	66.6	5.00
Interior/Kootenays									
College of the Rockies (EKCC)	0			2	77.0	5.00	0		
Okanagan University College	18	73.2	4.75	27	73.1	4.92	47	75.0	5.70
Selkirk College	3	80.3	6.00	6	74.8	6.00	15	75.6	5.86
UC of the Cariboo	2			12	74.5	5.16	18	74.1	5.66
	23	67.8	4.50	47	73.8	5.12	80	74.9	5.72
Vancouver Island									
Camosun College	25	73.5	4.88	60	73.2	4.83	120	75.2	5.08
Malaspina University College	12	73.8	4.58	16	74.7	3.25	54	75.3	5.53
North Island College	4	73.2	5.00	6	74.5	4.33	10	77.6	5.90
	41	73.6	4.80	82	73.6	4.49	184	75.4	5.26
Total Non Lower Mainland	70	68.4	4.52	142	72.8	4.55	272	75.0	5.39
Lower Mainland									
Public									
BCIT	0			0			1		
Capilano College	5	68.4	3.60	12	71.9	4.33	18	70.8	5.16
Douglas College	2	74.0	4.00	3	72.6	6.33	10	69.6	4.50
Kwantlen University College	7	70.6	4.42	12	71.8	4.50	15	72.8	5.93
UC of the Fraser Valley	5	75.4	6.20	7	71.0	4.71	3	69.3	6.00
Langara College	5	71.6	5.00	10	66.7	4.50	23	69.1	4.52
	24	71.6	4.71	44	70.6	4.61	70	69.4	4.98
Private									
Columbia College	0			0			16	71.2	4.37
Coquitlam College	0			0			9	72.0	4.11
	0			0			25	71.5	4.28
Total Lower Mainland	24	71.6	4.71	44	70.6	4.61	95	70.0	4.80
Total B.C. College Transfers	94	69.2	4.57	186	72.3	4.56	367	73.7	5.23
Total B.C. High School Entrants	256	0.0	5.28	300	74.6	4.93	275	69.0	5.99

Table 11 (Cont'd)
Course Performance of B.C. College Transfers Admitted To UVic
(1994/95 to 1998/99)
For Selected Courses

Region/College	E S 300A			MATH200			MATH201		
	Admis- sion N	Avg. Crs Average	Grade	Admis- sion N	Avg. Crs Average	Grade	Admis- sion N	Avg. Crs Average	Grade
Non Lower Mainland									
Northern B.C.									
College of New Caledonia	1			12	70.0	0.91	4	69.0	2.75
Northern Lights College	1			0			1		
Northwest Community College	4	70.5	4.25	5	67.2	0.00	5	73.0	0.20
	6	47.0	2.83	17	69.2	0.64	10	64.1	1.20
Interior/Kootenays									
College of the Rockies (EKCC)	1			11	77.2	2.90	12	76.8	4.75
Okanagan University College	25	74.3	5.76	80	77.9	2.81	92	77.3	4.06
Selkirk College	9	76.8	6.11	19	76.6	2.05	19	75.5	2.84
UC of the Cariboo	13	73.3	6.00	30	74.4	2.80	28	73.7	3.32
	48	73.0	5.77	140	76.9	2.71	151	76.4	3.82
Vancouver Island									
Camosun College	89	73.8	5.67	64	75.7	2.23	101	74.6	3.36
Malaspina University College	26	77.4	6.00	28	72.9	2.32	41	73.6	2.41
North Island College	4	79.2	6.25	9	76.1	2.44	9	78.6	3.44
	119	74.8	5.76	101	75.0	2.27	151	74.6	3.11
Total Non Lower Mainland	173	73.3	5.66	258	75.6	2.40	312	75.1	3.39
Lower Mainland									
Public									
BCIT	0			2			3	75.3	4.00
Capilano College	15	72.4	5.86	10	71.2	5.20	18	68.8	4.16
Douglas College	6	70.6	5.83	8	72.1	3.87	16	70.6	3.56
Kwantlen University College	18	69.8	5.38	16	68.5	3.31	25	70.5	4.16
UC of the Fraser Valley	5	74.0	6.00	14	74.4	2.71	17	74.1	4.94
Langara College	22	71.8	5.59	20	68.8	2.95	26	69.2	3.88
	66	71.4	5.65	70	68.6	3.33	105	70.6	4.12
Private									
Columbia College	0			11	71.6	2.63	27	71.7	4.18
Coquitlam College	0			3	74.3	1.00	11	69.0	3.72
	0			14	72.2	2.28	38	70.9	4.05
Total Lower Mainland	66	71.4	5.65	84	69.2	3.15	143	70.7	4.10
Total B.C. College Transfers	239	72.8	5.66	342	74.1	2.59	455	73.7	3.62
Total B.C. High School Entrants	174	0.0	6.15	572	77.1	3.25	702	72.8	4.24

Table 11 (Cont'd)
Course Performance of B.C. College Transfers Admitted To UVic
(1994/95 to 1998/99)
For Selected Courses

Region/College	STAT255			STAT260			PHIL331		
	Admis- sion N	Avg. Crs Average	Grade	Admis- sion N	Avg. Crs Average	Grade	Admis- sion N	Avg. Crs Average	Grade
Non Lower Mainland									
Northern B.C.									
College of New Caledonia	15	77.6	5.33	4	73.0	1.00	7	71.8	5.14
Northern Lights College	2			1			0		
Northwest Community College	19	71.8	2.89	1			5	73.4	5.40
	36	70.2	3.75	6	48.7	0.67	12	72.5	5.25
Interior/Kootenays									
College of the Rockies (EKCC)	11	74.3	4.45	3	75.6	4.66	0		
Okanagan University College	80	74.6	4.80	58	75.3	3.24	28	72.6	4.57
Selkirk College	34	74.4	3.05	24	75.5	2.70	4	75.7	4.25
UC of the Cariboo	33	73.5	3.72	18	72.6	2.66	8	76.8	5.00
	158	74.3	4.17	103	74.9	3.05	40	73.8	4.62
Vancouver Island									
Camosun College	130	73.0	3.47	77	73.4	2.16	73	73.0	4.75
Malaspina University College	50	72.6	3.84	24	75.8	2.25	15	73.9	5.26
North Island College	8	74.7	3.37	6	77.3	2.83	12	72.8	4.75
	188	73.0	3.56	107	74.2	2.22	100	73.1	4.83
Total Non Lower Mainland	382	73.3	3.83	216	73.8	2.57	152	73.2	4.81
Lower Mainland									
Public									
BCIT	0			2			5	75.6	5.60
Capilano College	14	68.5	3.57	10	70.6	3.60	19	70.7	4.42
Douglas College	13	70.5	1.53	15	66.8	1.33	9	79.7	5.88
Kwantlen University College	21	70.9	4.14	15	67.8	2.80	13	72.6	5.07
UC of the Fraser Valley	14	72.5	6.35	14	75.5	5.07	2		
Langara College	20	66.7	2.65	29	68.9	3.51	11	68.9	4.72
	82	69.7	3.64	85	68.0	3.18	59	70.2	4.79
Private									
Columbia College	7	73.2	2.71	23	71.3	2.65	0		
Coquitlam College	2			8	68.6	1.62	0		
	9	56.9	2.11	31	70.6	2.38	0		
Total Lower Mainland	91	68.4	3.49	116	68.7	2.97	59	70.2	4.79
Total B.C. College Transfers	473	72.3	3.77	332	72.0	2.71	211	72.4	4.80
Total B.C. High School Entrants	918	70.2	4.35	422	74.7	3.13	216	69.0	5.30

Table 11 (Cont'd)
Course Performance of B.C. College Transfers Admitted To UVic
(1994/95 to 1998/99)
For Selected Courses

Region/College	POLI240			PSYC201			PSYC210		
	Admis- sion N	Avg. Crs Average	Avg. Crs Grade	Admis- sion N	Avg. Crs Average	Avg. Crs Grade	Admis- sion N	Avg. Crs Average	Avg. Crs Grade
Non Lower Mainland									
Northern B.C.									
College of New Caledonia	2			8	71.5	5.50	7	72.4	4.00
Northern Lights College	0			3	80.3	5.33	4	77.7	3.25
Northwest Community College	4	75.0	1.75	15	73.4	3.66	13	74.1	3.61
	6	50.0	1.17	26	73.6	4.42	24	74.2	3.66
Interior/Kootenays									
College of the Rockies (EKCC)	2			9	71.1	5.44	12	69.7	3.00
Okanagan University College	17	70.9	4.64	39	72.3	5.02	50	73.5	4.64
Selkirk College	6	73.8	4.33	18	76.7	6.11	21	76.7	5.04
UC of the Cariboo	11	73.5	4.81	9	76.6	5.44	11	73.2	4.81
	36	68.2	4.38	75	73.7	5.38	94	73.7	4.54
Vancouver Island									
Camosun College	60	72.7	3.83	164	72.0	4.35	161	71.8	3.24
Malaspina University College	9	73.7	4.55	29	73.7	4.72	23	73.6	3.86
North Island College	4	72.2	3.75	23	74.3	4.43	20	75.1	4.10
	73	72.8	3.91	216	72.5	4.41	204	72.3	3.39
Total Non Lower Mainland	115	70.2	3.92	317	72.9	4.64	322	72.9	3.75
Lower Mainland									
Public									
BCIT	2			0			0		
Capilano College	9	68.2	3.88	27	71.9	5.33	30	71.6	4.36
Douglas College	5	69.2	3.60	16	71.1	4.37	17	68.7	3.47
Kwantlen University College	9	70.0	3.33	35	71.2	4.25	44	70.7	3.22
UC of the Fraser Valley	1			13	71.4	5.84	14	71.0	4.57
Langara College	17	71.3	4.35	22	68.4	3.86	31	68.3	4.19
	43	65.2	3.65	113	70.8	4.63	136	70.1	3.86
Private									
Columbia College	0			5	71.40	4	7	70.50	3.42
Coquitlam College	0			2	64.0	3.50	7	68.7	3.57
	0			7	69.3	3.86	14	69.6	3.50
Total Lower Mainland	43	65.2	3.65	120	70.7	4.59	150	70.1	3.83
Total B.C. College Transfers	158	68.8	3.84	437	72.3	4.63	472	72.0	3.77
Total B.C. High School Entrants	310	68.5	4.25	442	74.0	5.43	421	74.7	4.39

Table 11 (Cont'd)
Course Performance of B.C. College Transfers Admitted To UVic
(1994/95 to 1998/99)
For Selected Courses

	PSYC215A			PSYC330			PSYC331		
	Admis- sion N	Avg. Cr Average	Grade	Admis- sion N	Avg. Cr Average	Grade	Admis- sion N	Avg. Cr Average	Grade
Region/College									
Non Lower Mainland									
Northern B.C.									
College of New Caledonia	13	73.6	5.07	4	70.0	5.00	2		
Northern Lights College	3	76.0	4.00	1			3	76.0	7.33
Northwest Community College	17	73.9	3.82	6	73.8	4.33	4	68.5	4.75
	33	74.0	4.33	11	65.7	4.18	9	55.8	4.55
Interior/Kootenays									
College of the Rockies (EKCC)	14	70.5	4.07	6	71.5	4.83	5	74.2	6.20
Okanagan University College	55	73.0	4.92	37	73.0	6.16	39	71.3	6.02
Selkirk College	20	76.8	6.00	11	76.3	5.72	11	75.1	6.27
UC of the Cariboo	12	73.5	5.16	10	71.3	5.70	17	73.1	6.58
	101	73.5	5.04	64	73.2	5.89	72	72.5	6.20
Vancouver Island									
Camosun College	209	71.2	3.73	164	73.0	5.16	163	73.0	5.16
Malaspina University College	42	73.1	4.40	33	75.2	5.96	36	73.6	5.47
North Island College	28	74.1	4.03	12	75.8	5.08	23	73.9	5.26
	279	71.8	3.86	209	73.5	5.28	222	73.2	5.22
Total Non Lower Mainland	413	72.4	4.19	284	73.1	5.38	303	72.5	5.43
Lower Mainland									
Public									
BCIT	0			0			0		
Capilano College	40	70.8	4.82	24	71.7	6.04	28	72.2	6.46
Douglas College	22	70.4	3.81	13	69.8	5.15	12	68.1	4.83
Kwantlen University College	48	71.0	3.97	23	70.9	4.69	21	71.3	5.80
UC of the Fraser Valley	19	72.2	5.05	13	72.2	6.38	10	71.2	6.30
Langara College	38	67.2	4.02	30	66.5	4.63	26	67.6	5.26
	167	70.1	4.29	103	69.8	5.26	97	70.2	5.78
Private									
Columbia College	9	70.5	4.77	8	68.5	4.00	5	70.6	4.60
Coquitlam College	9	67.2	2.22	5	68.0	3.80	3	68.3	3.33
	18	68.9	3.50	13	68.3	3.92	8	69.7	4.12
Total Lower Mainland	185	70.0	4.21	116	69.7	5.11	105	70.1	5.65
Total B.C. College Transfers	598	71.6	4.19	400	72.1	5.30	408	71.9	5.49
Total B.C. High School Entrants	677	73.0	5.09	200	64.0	5.80	228	72.1	6.00

Table 11 (Cont'd)
Course Performance of B.C. College Transfers Admitted To UVic
(1994/95 to 1998/99)
For Selected Courses

	PSYC335			SOCI305A			COM 202		
	Admis- sion N	Avg. Crs Average	Avg. Crs Grade	Admis- sion N	Avg. Crs Average	Avg. Crs Grade	Admis- sion N	Avg. Crs Average	Avg. Crs Grade
Region/College									
Non Lower Mainland									
Northern B.C.									
College of New Caledonia	4	71.2	5.50	6	70.3	4.50	3	74.3	4.66
Northern Lights College	0			0			1		
Northwest Community College	4	70.5	3.00	8	71.2	3.62	4	77.5	4.50
	8	70.9	4.25	14	70.8	4.00	8	66.6	4.00
Interior/Kootenays									
College of the Rockies (EKCC)	2			6	80.1	6.66	0		
Okanagan University College	26	72.0	6.26	25	71.8	5.36	52	74.6	4.28
Selkirk College	11	77.0	6.18	4	75.7	5.00	12	73.5	3.91
UC of the Cariboo	9	74.7	5.44	16	72.4	6.37	11	74.2	4.81
	48	70.7	5.83	51	73.3	5.80	75	74.4	4.30
Vancouver Island									
Camosun College	117	72.5	4.89	137	72.5	5.65	86	74.6	3.80
Malaspina University College	27	72.3	5.14	17	74.8	5.94	35	74.1	4.37
North Island College	5	72.2	5.00	7	78.1	6.14	12	76.8	4.08
	149	72.5	4.94	161	73.0	5.70	133	74.7	3.98
Total Non Lower Mainland	205	72.0	5.12	226	72.9	5.62	216	74.3	4.09
Lower Mainland									
Public									
BCIT	0			1			1		
Capilano College	25	69.9	5.20	30	69.9	5.40	15	72.5	4.66
Douglas College	11	70.5	5.18	12	71.9	5.75	7	66.8	2.57
Kwantlen University College	22	71.1	5.04	22	69.0	5.40	10	73.1	4.40
UC of the Fraser Valley	9	72.7	6.55	9	71.7	6.66	6	69.8	4.00
Langara College	16	67.4	5.00	20	66.5	5.25	14	68.0	4.71
	83	70.1	5.26	94	68.7	5.48	53	69.0	4.19
Private									
Columbia College	8	70.2	5.12	0	0.0	0.00	13	70.6	3.30
Coquitlam College	4	69.0	4.00	2	69.5	4.00	4	74.0	3.00
	12	69.8	4.75	2	69.5	4.00	17	71.4	3.23
Total Lower Mainland	95	70.1	5.20	96	68.7	5.45	70	69.6	3.95
Total B.C. College Transfers	300	71.4	5.14	322	71.6	5.57	286	73.1	4.06
Total B.C. High School Entrants	165	75.0	6.11	199	64.0	5.96	315	78.0	4.88

Table 11 (Cont'd)
Course Performance of B.C. College Transfers Admitted To UVic
(1994/95 to 1998/99)
For Selected Courses

	COM 220			COM 240			COM 250		
	Admis- sion N	Avg. Cr Average	Grade	Admis- sion N	Avg. Cr Average	Grade	Admis- sion N	Avg. Cr Average	Grade
Region/College									
Non Lower Mainland									
Northern B.C.									
College of New Caledonia	2			4	73.7	4.50	4	73.7	5.25
Northern Lights College	2			2			2		
Northwest Community College	4	77.5	6.50	5	76.6	5.20	4	77.5	4.75
	8	38.8	3.25	11	61.6	4.00	10	60.5	4.00
Interior/Kootenays									
College of the Rockies (EKCC)	2			2			2		
Okanagan University College	58	74.2	5.68	56	74.4	4.25	56	74.3	4.50
Selkirk College	10	74.3	5.00	12	75.1	4.41	13	74.6	4.61
UC of the Cariboo	17	75.5	6.47	26	75.0	4.61	23	75.2	5.08
	87	72.8	5.63	96	73.1	4.28	94	73.0	4.56
Vancouver Island									
Camosun College	96	75.5	5.91	138	75.4	4.74	118	75.4	4.55
Malaspina University College	32	75.0	5.50	60	74.2	5.10	37	74.3	4.45
North Island College	13	77.7	5.23	11	77.6	5.09	12	77.7	4.33
	141	75.6	5.75	209	75.2	4.86	167	75.3	4.51
Total Non Lower Mainland	236	73.3	5.62	316	74.1	4.65	271	74.0	4.51
Lower Mainland									
Public									
BCIT	2			2			3	76.3	4.00
Capilano College	22	72.6	5.22	21	73.1	4.19	20	72.0	4.70
Douglas College	9	71.0	4.88	20	72.4	3.65	7	70.8	3.28
Kwantlen University College	11	71.3	5.72	21	73.2	5.09	18	72.5	5.33
UC of the Fraser Valley	6	67.8	5.50	8	70.7	3.25	6	70.6	5.33
Langara College	20	71.2	5.35	45	74.6	4.04	25	70.5	4.52
	70	69.3	5.17	117	72.2	4.07	79	71.6	4.68
Private									
Columbia College	19	71.7	5.00	22	71.5	3.59	23	71.3	3.56
Coquitlam College	18	73.8	4.38	14	72.5	3.85	15	73.1	3.20
	37	72.7	4.70	36	71.9	3.69	38	72.0	3.42
Total Lower Mainland	107	70.5	5.00	153	72.1	3.98	117	71.7	4.27
Total B.C. College Transfers	343	72.4	5.43	469	73.4	4.43	388	73.3	4.44
Total B.C. High School Entrants	355	0.0	6.25	326	0.0	5.46	346	0.0	5.30

Table 11 (Cont'd)
Course Performance of B.C. College Transfers Admitted To UVic
(1994/95 to 1998/99)
For Selected Courses

	COM 260			ENGR240			NURS330		
	Admis- sion N	Avg. Crs Average	Grade	Admis- sion N	Avg. Crs Average	Grade	Admis- sion N	Avg. Crs Average	Grade
Region/College									
Non Lower Mainland									
Northern B.C.									
College of New Caledonia	4	73.7	5.00	3	69.0	6.00	2		
Northern Lights College	2			0			1		
Northwest Community College	5	76.6	5.60	2			1		
	11	61.6	4.36	5	41.4	3.60	1	0.0	0.00
Interior/Kootenays									
College of the Rockies (EKCC)	1			6	80.5	5.66	3	78.0	6.66
Okanagan University College	53	75.0	4.43	45	78.4	5.84	2		
Selkirk College	13	74.6	4.46	20	78.9	6.00	7	72.2	4.71
UC of the Cariboo	21	75.4	5.42	24	76.8	5.25	2		
	88	74.2	4.62	95	78.2	5.71	14	52.8	3.78
Vancouver Island									
Camosun College	123	75.3	4.58	64	74.1	5.21	16	69.3	6.43
Malaspina University College	55	74.8	4.58	35	76.0	5.54	2		
North Island College	12	77.6	5.25	6	74.5	4.66	2		
	190	75.3	4.62	105	74.8	5.29	20	55.4	5.14
Total Non Lower Mainland	289	74.4	4.61	205	75.6	5.44	35	52.8	4.45
Lower Mainland									
Public									
BCIT	1			3	77.0	6.33	46	75.9	6.58
Capilano College	19	72.7	4.52	12	70.2	4.66	10	70.0	6.20
Douglas College	15	69.6	3.66	3	70.6	4.66	31	77.8	6.74
Kwantlen University College	17	73.4	5.05	14	71.1	5.28	11	77.1	6.00
UC of the Fraser Valley	7	69.2	5.00	20	76.3	6.00	6	71.4	6.33
Langara College	22	70.3	4.00	10	70.9	4.70	18	66.7	6.66
	81	70.4	4.32	62	72.8	5.32	122	74.4	6.54
Private									
Columbia College	20	71.1	3.35	8	71.2	3.87	0		
Coquitlam College	16	72.5	3.43	1			0		
	36	71.7	3.39	9	63.3	3.44	0		
Total Lower Mainland	117	70.8	4.03	71	71.6	5.08	122	74.4	6.54
Total B.C. College Transfers	406	73.4	4.44	276	74.5	5.35	157	69.6	6.07
Total B.C. High School Entrants	291	0.0	5.25	456	75.3	5.53	23	72.0	7.00

Table 11 (Cont'd)
Course Performance of B.C. College Transfers Admitted To UVic
(1994/95 to 1998/99)
For Selected Courses

<u>Region/College</u>	<u>NURS341</u>			<u>NURS350</u>		
	<u>Admis-</u>	<u>Avg.</u>		<u>Admis-</u>	<u>Avg.</u>	
	<u>sion</u>	<u>Crs</u>	<u>Grade</u>	<u>sion</u>	<u>Crs</u>	<u>Grade</u>
	<u>N</u>	<u>Average</u>	<u>Grade</u>	<u>N</u>	<u>Average</u>	<u>Grade</u>
Non Lower Mainland						
<u>Northern B.C.</u>						
College of New Caledonia	0			2		
Northern Lights College	2			2		
Northwest Community College	1			1		
	3	0.0	0.00	5	0.0	0.00
<u>Interior/Kootenays</u>						
College of the Rockies (EKCC)	2			3	76.0	7.00
Okanagan University College	10	76.6	7.90	10	76.6	6.20
Selkirk College	11	74.2	7.45	11	74.2	6.36
UC of the Cariboo	8	75.0	6.75	6	74.1	7.33
	31	70.4	6.93	30	75.2	6.56
<u>Vancouver Island</u>						
Camosun College	136	74.8	7.44	140	74.8	5.67
Malaspina University College	17	75.9	7.47	17	75.9	5.76
North Island College	21	77.9	8.04	21	77.9	6.23
	174	75.3	7.52	178	75.3	5.74
Total Non Lower Mainland	208	73.5	7.32	213	73.5	5.73
Lower Mainland						
<u>Public</u>						
BCIT	31	76.1	7.09	30	75.5	5.93
Capilano College	16	72.1	6.93	15	72.1	6.93
Douglas College	43	76.0	6.88	35	76.0	6.65
Kwantlen University College	31	74.6	6.61	32	74.6	6.40
UC of the Fraser Valley	6	71.4	7.00	6	71.4	5.66
Langara College	124	72.7	7.10	125	72.9	6.86
	251	73.9	6.99	243	73.8	6.63
<u>Private</u>						
Columbia College	1	79.0	8.00	1	79.0	9.00
Coquitlam College	1	73.0	7.00	1	73.0	7.00
	2	76.0	7.50	2	76.0	8.00
Total Lower Mainland	253	73.9	6.99	245	73.8	6.64
Total B.C. College Transfers	461	73.7	7.14	458	73.7	6.21
Total B.C. High School Entrants	25	72.0	7.60	22	70.5	7.09

Figure 2a

Academic Performance Comparisons of B.C. High School Entrants and B.C. College Transfers Admitted to UVic

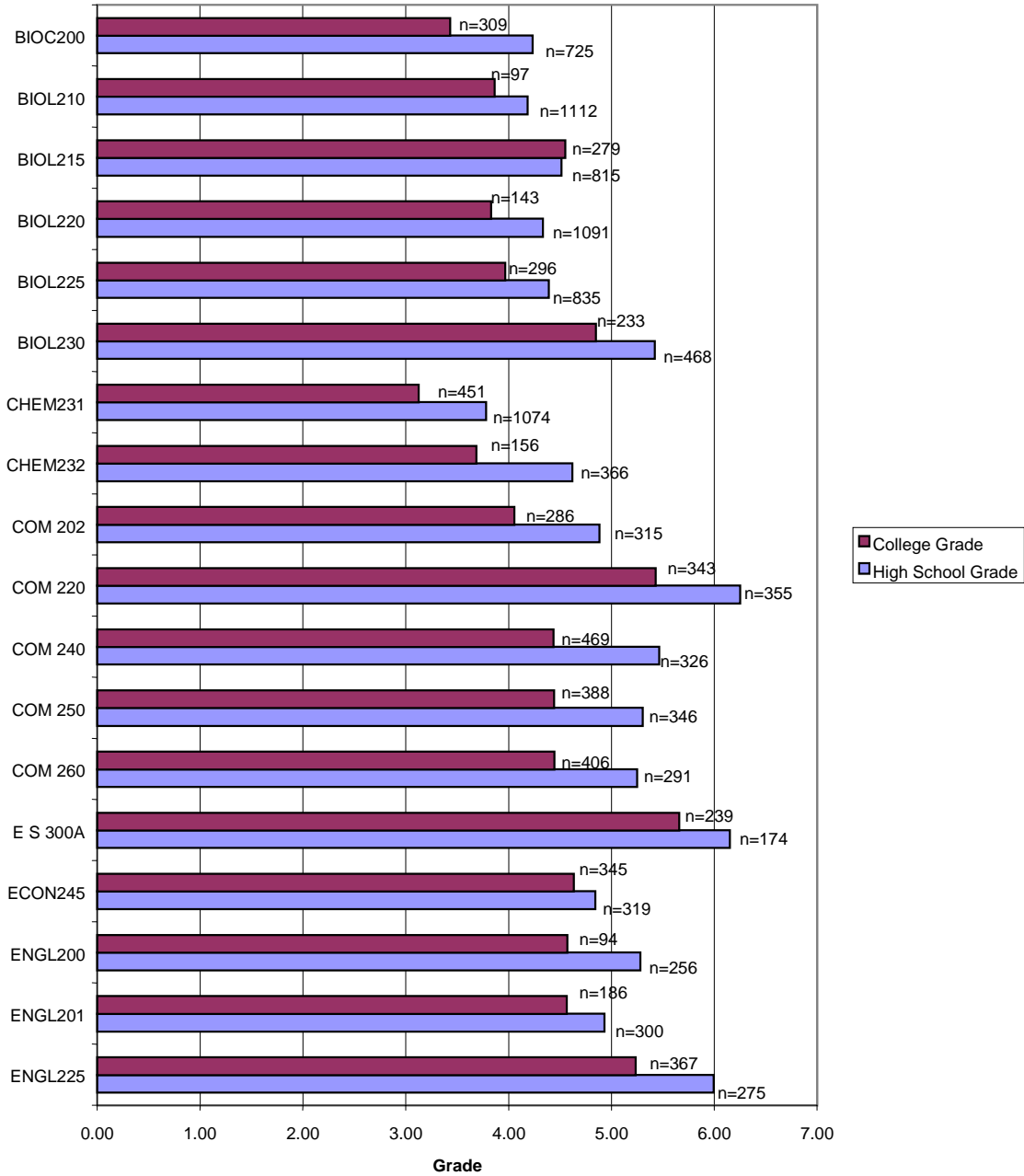


Figure 2b

Academic Performance Comparisons of B.C. High School Entrants and B.C. College Transfers Admitted to UVic

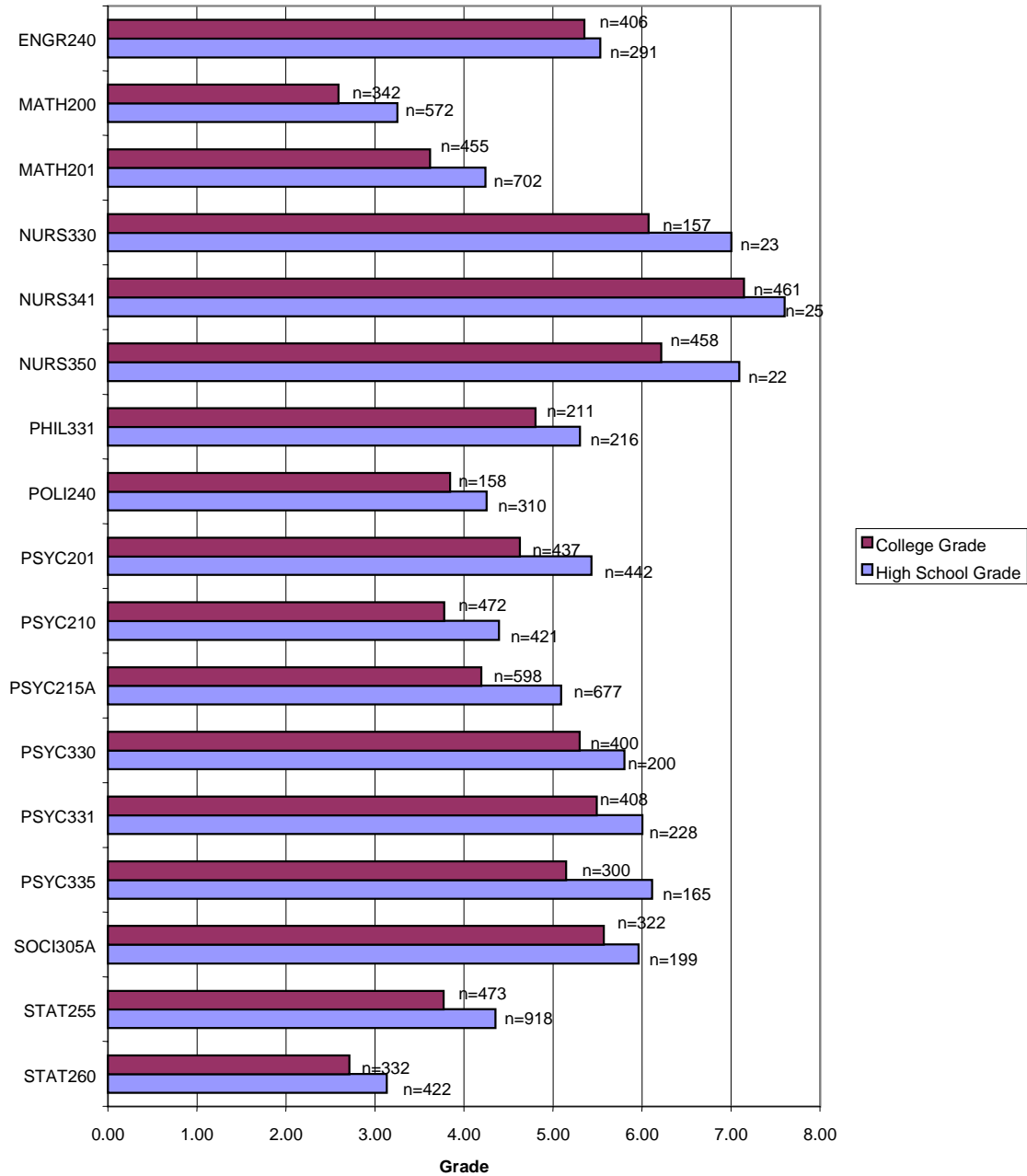


Table 12
Graduation Rates of B.C. College Transfers Admitted to UVic by Total Transfer Credit Units
(1994/95 - 1995/96)

Region/College	<u><15</u>		<u>15-17</u>		<u>17.5-19.5</u>		<u>20-22</u>	
	<u># of</u> <u>Students</u>	<u>%</u> <u>Grad</u>	<u># of</u> <u>Students</u>	<u>%</u> <u>Grad</u>	<u># of</u> <u>Students</u>	<u>%</u> <u>Grad</u>	<u># of</u> <u>Students</u>	<u>%</u> <u>Grad</u>
Non Lower Mainland								
Northern B.C.								
College of New Caledonia	9	55.6	8	87.5	3	66.7	5	40.0
Northern Lights College	4	25.0	1		2		0	
Northwest Community College	2	0.0	14	64.3	8	37.5	5	20.0
	15	40.0	23	69.6	13	38.5	10	30.0
Interior/Kootenays								
College of the Rockies (EKCC)	5	20.0	8	62.5	3	0.0	2	
Okanagan University College	36	58.3	56	46.4	23	56.5	11	63.6
Selkirk College	12	41.7	21	38.1	8	50.0	5	40.0
UC of the Cariboo	23	30.4	21	61.9	9	88.9	2	
	76	44.7	106	49.1	43	58.1	20	45.0
Vancouver Island								
Camosun College	195	37.4	150	48.0	117	49.6	60	43.3
Malaspina University-College	25	48.0	39	64.1	14	50.0	9	55.6
North Island College	13	61.5	14	57.1	3	100.0	3	66.7
	233	39.9	203	51.7	134	50.7	72	45.8
Total Non Lower Mainland	324	41.0	332	52.1	190	51.6	102	44.1
Lower Mainland								
Public								
BCIT	6	50.0	4	50.0	0		0	
Capilano College	26	30.8	35	45.7	25	60.0	6	83.3
Douglas College	16	31.3	14	14.3	14	50.0	9	66.7
Kwantlen University College	28	39.3	20	45.0	25	64.0	15	60.0
UC of the Fraser Valley	18	55.6	4	75.0	8	50.0	6	66.7
Langara College	27	44.4	31	51.6	37	43.2	12	33.3
	121	40.5	108	44.4	109	53.2	48	58.3
Private								
Columbia College	7	28.6	13	76.9	10	80.0	6	83.3
Coquitlam College	2		11	54.5	3	100.0	4	25.0
	9	22.2	24	66.7	13	84.6	10	60.0
Total Lower Mainland	130	39.2	132	48.5	122	56.6	58	58.6
Total B.C. College Transfers	454	40.5	464	51.1	312	53.5	160	49.4

Table 12 (Cont'd)
Graduation Rates of B.C. College Transfers Admitted to UVic by Total Transfer Credit Units
(1994/95 - 1995/96)

Region/College	22.5-24.5		25-27		≥27.5		Total	
	# of Students	% Grad	# of Students	% Grad	# of Students	% Grad	# of Students	% Grad
Non Lower Mainland								
Northern B.C.								
College of New Caledonia	8	75.0	8	75.0	6	66.7	47	68.1
Northern Lights College	0		0		5	80.0	12	50.0
Northwest Community College	5	40.0	6	50.0	6	66.7	46	47.8
	13	61.5	14	42.9	17	70.6	105	57.1
Interior/Kootenays								
College of the Rockies (EKCC)	4	75.0	5	60.0	37	48.6	64	48.4
Okanagan University College	26	61.5	16	50.0	108	78.7	276	63.8
Selkirk College	11	54.5	10	60.0	30	63.3	97	51.5
UC of the Cariboo	20	50.0	14	64.3	41	73.2	130	60.0
	61	57.4	45	57.8	216	70.4	567	59.1
Vancouver Island								
Camosun College	100	65.0	104	65.4	223	69.1	949	54.4
Malaspina University-College	34	64.7	34	61.8	122	71.3	277	64.6
North Island College	3	0.0	6	66.7	18	83.3	60	66.7
	137	63.5	144	64.6	363	70.5	1,286	57.2
Total Non Lower Mainland	211	61.6	203	61.6	596	70.5	1,958	57.7
Lower Mainland								
Public								
BCIT	0		12	91.7	19	36.8	41	56.1
Capilano College	17	58.8	16	81.3	44	77.3	169	59.8
Douglas College	15	86.7	14	35.7	57	61.4	139	52.5
Kwantlen University College	17	29.4	8	50.0	32	53.1	145	49.0
UC of the Fraser Valley	11	72.7	7	100.0	18	66.7	72	66.7
Langara College	28	57.1	16	62.5	80	66.3	231	55.0
	88	59.1	73	68.5	250	63.2	797	55.6
Private								
Columbia College	11	72.7	3	100.0	5	80.0	55	72.7
Coquitlam College	6	50.0	1		4	75.0	31	58.1
	17	64.7	4	75.0	9	77.8	86	67.4
Total Lower Mainland	105	60.0	77	68.8	259	63.7	883	56.7
Total B.C. College Transfers	316	61.1	280	63.6	855	68.4	2,841	57.4

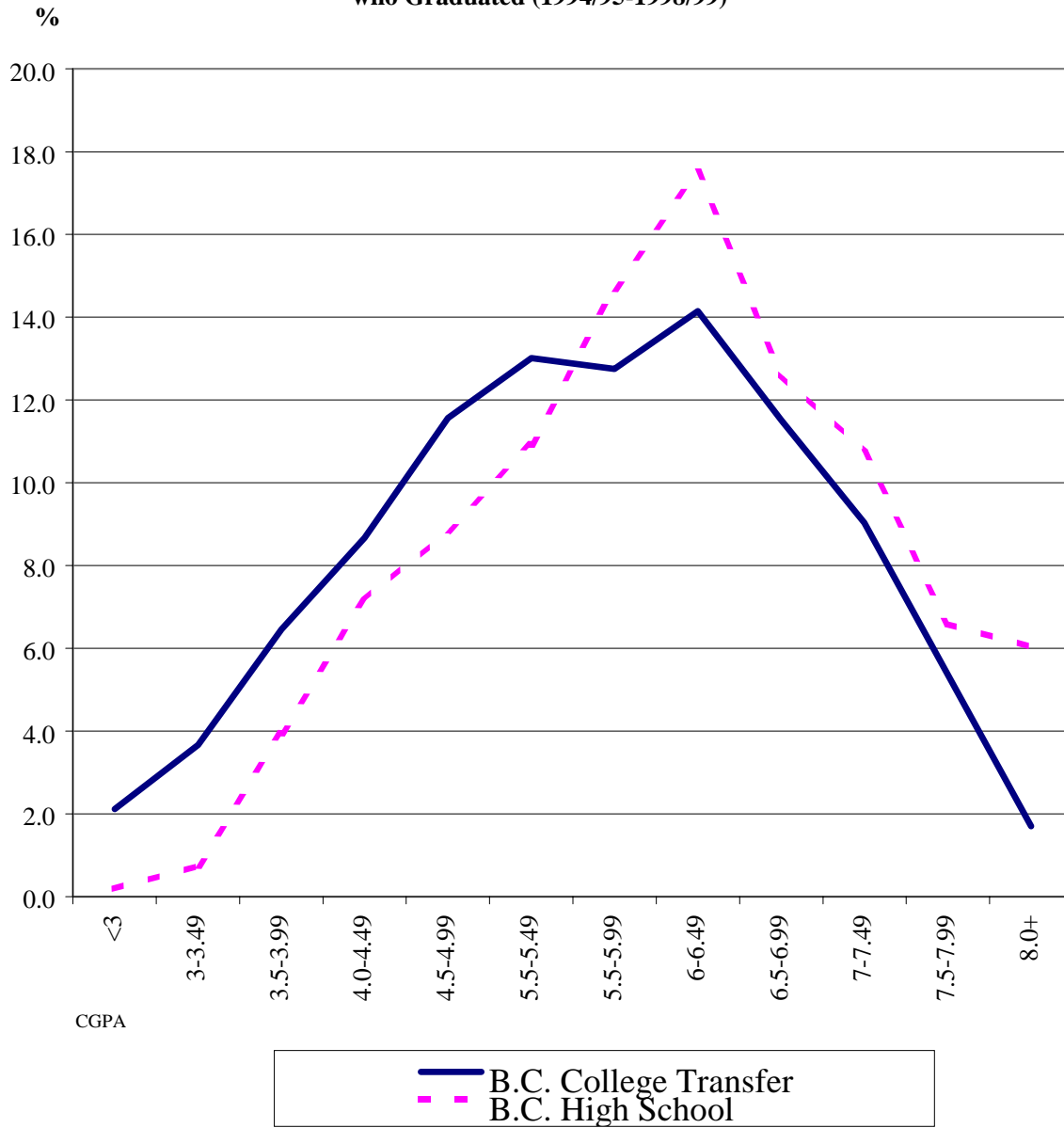
Table 13
Cumulative UVic GPA of B.C. College Transfers Admitted to UVic at time of Graduation
(1994/95 to 1995/96)

Region/College	<u><3</u>	<u>3-3.49</u>	<u>3.5-3.99</u>	<u>4.0-4.49</u>	<u>4.5-4.99</u>	<u>5.5-5.49</u>	<u>5.5-5.99</u>
Non Lower Mainland							
Northern B.C.							
College of New Caledonia	0	0	3	4	0	6	7
Northern Lights College	0	1	0	2	2	0	0
Northwest Community College	<u>3</u>	<u>1</u>	<u>0</u>	<u>3</u>	<u>6</u>	<u>2</u>	<u>1</u>
	3	2	3	9	8	8	8
Interior/Kootenays							
College of the Rockies (EKCC)	2	3	1	3	4	2	4
Okanagan University College	2	9	12	21	25	33	34
Selkirk College	0	1	5	3	4	12	7
UC of the Cariboo	<u>1</u>	<u>6</u>	<u>6</u>	<u>11</u>	<u>13</u>	<u>13</u>	<u>14</u>
	5	19	24	38	46	60	59
Vancouver Island							
Camosun College	20	16	43	50	71	83	86
Malaspina University College	2	6	11	18	25	42	31
North Island College	<u>1</u>	<u>1</u>	<u>4</u>	<u>5</u>	<u>2</u>	<u>7</u>	<u>9</u>
	23	23	58	73	98	132	126
Total Non Lower Mainland	31	44	85	120	152	200	193
Lower Mainland							
Public							
BCIT	0	0	1	2	4	3	3
Capilano College	1	3	15	14	12	15	19
Douglas College	5	6	13	8	13	12	14
Kwantlen University College	3	5	10	11	13	15	10
UC of the Fraser Valley	1	1	0	3	8	6	4
Langara College	<u>1</u>	<u>13</u>	<u>12</u>	<u>21</u>	<u>27</u>	<u>23</u>	<u>19</u>
	11	28	51	59	77	74	69
Private							
Columbia College	3	5	9	10	10	6	2
Coquitlam College	<u>1</u>	<u>5</u>	<u>6</u>	<u>1</u>	<u>3</u>	<u>4</u>	<u>1</u>
	4	10	15	11	13	10	3
Total Lower Mainland	15	38	66	70	90	84	72
Total B.C. College Transfers	46	82	151	190	242	284	265
Total B.C. High School Entrants	6	11	26	59	87	102	104

Table 13 (Cont'd)
Cumulative UVic GPA of B.C. College Transfers Admitted to UVic at Time of Graduation
(1994/95 to 1995/96)

Region/College	6-6.49	6.5-6.99	7-7.49	7.5-7.99	8.0+	# of Students	Cumulative GPA
Non Lower Mainland							
Northern B.C.							
College of New Caledonia	6	4	2	3	1	36	5.91
Northern Lights College	1	0	1	2	0	9	4.43
Northwest Community College	1	6	2	1	2	28	5.90
	8	10	5	6	3	73	5.72
Interior/Kootenays							
College of the Rockies (EKCC)	7	9	4	1	0	40	5.68
Okanagan University College	35	22	22	11	3	229	5.63
Selkirk College	12	8	8	3	2	65	5.75
UC of the Cariboo	13	17	6	6	1	107	5.70
	67	56	40	21	6	441	5.67
Vancouver Island							
Camosun College	95	80	71	32	8	655	5.62
Malaspina University College	38	27	20	13	4	237	5.62
North Island College	5	11	7	2	3	57	5.76
	138	118	98	47	15	949	5.63
Total Non Lower Mainland	213	184	143	74	24	1,463	5.65
Lower Mainland							
Public							
BCIT	2	6	5	5	1	32	6.06
Capilano College	13	15	12	7	1	127	5.42
Douglas College	21	10	5	5	0	112	5.34
Kwantlen University College	8	9	6	6	0	96	5.38
UC of the Fraser Valley	6	12	12	2	5	60	6.08
Langara College	26	17	31	16	7	213	5.83
	76	69	71	41	14	640	5.63
Private							
Columbia College	4	3	0	0	0	52	4.26
Coquitlam College	1	1	0	0	0	23	4.48
	5	4	0	0	0	75	4.33
Total Lower Mainland	81	73	71	41	14	715	5.49
Total B.C. College Transfers	294	257	214	115	38	2,178	5.60
Total B.C. High School Entrants	90	81	57	33	20	676	5.75

Figure 3
Cumulative UVic GPA Comparison
of B.C. High School Entrants and B.C. College Transfers Admitted to UVic
who Graduated (1994/95-1998/99)



Source: Table 13

Section C

PROFILE OF B.C. COLLEGE TRANSFER STUDENTS WHO GRADUATED

Table 14
Academic Performance of B.C. College Transfers Admitted to UVic Who Graduated
(admitted and graduated between 1994/95 and 1998/99)

Region/College	# of Students	Admission Average	1st Session GPA	Graduating GPA	Cumulative GPA
Non Lower Mainland					
Northern B.C.					
College of New Caledonia	36	74.9	5.43	6.03	5.82
Northern Lights College	9	79.4	5.06	5.83	5.56
Northwest Community College	28	74.7	5.10	5.71	5.48
	73	75.4	5.26	5.88	5.66
Interior/Kootenays					
College of the Rockies (EKCC)	40	73.5	5.33	5.74	5.66
Okanagan University College	229	74.2	5.32	5.74	5.62
Selkirk College	65	75.6	5.62	6.10	5.90
UC of the Cariboo	107	74.3	5.20	5.74	5.56
	441	74.4	5.34	5.79	5.65
Vancouver Island					
Camosun College	655	74.5	5.24	5.82	5.63
Malaspina University College	237	75.7	5.31	5.90	5.74
North Island College	57	76.5	5.52	6.05	5.89
	949	74.9	5.27	5.85	5.67
Total Non Lower Mainland	1,463	74.8	5.29	5.84	5.67
Lower Mainland					
Public					
BCIT	32	76.3	5.89	6.48	6.23
Capilano College	127	71.8	5.26	5.74	5.55
Douglas College	112	71.5	4.98	5.45	5.29
Kwantlen University College	96	71.4	4.94	5.48	5.25
UC of the Fraser Valley	60	74.1	5.82	6.38	6.20
Langara College	213	70.6	5.44	5.81	5.71
	640	71.7	5.31	5.77	5.61
Private					
Columbia College	52	69.7	3.87	4.63	4.51
Coquitlam College	23	69.6	4.35	4.23	4.33
	75	69.7	4.02	4.51	4.45
Total Lower Mainland	715	71.5	5.17	5.64	5.49
Total B.C. College Transfers	2,178	73.7	5.26	5.77	5.61

Table 15
Graduation Area of B.C. College Transfers Admitted to UVic
(1994/95 to 1998/99)

Region/College	PACI	EDUC	ANTH	LING	COM	BIOL	NURS	S W	ENGN	CSC	CYC
Non Lower Mainland											
Northern B.C.											
College of New Caledonia	0	0	0	1	3	6	0	1	1	0	2
Northern Lights College	1	0	0	0	0	0	1	1	0	0	0
Northwest Community College	0	3	0	1	4	3	1	5	0	0	0
	1	3	0	2	7	9	2	7	1	0	2
Interior/Kootenays											
College of the Rockies (EKCC)	0	17	0	0	0	5	1	1	0	1	0
Okanagan University College	4	20	4	3	28	21	7	5	5	6	4
Selkirk College	0	7	1	3	4	3	8	4	1	2	0
UC of the Cariboo	0	4	1	1	10	8	3	7	4	2	0
	4	48	6	7	42	37	19	17	10	11	4
Vancouver Island											
Camosun College	13	33	25	12	60	37	62	27	17	12	22
Malaspina University College	1	17	6	4	27	12	6	15	2	8	3
North Island College	0	4	1	1	2	3	10	4	0	1	2
	14	54	32	17	89	52	78	46	19	21	27
Total Non Lower Mainland	19	105	38	26	138	98	99	70	30	32	33
Lower Mainland											
Public											
BCIT	0	0	0	0	1	0	12	0	17	0	0
Capilano College	0	4	2	0	6	4	10	5	2	2	4
Douglas College	3	11	1	1	9	5	10	4	1	2	2
Kwantlen University College	2	7	1	2	4	5	8	3	2	1	1
UC of the Fraser Valley	1	4	1	0	5	1	5	9	3	2	3
Langara College	7	6	4	2	20	0	62	8	4	3	2
	13	32	9	5	45	15	107	29	29	10	12
Private											
Columbia College	1	0	1	0	7	1	0	0	0	5	0
Coquitlam College	0	0	0	0	7	0	1	0	0	0	0
	1	0	1	0	14	1	1	0	0	5	0
Total Lower Mainland	14	32	10	5	59	16	108	29	29	15	12
Total B.C. College Transfers	33	137	48	31	197	114	207	99	59	47	45
Total B.C. High School Entrants	15	33	11	15	46	62	13	3	17	7	10

PACI - Pacific & Asian Studies, EDUC - Education, ANTH - Anthropology, LING - Linguistics, COM - Commerce, BIOL - Biology, NURS - Nursing, S W - Social Work, ENGN - Engineering, CSC - Computer Science, CYC - Child & Youth Care

Table 15 (Cont'd)
Graduation Area of B.C. College Transfers Admitted to UVic
(1994/95 to 1998/99)

Region/College	VART	ECON	ENGL	GEOG	H A	HIST	P E	POLI	PSYC	SOCI	OTH	# of Students
Non Lower Mainland												
Northern B.C.												
College of New Caledonia	0	0	4	2	0	6	1	0	1	0	8	36
Northern Lights College	0	0	0	1	1	0	0	0	2	0	2	9
Northwest Community College	0	0	3	1	0	0	0	0	4	1	2	28
	0	0	7	4	1	6	1	0	7	1	12	73
Interior/Kootenays												
College of the Rockies (EKCC)	0	1	3	0	0	2	1	0	4	1	3	40
Okanagan University College	8	6	14	8	6	9	4	9	26	5	27	229
Selkirk College	0	1	9	2	0	3	0	1	8	1	7	65
UC of the Cariboo	5	6	12	3	1	5	7	4	7	4	13	107
	13	14	38	13	7	19	12	14	45	11	50	441
Vancouver Island												
Camosun College	3	25	49	44	7	35	5	16	75	16	60	655
Malaspina University College	21	2	18	10	3	15	14	6	21	3	23	237
North Island College	2	0	7	2	0	5	1	0	6	1	5	57
	26	27	74	56	10	55	20	22	102	20	88	949
Total Non Lower Mainland	39	41	119	73	18	80	33	36	154	32	150	1,463
Lower Mainland												
Public												
BCIT	0	1	0	0	0	0	0	1	0	0	0	32
Capilano College	0	10	17	9	8	7	1	4	17	2	13	127
Douglas College	0	16	3	4	1	2	2	1	8	3	23	112
Kwantlen University College	1	13	6	6	1	9	0	0	12	4	8	96
UC of the Fraser Valley	0	0	5	4	0	3	0	0	9	0	5	60
Langara College	1	24	4	20	4	5	3	8	14	4	8	213
	2	64	35	43	14	26	6	14	60	13	57	640
Private												
Columbia College	0	32	0	0	0	0	0	0	3	0	2	52
Coquitlam College	1	10	0	0	0	0	0	0	2	0	2	23
	1	42	0	0	0	0	0	0	5	0	4	75
Total Lower Mainland	3	106	35	43	14	26	6	14	65	13	61	715
Total B.C. College Transfers	42	147	154	116	32	106	39	50	219	45	211	2,178
Total B.C. High School Entrants	23	33	49	36	12	33	1	30	65	19	143	676

VART - Visual Arts, ECON - Economics, ENGL - English, GEOG - Geography, H A - History in Art, HIST - History
P E - Physical Education, POLI - Political Science, PSYC - Psychology, SOCI - Sociology, OTH - Other

Table 16
Credentials Awarded to B.C. College Transfers Admitted to UVic
(1994/95 to 1998/99)

Region/College	# of												
	Students	BA	BCOM	BED	BENG	BFA	BMUS	BSC	BSN	BSW	CERT	DIPL	LLB
Non Lower Mainland													
Northern B.C.													
College of New Caledonia	36	15	3	2	1	0	0	14	0	1	0	0	0
Northern Lights College	9	3	0	0	0	0	0	3	1	1	0	0	1
Northwest Community College	28	8	4	3	0	1	0	5	1	5	1	0	0
	73	26	7	5	1	1	0	22	2	7	1	0	1
Interior/Kootenays													
College of the Rockies (EKCC)	40	7	0	21	0	0	0	10	1	1	0	0	0
Okanagan University College	229	101	28	23	5	8	2	49	7	5	1	0	0
Selkirk College	65	29	4	6	1	0	1	11	8	4	0	1	0
UC of the Cariboo	107	42	10	11	4	6	0	23	3	7	0	0	1
	441	179	42	61	10	14	3	93	19	17	1	1	1
Vancouver Island													
Camosun College	655	298	60	42	17	4	1	140	62	27	2	2	0
Malaspina University College	237	90	27	27	2	23	7	38	6	15	1	1	0
North Island College	57	24	2	6	0	2	0	8	10	4	0	0	1
	949	412	89	75	19	29	8	186	78	46	3	3	1
Total Non Lower Mainland	1,463	617	138	141	30	44	11	301	99	70	5	4	3
Lower Mainland													
Public													
BCIT	32	1	1	0	17	0	0	1	12	0	0	0	0
Capilano College	127	78	6	7	2	3	3	13	10	5	0	0	0
Douglas College	112	50	9	6	1	4	12	15	10	4	1	0	0
Kwantlen University College	96	53	4	5	2	2	3	16	8	3	0	0	0
UC of the Fraser Valley	60	26	5	4	3	2	0	6	5	9	0	0	0
Langara College	213	89	20	7	4	1	2	19	62	8	0	0	1
	640	297	45	29	29	12	20	70	107	29	1	0	1
Private													
Columbia College	52	35	7	0	0	0	0	10	0	0	0	0	0
Coquitlam College	23	12	7	0	0	1	0	2	1	0	0	0	0
	75	47	14	0	0	1	0	12	1	0	0	0	0
Total Lower Mainland	715	344	59	29	29	13	20	82	108	29	1	0	1
Total B.C. College Transfers	2,178	961	197	170	59	57	31	383	207	99	6	4	4
Total B.C. High School Entrants	676	302	46	20	17	52	34	187	13	3	2	0	0

Percentage Distribution													
Non Lower Mainland													
Nothern B.C.	100.0	35.6	9.6	6.8	1.4	1.4	0.0	30.1	2.7	9.6	1.4	0.0	1.4
Interior/Kootenays	100.0	40.6	9.5	13.8	2.3	3.2	0.7	21.1	4.3	3.9	0.2	0.2	0.2
Vancouver Island	100.0	43.4	9.4	7.9	2.0	3.1	0.8	19.6	8.2	4.8	0.3	0.3	0.1
Total Non Lower Mainland	100.0	42.2	9.4	9.6	2.1	3.0	0.8	20.6	6.8	4.8	0.3	0.3	0.2
Lower Mainland													
Public	100.0	46.4	7.0	4.5	4.5	1.9	3.1	10.9	16.7	4.5	0.2	0.0	0.2
Private	100.0	62.7	18.7	0.0	0.0	1.3	0.0	16.0	1.3	0.0	0.0	0.0	0.0
Total Lower Mainland	100.0	48.1	8.3	4.1	4.1	1.8	2.8	11.5	15.1	4.1	0.1	0.0	0.1
Grand Total	100.0	44.1	9.0	7.8	2.7	2.6	1.4	17.6	9.5	4.5	0.3	0.2	0.2

BA - Bachelor of Arts, BCOM - Bachelor of Commerce, BED - Bachelor of Education, BENG - Bachelor of Engineering, BFA - Bachelor of Fine Arts, BMUS - Bachelor of Music, BSC - Bachelor of Science, BSN - Bachelor of Science in Nursing, BSW - Bachelor of Social Work
 CERT - Certificate Programs , DIPL - Diploma Programs , LLB - Law

Table 17
Average Years to Credential for B.C. College Transfers who have Graduated
Admitted to UVic by Credential Awarded
(1994/95 to 1998/99)

	# of													
	Students	BA	BCOM	BED	BENG	BFA	BMUS	BSC	BSN	BSW	CERT	DIPL	LLB	Total
Northern B.C.														
College of New Caledonia	36	2.8	3.2	3.7	4.7			3.6		2.1				3.2
Northern Lights College	9	3.1						3.8	2.7	1.7			3.7	3.2
Northwest Community College	28	2.8	3.5	3.7		3.7		3.1	2.4	2.7	1.7			3.0
	73	2.8	3.4	3.7	4.7	4.0		3.5	2.6	2.5	1.7		3.7	3.1
Interior/Kootenays														
College of the Rockies (EKCC)	40	2.9	3.3	2.9				3.3	4.4	2.1				3.0
Okanagan University College	229	2.6	3.4	3.2	3.9	2.3	3.7	2.8	2.1	2.1	1.7			2.8
Selkirk College	65	2.7	3.1	3.6	4.2		3.7	3.1	2.3	2.1		2.4		2.8
UC of the Cariboo	107	2.3	3.2	3.6	3.9	2.4		3.1	2.6	2.7			2.7	2.8
	441	2.6	3.3	3.2	3.9	2.3	3.7	3.0	2.4	2.3	1.7	2.4	2.7	2.8
Vancouver Island														
Camosun College	655	2.9	3.0	3.7	2.9	3.2	3.7	3.1	2.0	2.8	1.9	2.9		2.9
Malaspina University College	237	2.3	3.4	3.3	3.7	2.2	3.0	3.2	1.8	1.9	1.7	4.1		2.6
North Island College	57	2.7	2.7	3.3		3.7		3.0	2.1	2.4			3.2	2.8
	949	2.8	3.1	3.5	3.0	2.4	3.1	3.1	2.0	2.5	1.8	3.3	3.2	2.8
Total Non Lower Mainland	1,463	2.7	3.2	3.4	3.4	2.4	3.3	3.1	2.1	2.4	1.8	3.1	3.2	2.8
Public														
BCIT	32	3.7	3.2		3.0			1.7	2.6					2.8
Capilano College	127	2.7	2.5	3.7	3.5	2.8	2.8	2.9	1.8	2.7				2.7
Douglas College	112	2.6	3.0	3.1	3.4	2.6	2.7	3.0	2.0	2.7	1.7			2.6
Kwantlen University College	96	2.8	3.7	3.7	3.7	2.7	2.3	3.1	2.0	2.9				2.8
UC of the Fraser Valley	60	2.8	2.7	3.5	3.7	2.9		3.1	2.2	2.1				2.8
Langara College	213	2.6	3.1	3.9	3.7	1.7	2.2	3.2	1.8	2.7			2.7	2.5
	640	2.7	3.0	3.6	3.3	2.6	2.6	3.0	1.9	2.5	1.7		2.7	2.6
Private														
Columbia College	52	2.4	3.0					2.9						2.6
Coquitlam College	23	2.7	3.1			3.2		2.7	1.8					2.8
	75	2.5	3.1			3		2.9	1.8					2.7
Total Lower Mainland	715	2.7	3.0	3.6	3.3	2.7	2.6	3.0	1.9	2.5			2.7	2.6
Total B.C. College Transfers	2,178	2.7	3.1	3.4	3.3	2.5	2.8	3.1	2.0	2.5	1.8	3.1	3.1	2.8

BA - Bachelor of Arts, BCOM - Bachelor of Commerce, BED - Bachelor of Education, BENG - Bachelor of Engineering,
 BFA - Bachelor of Fine Arts, BMUS - Bachelor of Music, BSC - Bachelor of Science, BSN - Bachelor Science in Nursing,
 BSW - Bachelor of Social Work, CERT - Certificate Programs, DIPL - Diploma Programs, LLB - Law.

Section D

PROFILE OF STUDENTS WITH COLLEGE EXPERIENCE

Table 18
Students with College Experience Admitted to UVic by Year of Admission
(Excludes College Transfer Students)
(1994/95 to 1998/99)

Region/College	1994/95	1995/96	1996/97	1997/98	1998/99	Total
Non Lower Mainland						
Northern B.C.						
College of New Caledonia	20	13	14	7	5	59
Northern Lights College	3	2	2	2	6	15
Northwest Community College	<u>5</u>	<u>3</u>	<u>12</u>	<u>5</u>	<u>2</u>	<u>27</u>
	28	18	28	14	13	101
Interior/Kootenays						
College of the Rockies (EKCC)	5	4	8	1	7	25
Okanagan University College	74	79	70	60	66	349
Selkirk College	14	11	7	6	7	45
UC of the Cariboo	<u>38</u>	<u>37</u>	<u>50</u>	<u>26</u>	<u>18</u>	<u>169</u>
	131	131	135	93	98	588
Vancouver Island						
Camosun College	116	135	90	95	84	520
Malaspina University College	47	58	31	54	82	272
North Island College	<u>9</u>	<u>5</u>	<u>11</u>	<u>19</u>	<u>14</u>	<u>58</u>
	172	198	132	168	180	850
Total Non Lower Mainland	331	347	295	275	291	1,539
Lower Mainland						
Public						
BCIT	26	17	19	17	20	99
Capilano College	21	18	26	21	25	111
Douglas College	24	18	17	19	14	92
Kwantlen University College	12	24	23	15	16	90
UC of the Fraser Valley	14	15	14	12	13	68
Langara College	<u>37</u>	<u>34</u>	<u>38</u>	<u>20</u>	<u>26</u>	<u>155</u>
	134	126	137	104	114	615
Private						
Columbia College	3	6	2	0	2	13
Coquitlam College	<u>0</u>	<u>5</u>	<u>2</u>	<u>4</u>	<u>0</u>	<u>11</u>
	3	11	4	4	2	24
Total Lower Mainland	137	137	141	108	116	639
Total Students with College Experience	468	484	436	383	407	2,178

Percentage Distribution

Non Lower Mainland						
Nothern B.C.	6.0	3.7	6.4	3.7	3.2	4.6
Interior/Kootenays	28.0	27.1	31.0	24.3	24.1	27.0
Vancouver Island	<u>36.8</u>	<u>40.9</u>	<u>30.3</u>	<u>43.9</u>	<u>44.2</u>	<u>39.0</u>
Total Non Lower Mainland	70.7	71.7	67.7	71.8	71.5	70.7
Lower Mainland						
Public	28.6	26.0	31.4	27.2	28.0	28.2
Private	<u>0.6</u>	<u>2.3</u>	<u>0.9</u>	<u>1.0</u>	<u>0.5</u>	<u>1.1</u>
Total Lower Mainland	29.3	28.3	32.3	28.2	28.5	29.3
Grand Total	100.0	100.0	100.0	100.0	100.0	100.0

Table 19
Students with College Experience Admitted to UVic by Age Interval
(Excludes College Transfer Students)
(1994/95 to 1998/99)

Region/College	<20	20-24	25-29	30-34	35-39	>39	Total	Average
Non Lower Mainland								
Northern B.C.								
College of New Caledonia	7	18	8	9	8	9	59	29.2
Northern Lights College	1	3	3	1	4	3	15	32.0
Northwest Community College	<u>5</u>	<u>6</u>	<u>3</u>	<u>3</u>	<u>1</u>	<u>9</u>	<u>27</u>	<u>31.2</u>
	13	27	14	13	13	21	101	30.2
Interior/Kootenays								
College of the Rockies (EKCC)	2	6	6	4	4	3	25	29.8
Okanagan University College	22	91	60	36	62	77	348	31.5
Selkirk College	6	13	2	7	5	12	45	31.2
UC of the Cariboo	<u>13</u>	<u>48</u>	<u>36</u>	<u>20</u>	<u>19</u>	<u>32</u>	<u>168</u>	<u>30.0</u>
	43	158	104	67	90	124	586	31.0
Vancouver Island								
Camosun College	73	208	92	45	36	66	520	27.1
Malaspina University College	27	94	42	27	23	58	271	29.8
North Island College	<u>12</u>	<u>6</u>	<u>10</u>	<u>5</u>	<u>7</u>	<u>17</u>	<u>57</u>	<u>31.2</u>
	112	308	144	77	66	141	848	28.2
Total Non Lower Mainland	168	493	262	157	169	286	1,535	29.4
Lower Mainland								
Public								
BCIT	3	15	17	22	11	31	99	33.5
Capilano College	23	28	26	8	6	19	110	27.8
Douglas College	5	31	19	13	10	14	92	29.6
Kwantlen University College	27	41	10	5	3	4	90	23.5
UC of the Fraser Valley	14	20	13	9	3	9	68	27.4
Langara College	<u>10</u>	<u>46</u>	<u>29</u>	<u>20</u>	<u>15</u>	<u>35</u>	<u>155</u>	<u>30.8</u>
	82	181	114	77	48	112	614	29.1
Private								
Columbia College	3	6	2	2	0	0	13	23.2
Coquitlam College	<u>3</u>	<u>8</u>	<u>0</u>	<u>0</u>	<u>0</u>	<u>0</u>	<u>11</u>	<u>20.6</u>
	6	14	2	2	0	0	24	22.0
Total Lower Mainland	88	195	116	79	48	112	638	28.8
Total Students with College Experience	256	688	378	236	217	398	2,173	29.2

Percentage Distribution								
Non Lower Mainland								
Northern B.C.	12.9	26.7	13.9	12.9	12.9	20.8	100.0	
Interior/Kootenays	7.3	27.0	17.7	11.4	15.4	21.2	100.0	
Vancouver Island	<u>13.2</u>	<u>36.3</u>	<u>17.0</u>	<u>9.1</u>	<u>7.8</u>	<u>16.6</u>	<u>100.0</u>	
Total Non Lower Mainland	10.9	32.1	17.1	10.2	11.0	18.6	100.0	
Lower Mainland								
Public	13.4	29.5	18.6	12.5	7.8	18.2	100.0	
Private	<u>25.0</u>	<u>58.3</u>	<u>8.3</u>	<u>8.3</u>	<u>0.0</u>	<u>0.0</u>	<u>100.0</u>	
Total Lower Mainland	13.8	30.6	18.2	12.4	7.5	17.6	100.0	
Grand Total	11.8	31.7	17.4	10.9	10.0	18.3	100.0	

Table 20
Students with College Experience Admitted to UVic by Gender
(Excludes College Transfer Students)
(1994/95 to 1998/99)

Region/College	Male	Female	Total	Percentage	
				Male	Female
Non Lower Mainland					
Northern B.C.					
College of New Caledonia	11	48	59	18.6	81.4
Northern Lights College	2	13	15	13.3	86.7
Northwest Community College	7	20	27	25.9	74.1
	20	81	101	19.8	80.2
Interior/Kootenays					
College of the Rockies (EKCC)	10	15	25	40.0	60.0
Okanagan University College	69	280	349	19.8	80.2
Selkirk College	17	28	45	37.8	62.2
UC of the Cariboo	30	139	169	17.8	82.2
	126	462	588	21.4	78.6
Vancouver Island					
Camosun College	185	335	520	35.6	64.4
Malaspina University-College	74	198	272	27.2	72.8
North Island College	14	44	58	24.1	75.9
	273	577	850	32.1	67.9
Total Non Lower Mainland	419	1,120	1,539	27.2	72.8
Lower Mainland					
Public					
BCIT	40	59	99	40.4	59.6
Capilano College	44	67	111	39.6	60.4
Douglas College	25	67	92	27.2	72.8
Kwantlen University College	30	60	90	33.3	66.7
UC of the Fraser Valley	14	54	68	20.6	79.4
Langara College	44	111	155	28.4	71.6
	197	418	615	32.0	68.0
Private					
Columbia College	8	5	13	61.5	38.5
Coquitlam College	6	5	11	54.5	45.5
	14	10	24	58.3	41.7
Total Lower Mainland	211	428	639	33.0	67.0
Total Students with College Experience	630	1,548	2,178	28.9	71.1

Appendix

Definitions And Technical Notes

Session: The academic year at The University of Victoria is divided into two sessions: a four-month summer session (May to August), and an eight-month winter session (September to April). This contrasts with the semester or trimester system containing two or three four-month periods of study.

B.C. College Transfers: These are students admitted to the University of Victoria, primarily on the basis of their performance at a B.C. college or colleges, and who register and begin work in at least one UVic session. Those who withdraw, either in the first or a subsequent session, are included. For the purposes of this report, students who have earned transfer credits from more than one B.C. college are grouped with the college where the majority of these credits were earned. With few exceptions, B.C. college transfer students have earned a minimum of 12 units of transferable academic credit, at least half of which has been acquired at one or more B.C. colleges. In most instances, B.C. college transfers have earned 12 or more units of transfer at the one college they have attended.

B.C. High/Secondary School Students: These are students admitted to the University of Victoria, on the basis of their performance at a B.C. high school, who register and begin work in at least one UVic session. Those who withdraw, either in the first or a subsequent session, are included. Both students who enter UVic immediately after secondary school, and those who enter after some delay, are included.

Grading Systems: The University of Victoria uses a grade point system to evaluate course performance. A grade point is a numerical value given to a letter grade, with 9 equivalent to A⁺, 8 to A, 7 to A⁻, 6 to B⁺, 5 to B, 4 to B⁻, 3 to C⁺, 2 to C, 1 to D, and 0 to failure. The weighted average of such grades is called a grade point average. This compares with the four point (0-4) and percentage (0-100) systems used at other institutions. However, B.C. college transfers and B.C. high school students are admitted to UVic based on a percentage average. These admission averages are derived from a variety of incoming grading systems, and are not recalculated by UVic to a Grade Point system.

Comparing Grading Systems: Comparisons of, and conversions between the grading systems described above are difficult. For example, in Table 10 of this report, the conversion of admission average to a 9-point GPA scale would facilitate an analysis of whether students transferring to university experience a decline in GPA from admission GPA to first session GPA. Unfortunately, there is no direct mathematical linkage between a grade point and a percentage value (e.g. 90% does not automatically translate into a 9 GP). A 9 GP represents “A+” work, a level generally associated with percentage grades anywhere from 85% to 100%. While a midpoint (92.5%) could be construed to be equivalent to a GP of 9.0, the conversion requires sufficient estimation and interpolation to cast doubt on comparisons between “real” GPAs and “constructed” GPAs. (The potential error is even greater when a single admission average is converted to a single GPA, rather than when a number of individual course grades are converted to corresponding GPs and a GPA calculated.) Given that admission GPA and first session GPA might differ only slightly, the error introduced by estimating GPAs from admission averages renders any comparisons suspect.

Grade Point Average (GPA): The university recognizes three types of grade point averages for its students. The sessional GPA is based on all grades earned during a given winter or summer session. The graduating GPA of a student in a bachelor's degree program is based on grades in 300 and 400 level (and in Education 700 level) courses acceptable within the degree program being taken. The cumulative GPA is based on all courses taken while at the university. While other GPA measures and concepts might have resulted in easier comparisons with other institutions, these are the measures accepted at UVic (and calculated/recorded on its student records system).

The Effect of Differing Academic Regulations: Universities adopt numerous academic policies/regulations that differ from institution to institution, and often use different terminology to refer to essentially similar concepts. Inter-institutional comparisons are therefore sometimes difficult. Caution should be exercised when comparing this report's findings to those in the corresponding Simon Fraser University and University of British Columbia reports.

Graduation Rates: Graduation rates in this report are based on those students admitted in 1994/95 or 1995/96 who had graduated by May 1999. Because B.C. College Transfers have begun their work at UVic at a higher year level than B.C. High School Students, a higher percentage of the former will have graduated. The high school students who have graduated will include many who are highly-motivated and have proceeded through UVic at a full-time rate. As such, cohort comparisons of graduation rates should be made with caution.

Full-Time/Part-Time Status: All non-co-op undergraduate students registered in at least twelve units of course work during a given winter session and all co-op undergraduate students are classified as full-time. All non-co-op undergraduate students registered in less than twelve units of course work during a given winter session are classified as part-time. Full-time and part-time status is not defined for summer sessions.