
Profile of BC College Transfer Students Admitted to the University of Victoria 1998/99 to 2002/03

October 2004

Prepared by:

Alan Wilson

Jim Martell

Office of Institutional Planning and Analysis
University of Victoria

555 SEYMOUR STREET
SUITE 709
VANCOUVER, BC
V6B 3H6
CANADA

TEL: 604-412-7700
FAX: 604-683-0576

EMAIL: admin@bccat.bc.ca
WEB: www.bccat.bc.ca

Prepared for and Funded by the

BRITISH COLUMBIA COUNCIL ON
ADMISSIONS & TRANSFER

SUPPORTING BC's
EDUCATION SYSTEM

**Profile of B.C. College Transfer Students
Admitted to the University of Victoria
1998-99to 2002/03**

**by Alan Wilson
Jim Martell
Institutional Planning and Analysis
University of Victoria
P.O. Box 1700
Victoria, B.C. V8W 2Y2
telephone (250) 721-8026**

**Funding for this project was provided by
British Columbia Council on Admissions and Transfer
709 - 555 Seymour Street
Vancouver, B.C., V6B 3H6
telephone (604) 412-7700
facsimile (604) 683-0576
e-mail admin@bccat.bc.ca
world wide web: www.bccat.bc.ca**

**© Copyright 2004
British Columbia Council on Admissions and Transfer
BCCAT is the official mark of the B.C. Council
on Admissions and Transfer
as published by the Registrar of Trade-marks
of the Canadian Intellectual Property Office**

**This report is also available in Adobe Acrobat
Portable Document Format (pdf)
from BCCAT online, the Internet service of the
B.C. Council on Admissions and Transfer:
www.bccat.bc.ca**

**Photocopying and further distribution of this document is permitted.
Please credit source.**

TABLE OF CONTENTS

INTRODUCTION	5
ANALYSIS	6
TABLES & FIGURES	11
A. PROFILE OF B.C. COLLEGE TRANSFER STUDENTS	11
Table 1 - B.C. College Transfers Admitted to UVic by Year of Admission	12
Figure 1 - B.C. College Transfers Admitted to UVic by College.....	13
Table 2 - B.C. College Transfers Admitted to UVic by Total Transfer Credit Units	14
Table 3 - B.C. College Transfers Admitted to UVic by Session Type and Full-Time/Part-Time Status	15
Table 4 - B.C. College Transfers Admitted to UVic by Faculty	16
Table 5 - B.C. College Transfers Admitted to UVic by Degree Expected	17
Table 6 - B.C. College Transfers Admitted to UVic by Program Area.....	18
Table 7 - B.C. College Transfers Admitted to UVic by Age Interval	20
Table 8 - B.C. College Transfers Admitted to UVic by Gender.....	21
Table 9 - B.C. College Transfers Admitted to UVic by Admission Average.....	22
B. ACADEMIC PERFORMANCE OF B.C. COLLEGE TRANSFER STUDENTS	23
Table 10 - Academic Performance of B.C. College Transfers Admitted to UVic.....	24
Table 11 - Course Performance of B.C. College Transfers Admitted to UVic	25
Figure 2 - Academic Performance Comparison of B.C. High School Entrants and B.C. College Transfers Admitted to UVic	37
Table 12 - Graduation Rates of B.C. College Transfers Admitted to UVic by Total Transfer Credit Units	39
Table 13 - Cumulative UVic GPA of B.C. College Transfers Admitted to UVic at time of Graduation	41
Figure 3 - Cumulative UVic GPA Comparison of B.C. High School Entrants and B.C. College Transfers Admitted to UVic	43
C. PROFILE OF B.C. COLLEGE TRANSFER STUDENTS WHO GRADUATED	45
Table 14 - Academic Performance of B.C. College Transfers Admitted to UVic Who Graduated	46
Table 15 - Graduation Area of B.C. College Transfers Admitted to UVic	47
Table 16 - Credentials Awarded to B.C. College Transfers Admitted to UVic.....	49
Table 17 - Average Years to Credential for B.C. College Transfers Who Have Graduated	50
D. PROFILE OF STUDENTS WITH COLLEGE EXPERIENCE	51
Table 18 - Students With College Experience Admitted to UVic by Year of Admission	52
Table 19 - Students With College Experience Admitted to UVic by Age Interval	53
Table 20 - Students With College Experience Admitted to UVic by Gender	54
APPENDIX	55
Definitions and Technical Notes	55

INTRODUCTION

The *Profile of B.C. College Transfer Students Admitted to the University of Victoria 1998/99 to 2002/03* examines the population of college transfer students who entered the university during the last five years. Essentially an updated version of the April, 2000 report (which covered the academic years 1994/95 to 1998/99), this report differs from a similar report produced by the Office of Analytical Studies at Simon Fraser University due to the different academic structure at UVic. In contrast to SFU, which has three equal semesters, the UVic academic year is divided into a four-month summer session and an eight-month winter session.

Students by Admission Category (Undergraduate)

Category	1998/99	%	1999/00	%	2000/01	%	2001/02	%	2002/03	%	Total	%
B.C. High School	1,557	33.9	1,539	35.7	1,929	35.8	1,996	37.4	1,474	31.9	8,495	35.0
B.C. College Transfer	1,296	28.2	1,099	25.5	1,696	31.4	1,352	25.3	1,154	25.0	6,597	27.2
Degree Holder	398	8.7	502	11.6	426	7.9	478	8.9	426	9.2	2,230	9.2
Out-of-Province Secondary	234	5.1	183	4.2	203	3.8	260	4.9	160	3.5	1,040	4.3
Out-of-Province University	145	3.2	139	3.2	174	3.2	171	3.2	110	2.4	739	3.0
Out-of-Province College	187	4.1	139	3.2	180	3.3	182	3.4	183	4.0	871	3.6
Special Access (Mature, Disabled)	67	1.5	60	1.4	74	1.4	117	2.2	133	2.9	451	1.9
B.C. University Transfer	68	1.5	57	1.3	109	2.0	63	1.2	109	2.4	406	1.7
Other	637	13.9	593	13.8	604	11.2	724	13.6	875	18.9	3,433	14.1
Total	4,589	100.0	4,311	100.0	5,395	100.0	5,343	100.0	4,624	100.0	24,262	100.0

Students with Some B.C. College Transfer Credit by Admission Category (Undergraduate)

Category	1998/99	%	1999/00	%	2000/01	%	2001/02	%	2002/03	%	Total	%
B.C. College Transfer	1,296	74.5	1,099	75.2	1,696	81.2	1,352	76.7	1,154	74.4	6,597	76.7
B.C. High School	70	4.0	64	4.4	94	4.5	73	4.1	39	2.5	340	4.0
Degree Holder	86	4.9	98	6.7	84	4.0	90	5.1	79	5.1	437	5.1
Special Access (Mature, Disabled)	36	2.1	33	2.3	38	1.8	38	2.2	60	3.9	205	2.4
B.C. University Transfer	25	1.4	12	0.8	45	2.2	18	1.0	57	3.7	157	1.8
Out-of-Province Secondary	7	0.4	0	0.0	4	0.2	3	0.2	1	0.1	15	0.2
Out-of-Province University	12	0.7	10	0.7	9	0.4	18	1.0	4	0.3	53	0.6
Out-of-Province College	16	0.9	10	0.7	10	0.5	16	0.9	15	1.0	67	0.8
Other	192	11.0	136	9.3	108	5.2	155	8.8	143	9.2	734	8.5
Total	1,740	100.0	1,462	100.0	2,088	100.0	1,763	100.0	1,552	100.0	8,605	100.0

In addition to B.C. college transfers and B.C. high school entrants, students may be admitted to UVic in a number of other categories, as tabulated above. Predictably, B.C. high school and B.C. college transfers form the bulk (63%) of new admissions. Also tabulated above are students by admission category with some B.C. college credit. Most of these students are, of course, B.C. college transfer students. Nevertheless, an average of 371 students were admitted annually in other categories who also transferred B.C. college credits to UVic.

The focus of this report is on those students admitted to the University of Victoria as B.C. college transfers. In most cases, students in this category have at least twelve units of transfer credit. Sixty units (fifteen units in each of four years) are usually required for a bachelor's degree, where a 1.5 unit UVic course is comparable to a 3 credit course at most other B.C. universities and colleges. The tabulations in this report are generally by the B.C. college the student attended. These colleges are grouped into two regions particularly appropriate for mainland B.C. universities: Lower Mainland, and Non Lower Mainland. Lower Mainland is divided into two categories: Public and Private. Non Lower Mainland is divided into three regions: Northern B.C., Interior/Kootenays, and Vancouver Island. When the student attended and earned transfer credits from more than one college, the one shown is where the majority of such credits were earned. In cases where the number of credits earned from each college is the same, the most recently attended college is shown.

ANALYSIS

A. Profile of B.C. College Transfer Students

The report is divided into four sections. **Section A**, composed of Tables 1-9, provides a general profile of the 6,597 B.C. college transfer students who first registered and commenced studies at UVic in any session between summer 1998 and winter 2002/03. This group includes students who withdrew sometime during their first session. For someone who began in September in a winter session, this withdrawal could have been as late as February, after the completion of fall courses.

Table 1, *B.C. College Transfers Admitted to UVic by Year of Admission*, tabulates B.C. College transfers by region, college, and year of admission. Counts of students admitted from B.C. high schools are included for comparison. An average of 1,319 B.C. College students were admitted to UVic each year between 1998/99 and 2002/03. Camosun College in Victoria continues to lead all other B.C. Colleges by a wide margin as a source of transfers to UVic, at 35%. Malaspina University-College, also on Vancouver Island, is a distant second at 10%, and Langara College in the Lower Mainland is third at 9%. The proportion of transfer students coming from Camosun rose steadily from 30% in 1998/99 to 41% in 2002/03.

Table 2, *B.C. College Transfers Admitted to UVic by Total Transfer Credit Units*, tabulates B.C. college transfers by college and transfer credits. Almost half (46%) of all transfer students entered with at least 27.5 units, while only 24% entered with 17 or fewer units. Students coming from colleges in the Lower Mainland were more likely to transfer at least 27.5 units (55%) than were students from non-lower mainland colleges (41%).

Table 3, *B.C. College Transfers Admitted to UVic by Session Type & Full-Time/Part-Time Status*, breaks down entrants by session type. For winter session entrants, the full-time/part-time status is also displayed. Full-time requires enrolment in at least twelve units of course work for students not enrolled in a co-op program. All co-op students are defined as full-time. Approximately 12% of B.C. college transfer students began in the summer, compared to only 1% of B.C. high school entrants.

B.C. high school winter session entrants are much more likely to enroll as full-time students (75%) than B.C. college transfers (48%), though a majority (70%) of transfers from Okanagan University College enrolled as full-time students. Students from the Lower Mainland, especially Langara (66%) and Douglas (79%), are more likely to enroll as part-time students than are students from the non-lower mainland.

Table 4, *B.C. College Transfers Admitted to UVic by Faculty*, which tabulates students by the faculty entered, indicates that the vast majority of B.C. high school entrants (79%) started in Humanities, Science or Social Sciences, while B.C. college transfers were most likely to enter Human and Social Development, Social Sciences or Humanities (69%). Usually, first year students cannot enter the Faculties of Business, Education, Human and Social Development, or Law. Because most college transfer students enter UVic at a second year level or higher, they can directly enter these faculties; as a result, transfer students were more likely than high school entrants to start in Business, Education or Human and Social Development. Thus this Table is more a reflection of year level than degree intention.

Table 5, *B.C. College Transfers Admitted to UVic by Degree Expected*, shows that the most frequent choice (by 30%) is one of the many BA degree programs. The second degree expected (by 14%) is a Bachelor of Nursing degree.

Table 6, *B.C. College Transfers Admitted to UVic by Program Area*, is included to be compatible with the Simon Fraser report. However, since most B.C. college transfer students do not specify an area of study during their first session at UVic, the program areas displayed are combinations of faculty and degree-expected data. For B.C. college transfers, the most popular initial program area is Arts (30%) followed by Nursing (14%).

Table 7, *B.C. College Transfers Admitted to UVic by Age Interval*, displays the age distribution of college transfer students. On average, college entrants are more than six years older (24.5) than high school entrants (18.1). Entrants from BCIT and Northern Lights College are older (28.7 & 32.5) than entrants from other colleges.

Table 8, *B.C. College Transfers Admitted to UVic by Gender*, shows that females comprise the majority of both B.C. college transfers (63%) and B.C. high school entrants (57%). Sixty percent of non-lower mainland college transfers were women, compared to 68% of transfers from Lower Mainland colleges. Possibly because of the high number of Nursing transfers, the highest proportion of female transfer students came from Douglas College (79%).

Table 9, *B.C. College Transfers Admitted to UVic by Admission Average*, indicates an overall mean of 74.8 and an overall median of 74.0.

B. Academic Performance of B.C. College Transfer Students

Section B examines the UVic performance of B.C. college entrants, and is composed of Tables 10-13 and Figures 2 and 3. As in section A, Tables 10 and 11 provide a profile of all 6,597 B.C. college transfer students who first registered and commenced studies at UVic in any session between summer 1998 and winter 2002/03. Tables 12 and 13 focus on those who entered between summer 1998 and winter 1999/00, and hence have had sufficient time to earn a credential.

In addition to the admission average, **Table 10**, *Academic Performance of B.C. College Transfers Admitted to UVic*, gives the first session grade point average, graduating grade point average, and cumulative grade point average of B.C. college entrants. A grade point is a numerical value given to a letter grade, with 9 equivalent to A⁺, 8 to A, 7 to A⁻, 6 to B⁺, 5 to B, 4 to B⁻, 3 to C⁺, 2 to C, 1 to D, and 0 to failure. The graduating GPA of a student in a bachelor's degree program is based on grades in 300 and 400 level (and in Education, 700 level) courses acceptable within the degree program being taken. The cumulative GPA is based on all courses taken while at the university. Students from BCIT, who also were the oldest of the eighteen colleges, had the highest average graduating and cumulative GPAs, at 6.66 and 6.56 respectively. Coquitlam College and Columbia College (the only two colleges to supply more men than women) had the lowest graduating and cumulative GPAs (See also Appendix "Comparing Grading Systems").

Table 11, *Course Performance of B.C. College Transfers Admitted To UVic*, spans twelve pages and compares the performance of B.C. college and B.C. high school entrants in a selection of high-enrollment courses. For college categories with only one or two students in a given course, the mean admission average and average course grade are not given. **Figure 2a and Figure 2b** summarize the average grades of B.C. college transfers and B.C. high school entrants for these thirty-four courses. In 74% of the courses, the high school entrants scored higher than the college entrants. A partial explanation may be "transfer shock", given that many of the college students were attending university for the first time, while most, if not all, of the high school students had attended UVic in a previous session.

Table 12, *Graduation Rates of B.C. College Transfers Admitted to UVic by Total Transfer Credit Units*, tabulates the graduation rates of B.C. college transfers by college and total transfer credit units at the time of admission, for those who entered in 1998/99 or 1999/00. As one would expect, these rates tend to be higher for those who entered with more transfer credits, and hence were further along in their programs. Also, differences among colleges in the average number of transfer credits among its students would lead to differences in graduation rates. Note that those who withdrew during their first session are included. Of students who entered in 98/99 or 99/00, 68.8% have graduated, but some are still at UVic and will graduate in the future.

Table 13, *Cumulative UVic GPA of B.C. College Transfers Admitted to UVic at Time of Graduation*, shows that the 2,209 graduating B.C. college transfer students who entered between 1998/99 and 2002/03 (and for whom a cumulative GPA was available) had a mean cumulative GPA of 6.02. As

noted above, the cumulative GPA is based on all courses taken while at UVic. Selkirk College and BCIT were the highest among the colleges at 6.59 and 6.56 respectively. **Figure 3** compares the cumulative GPA of B.C. college transfers with B.C. high school entrants. Since high school entrants usually begin at UVic at the first year level, rather than at the second or third year level like college transfers, only 931 have graduated (671 of whom had cumulative GPAs available).

C. Profile of B.C. College Transfer Students who Graduated

Section C, composed of **Tables 14-17**, focuses on the 2,756 B.C. college transfer students admitted to UVic during the last five years who have graduated.

Table 14, *Academic Performance of B.C. College Transfers Admitted to UVic Who Graduated*, summarizes the grade performance of this group. While students from lower mainland colleges had, on average, lower admission GPA than did non-lower mainland transfer students (5.4 and 5.7 respectively), cumulative GPA were higher for transfers from lower mainland colleges (6.14) than for transfers from non-lower mainland colleges (5.95). On average, Coquitlam College transfers had lower graduating GPA (4.22) than admission GPA (4.7); for all other colleges, graduating GPA exceeded admission GPA.

Table 15, *Graduation Area of B.C. College Transfers Admitted to UVic*, shows that the most popular areas are nursing (chosen by 19%), commerce (9%), and psychology (6%).

Table 16, *Credentials Awarded to B.C. College Transfers Admitted to UVic*, shows the distribution by degree awarded. For both B.C. college transfer students and B.C. high school entrants, BAs predominated at 37.7% and 45.9% respectively. BScs were awarded to 14.8% and 27.3% respectively, with a BSc in Nursing completed by 19.5% of college transfers.

Table 17, *Average Years to Credential for B.C. College Transfers who have Graduated*, shows the average number of years to graduation by credential awarded, the overall average being 2.5. This period of time is measured from when the student first entered UVic, whether enrolment was continuous from the time of entry to the time of graduation or not. These figures are largely dependent on the number of transfer credits the entering student would have had. Figures will change as more students graduate.

D. Profile of Students with College Experience

Section D, comprised of Tables 18-20, profiles the 1,855 students who were not admitted to UVic on the basis of work at a B.C. college, but who attended a B.C. college sometime in the past. This group includes those admitted on the basis of a B.C. high school, out-of-province secondary, mature students, students from another university, etc. In cases where more than one college was attended, the most recent is chosen.

Table 18, *Students with College Experience Admitted to UVic by Year of Admission*, shows that the top three sources of students with college experience admitted to UVic are Camosun College (23%), Malaspina University-College (14%), and Okanagan University College (12%). It should be noted that the number of students with experience at Camosun increased by 19% between 1998/99 and 2002/03, while the number of students with experience at Malaspina and OUC decreased by 62% and 53% respectively over the same period.

Table 19, *Students with College Experience Admitted to UVic by Age Interval*, which gives the age distribution of students with college experience, shows that, with a mean age of 28.8, they are considerably older than college transfer students, whose mean age from **Table 7** is 24.5. Almost half (49.3%) are between 20-29 years old, and a significant proportion (17%) are more than 39 years old.

Table 20, *Students with College Experience Admitted to UVic by Gender*, shows that over two-thirds (69.4%) are women, which is higher than the B.C. College Transfer group (62.7%).

Section A

PROFILE OF B.C. COLLEGE TRANSFER STUDENTS

Table 1
B.C. College Transfers Admitted to UVic by Year of Admission

Region/College	1998/99	1999/00	2000/01	2001/02	2002/03	Total
Non Lower Mainland						
Northern B.C.						
College of New Caledonia	25	19	39	28	20	131
Northern Lights College	7	4	4	11	4	30
Northwest Community College	19	16	11	9	12	67
	51	39	54	48	36	228
Interior/Kootenays						
College of the Rockies (EKCC)	23	14	32	25	21	115
Okanagan University College	118	89	126	63	66	462
Selkirk College	40	33	56	51	34	214
UC of the Cariboo	71	57	68	51	30	277
	252	193	282	190	151	1,068
Vancouver Island						
Camosun College	388	370	587	504	474	2,323
Malaspina University-College	155	126	163	117	79	640
North Island College	43	40	72	52	26	233
	586	536	822	673	579	3,196
Total Non Lower Mainland	889	768	1,158	911	766	4,492
Lower Mainland						
Public						
BCIT	41	33	36	41	56	207
Capilano College	41	37	71	51	40	240
Douglas College	81	72	113	102	84	452
Kwantlen University College	71	44	96	56	34	301
UC of the Fraser Valley	26	24	33	31	15	129
Langara College	114	108	146	123	119	610
	374	318	495	404	348	1,939
Private						
Columbia College	20	7	21	12	14	74
Coquitlam College	13	6	22	25	26	92
	33	13	43	37	40	166
Total Lower Mainland	407	331	538	441	388	2,105
Total B.C. College Transfers	1,296	1,099	1,696	1,352	1,154	6,597
Total B.C. High School Entrants	1,557	1,539	1,929	1,996	1,474	8,752

Percentage Distribution

Non Lower Mainland						
Northern B.C.	3.9	3.5	3.2	3.6	3.1	3.5
Interior/Kootenays	19.4	17.6	16.6	14.1	13.1	16.2
Vancouver Island	45.2	48.8	48.5	49.8	50.2	48.4
Total Non Lower Mainland	68.6	69.9	68.3	67.4	66.4	68.1
Lower Mainland						
Public	28.9	28.9	29.2	29.9	30.2	29.4
Private	2.5	1.2	2.5	2.7	3.5	2.5
Total Lower Mainland	31.4	30.1	31.7	32.6	33.6	31.9
Grand Total	100.0	100.0	100.0	100.0	100.0	100.0

Figure 1

BC College Transfers Admitted to UVic by College 1998/99 to 2002/03

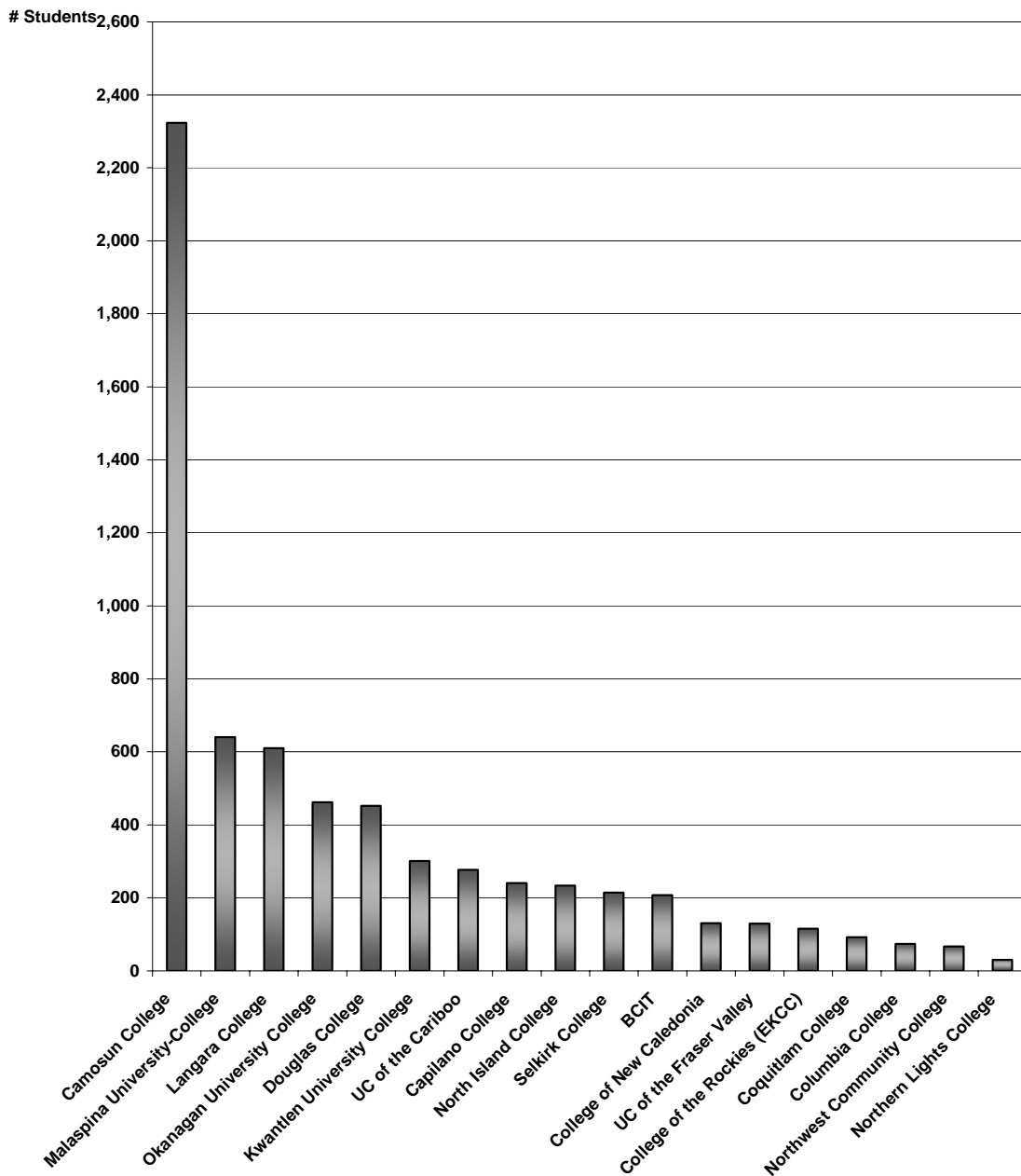


Table 2
B.C. College Transfers Admitted to UVic by Total Transfer Credit Units
(1998/99 to 2002/03)

Region/College	<15	15-17	17.5-19.5	20-22	22.5-24.5	25-27	≥27.5	Total
Non Lower Mainland								
Northern B.C.								
College of New Caledonia	26	24	11	4	3	10	53	131
Northern Lights College	9	3	0	0	1	7	10	30
Northwest Community College	13	22	3	0	12	2	15	67
	48	49	14	4	16	19	78	228
Interior/Kootenays								
College of the Rockies (EKCC)	14	13	7	5	9	1	66	115
Okanagan University College	61	95	27	13	45	42	179	462
Selkirk College	23	49	12	13	24	13	80	214
UC of the Cariboo	46	54	13	12	24	28	100	277
	144	211	59	43	102	84	425	1,068
Vancouver Island								
Camosun College	296	225	218	118	221	244	1,001	2,323
Malaspina University-College	83	82	52	36	52	65	270	640
North Island College	49	38	24	11	16	17	78	233
	428	345	294	165	289	326	1,349	3,196
Total Non Lower Mainland	620	605	367	212	407	429	1,852	4,492
Lower Mainland								
Public								
BCIT	14	10	3	2	3	6	169	207
Capilano College	26	27	32	16	33	25	81	240
Douglas College	37	19	26	17	27	24	302	452
Kwantlen University College	41	26	28	14	33	26	133	301
UC of the Fraser Valley	18	20	14	7	19	14	37	129
Langara College	35	30	26	20	33	43	423	610
	171	132	129	76	148	138	1,145	1,939
Private								
Columbia College	7	16	20	6	5	13	7	74
Coquitlam College	12	25	22	8	10	6	9	92
	19	41	42	14	15	19	16	166
Total Lower Mainland	190	173	171	90	163	157	1,161	2,105
Total B.C. College Transfers	810	778	538	302	570	586	3,013	6,597

Percentage Distribution

Non Lower Mainland								
Nothern B.C.	21.1	21.5	6.1	1.8	7.0	8.3	34.2	100.0
Interior/Kootenays	13.5	19.8	5.5	4.0	9.6	7.9	39.8	100.0
Vancouver Island	13.4	10.8	9.2	5.2	9.0	10.2	42.2	100.0
Total Non Lower Mainland	13.8	13.5	8.2	4.7	9.1	9.6	41.2	100.0
Lower Mainland								
Public	8.8	6.8	6.7	3.9	7.6	7.1	59.1	100.0
Private	11.4	24.7	25.3	8.4	9.0	11.4	9.6	100.0
Total Lower Mainland	9.0	8.2	8.1	4.3	7.7	7.5	55.2	100.0
Grand Total	12.3	11.8	8.2	4.6	8.6	8.9	45.7	100.0

Table 3
B.C. College Transfers Admitted to UVic by Session Type & Full-Time/Part-Time Status
(1998/99 to 2002/03)

Region/College	Summer	Winter FT	Winter PT	Total	Percentage	
					Winter FT	Winter PT
Non Lower Mainland						
Northern B.C.						
College of New Caledonia	6	66	59	131	52.8	47.2
Northern Lights College	2	9	19	30	32.1	67.9
Northwest Community College	2	45	20	67	69.2	30.8
	10	120	98	228	55.0	45.0
Interior/Kootenays						
College of the Rockies (EKCC)	5	78	32	115	70.9	29.1
Okanagan University College	21	309	132	462	70.1	29.9
Selkirk College	7	127	80	214	61.4	38.6
UC of the Cariboo	21	160	96	277	62.5	37.5
	54	674	340	1,068	66.5	33.5
Vancouver Island						
Camosun College	379	806	1,138	2,323	41.5	58.5
Malaspina University-College	92	311	237	640	56.8	43.2
North Island College	12	124	97	233	56.1	43.9
	483	1,241	1,472	3,196	45.7	54.3
Total Non Lower Mainland	547	2,035	1,910	4,492	51.6	48.4
Lower Mainland						
Public						
BCIT	5	81	121	207	40.1	59.9
Capilano College	14	117	109	240	51.8	48.2
Douglas College	25	91	336	452	21.3	78.7
Kwantlen University College	30	140	131	301	51.7	48.3
UC of the Fraser Valley	8	77	44	129	63.6	36.4
Langara College	133	161	316	610	33.8	66.2
	215	667	1,057	1,939	38.7	61.3
Private						
Columbia College	25	22	27	74	44.9	55.1
Coquitlam College	33	30	29	92	50.8	49.2
	58	52	56	166	48.1	51.9
Total Lower Mainland	273	719	1,113	2,105	39.2	60.8
Total B.C. College Transfers	820	2,754	3,023	6,597	47.7	52.3
Total B.C. High School Entrants	104	6,255	2,136	8,495	74.5	25.5

Table 4
B.C. College Transfers Admitted to UVic by Faculty
(1998/99 to 2002/03)

Region/College	Business	Education	Engineering	Fine Arts	Human & Social Development	Humanities	Science	Social Science	Law	Total
Non Lower Mainland										
Northern B.C.										
College of New Caledonia	1	9	14	1	38	20	15	33	0	131
Northern Lights College	1	0	0	2	17	4	2	4	0	30
Northwest Community College	1	0	1	3	13	11	9	28	1	67
	3	9	15	6	68	35	26	65	1	228
Interior/Kootenays										
College of the Rockies (EKCC)	3	49	4	1	17	6	10	25	0	115
Okanagan University College	15	43	58	15	44	100	67	120	0	462
Selkirk College	5	10	12	9	79	32	29	38	0	214
UC of the Cariboo	21	18	38	21	37	45	36	61	0	277
	44	120	112	46	177	183	142	244	0	1,068
Vancouver Island										
Camosun College	93	70	184	77	355	582	204	757	1	2,323
Malaspina University-College	43	57	53	38	103	99	67	179	1	640
North Island College	6	1	19	10	51	55	22	68	1	233
	142	128	256	125	509	736	293	1,004	3	3,196
Total Non Lower Mainland	189	257	383	177	754	954	461	1,313	4	4,492
Lower Mainland										
Public										
BCIT	1	0	73	1	102	9	3	18	0	207
Capilano College	9	3	16	29	33	42	17	91	0	240
Douglas College	18	5	14	18	278	28	14	77	0	452
Kwantlen University College	12	2	32	29	77	40	20	88	1	301
UC of the Fraser Valley	4	4	14	7	26	21	22	31	0	129
Langara College	49	5	21	14	314	58	18	131	0	610
	93	19	170	98	830	198	94	436	1	1,939
Private										
Columbia College	21	0	10	0	1	10	8	24	0	74
Coquitlam College	26	0	11	0	1	15	6	33	0	92
	47	0	21	0	2	25	14	57	0	166
Total Lower Mainland	140	19	191	98	832	223	108	493	1	2,105
Total B.C. College Transfers	329	276	574	275	1,586	1,177	569	1,806	5	6,597
Total B.C. High School Entrants	0	0	973	802	41	2,209	1,999	2,471	0	8,495

Percentage Distribution

Non Lower Mainland										
Northern B.C.	1.3	3.9	6.6	2.6	29.8	15.4	11.4	28.5	0.4	100.0
Interior/Kootenays	4.1	11.2	10.5	4.3	16.6	17.1	13.3	22.8	0.0	100.0
Vancouver Island	4.4	4.0	8.0	3.9	15.9	23.0	9.2	31.4	0.1	100.0
Total Non Lower Mainland	4.2	5.7	8.5	3.9	16.8	21.2	10.3	29.2	0.1	100.0
Lower Mainland										
Public	4.8	1.0	8.8	5.1	42.8	10.2	4.8	22.5	0.1	100.0
Private	28.3	0.0	12.7	0.0	1.2	15.1	8.4	34.3	0.0	100.0
Total Lower Mainland	6.7	0.9	9.1	4.7	39.5	10.6	5.1	23.4	0.0	100.0
Grand Total College Transfers	5.0	4.2	8.7	4.2	24.0	17.8	8.6	27.4	0.1	100.0
High School Entrants	0.0	0.0	11.5	9.4	0.5	26.0	23.5	29.1	0.0	100.0

Table 5
B.C. College Transfers Admitted to UVic by Degree Expected
(1998/99 to 2002/03)

Degree Expected	<u># of Students</u>	<u>% of Students</u>	<u>Admission Average</u>
Bachelor of Arts	1,956	29.6	5.7
Bachelor of Commerce	329	5.0	6.1
Bachelor of Education	258	3.9	6.1
Bachelor of Engineering	361	5.5	6.4
Bachelor of Fine Arts	137	2.1	6.0
Bachelor of Music	63	1.0	5.2
Bachelor of Science	821	12.4	5.8
Bachelor of Nursing	951	14.4	5.3
Bachelor of Social Work	190	2.9	6.1
Non-Degree	32	0.5	5.5
Humanities Undeclared	457	6.9	5.5
Science Undeclared	104	1.6	5.2
Social Science Undeclared	645	9.8	5.4
Human & Social Development Undeclared	206	3.1	5.1
Other	87	1.3	4.6
Total	6,597	100.0	5.6

Note: Excluded from the admission average column are college transfer students with no recorded post-secondary average. They may have no recorded average because they are Nursing or Law students whose averages aren't entered, or because of errors or omissions.

Students are not required to declare a degree program until third year. Most students start in Arts & Science at UVic, even if they eventually enter other Faculties.

Table 6
B.C. College Transfers Admitted to UVic by Program Area*
(1998/99 to 2002/03)

Region/College	Arts	Com- merce	Edu- cation	Engi- neering	Fine Arts	Music	Science
Non Lower Mainland							
Northern B.C.							
College of New Caledonia	34	1	9	10	0	0	19
Northern Lights College	9	1	0	0	1	0	1
Northwest Community College	19	1	0	1	3	0	11
	62	3	9	11	4	0	31
Interior/Kootenays							
College of the Rockies (EKCC)	19	3	48	2	1	0	13
Okanagan University College	149	15	43	50	9	1	65
Selkirk College	48	5	10	7	6	2	33
UC of the Cariboo	83	21	17	30	10	3	38
	299	44	118	89	26	6	149
Vancouver Island							
Camosun College	864	93	70	97	38	8	323
Malaspina University-College	165	43	47	20	30	7	105
North Island College	81	6	1	9	5	0	37
	1,110	142	118	126	73	15	465
Total Non Lower Mainland	1,471	189	245	226	103	21	645
Lower Mainland							
Public							
BCIT	5	1	0	68	0	1	10
Capilano College	102	9	3	8	8	12	27
Douglas College	94	18	5	7	3	13	16
Kwantlen University College	71	12	2	22	14	12	37
UC of the Fraser Valley	37	4	4	13	4	2	21
Langara College	142	49	1	10	7	2	41
	451	93	15	128	36	42	152
Private							
Columbia College	20	21	0	5	0	0	11
Coquitlam College	14	26	0	4	0	0	13
	34	47	0	9	0	0	24
Total Lower Mainland	485	140	15	137	36	42	176
Total B.C. College Transfers	1,956	329	260	363	139	63	821
Percentage Distribution	29.6	5.0	3.9	5.5	2.1	1.0	12
Total B.C. High School Entrants	1,850	0	0	502	530	156	1,886
Percentage Distribution	21.8	0.0	0.0	5.9	6.2	1.8	22

*Note: Estimated based on Faculty and degree expected data.

Table 6 (Cont'd)
B.C. College Transfers Admitted to UVic by Program Area
(1998/99 to 2002/03)

Region/College	<u>Nursing</u>	<u>Social Work</u>	<u>Human-ities Unspecified</u>	<u>Science Unspecified</u>	<u>Social Science Unspecified</u>	<u>Human & Social Development</u>	<u>Other</u>	<u>Total</u>
Non Lower Mainland								
Northern B.C.								
College of New Caledonia	15	4	7	2	14	11	5	131
Northern Lights College	1	5	0	1	3	7	1	30
Northwest Community College	0	7	3	2	13	4	3	67
	<u>16</u>	<u>16</u>	<u>10</u>	<u>5</u>	<u>30</u>	<u>22</u>	<u>9</u>	<u>228</u>
Interior/Kootenays								
College of the Rockies (EKCC)	2	7	3	1	10	4	2	115
Okanagan University College	19	6	32	17	44	8	4	462
Selkirk College	28	23	14	6	18	9	5	214
UC of the Cariboo	18	2	21	6	16	8	4	277
	<u>67</u>	<u>38</u>	<u>70</u>	<u>30</u>	<u>88</u>	<u>29</u>	<u>15</u>	<u>1,068</u>
Vancouver Island								
Camosun College	227	15	230	27	261	43	27	2,323
Malaspina University-College	13	53	43	17	65	21	11	640
North Island College	20	13	19	3	24	13	2	233
	<u>260</u>	<u>81</u>	<u>292</u>	<u>47</u>	<u>350</u>	<u>77</u>	<u>40</u>	<u>3,196</u>
Total Non Lower Mainland	343	135	372	82	468	128	64	4,492
Lower Mainland								
Public								
BCIT	93	0	4	0	14	4	7	207
Capilano College	7	7	18	2	25	8	4	240
Douglas College	200	10	12	6	36	29	3	452
Kwantlen University College	49	7	21	4	32	14	4	301
UC of the Fraser Valley	7	7	7	5	11	7	0	129
Langara College	252	23	17	2	33	26	5	610
	<u>608</u>	<u>54</u>	<u>79</u>	<u>19</u>	<u>151</u>	<u>88</u>	<u>23</u>	<u>1,939</u>
Private								
Columbia College	0	1	2	2	12	0	0	74
Coquitlam College	0	0	9	2	23	1	0	92
	<u>0</u>	<u>1</u>	<u>11</u>	<u>4</u>	<u>35</u>	<u>1</u>	<u>0</u>	<u>166</u>
Total Lower Mainland	608	55	90	23	186	89	23	2,105
Total B.C. College Transfers	951	190	462	105	654	217	87	6,597
Percentage Distribution	14.4	2.9	7.0	1.6	9.9	3.3	1.3	100.0
Total B.C. High School Entrants	0	0	1,322	693	1,509	5	42	8,495
Percentage Distribution	0.0	0.0	15.6	8.2	17.8	0.1	0.5	100.0

Table 7
B.C. College Transfers Admitted to UVic by Age Interval
(1998/99 to 2002/03)

Region/College	<20	20-24	25-29	30-34	35-39	>39	Total	Average
Non Lower Mainland								
Northern B.C.								
College of New Caledonia	28	56	15	10	11	11	131	25.1
Northern Lights College	4	5	4	3	5	9	30	32.5
Northwest Community College	25	22	10	3	3	4	67	23.7
	<u>57</u>	<u>83</u>	<u>29</u>	<u>16</u>	<u>19</u>	<u>24</u>	<u>228</u>	<u>25.7</u>
Interior/Kootenays								
College of the Rockies (EKCC)	17	64	16	6	5	7	115	24.6
Okanagan University College	125	256	38	16	9	18	462	22.5
Selkirk College	55	83	28	14	8	26	214	25.5
UC of the Cariboo	76	138	34	10	6	13	277	23.0
	<u>273</u>	<u>541</u>	<u>116</u>	<u>46</u>	<u>28</u>	<u>64</u>	<u>1,068</u>	<u>23.5</u>
Vancouver Island								
Camosun College	192	1,344	466	160	72	89	2,323	24.4
Malaspina University-College	105	360	70	27	33	45	640	24.4
North Island College	60	100	24	17	9	23	233	24.8
	<u>357</u>	<u>1,804</u>	<u>560</u>	<u>204</u>	<u>114</u>	<u>157</u>	<u>3,196</u>	<u>24.4</u>
Total Non Lower Mainland	<u>687</u>	<u>2,428</u>	<u>705</u>	<u>266</u>	<u>161</u>	<u>245</u>	<u>4,492</u>	<u>24.3</u>
Lower Mainland								
Public								
BCIT	6	87	43	21	17	33	207	28.7
Capilano College	31	146	41	1	8	13	240	23.8
Douglas College	19	264	60	35	26	48	452	26.3
Kwantlen University College	29	202	43	11	9	7	301	23.3
UC of the Fraser Valley	29	75	11	5	3	6	129	23.1
Langara College	28	324	132	61	32	33	610	25.8
	<u>142</u>	<u>1,098</u>	<u>330</u>	<u>134</u>	<u>95</u>	<u>140</u>	<u>1,939</u>	<u>25.4</u>
Private								
Columbia College	10	56	5	1	0	2	74	22.0
Coquitlam College	6	77	8	1	0	0	92	21.7
	<u>16</u>	<u>133</u>	<u>13</u>	<u>2</u>	<u>0</u>	<u>2</u>	<u>166</u>	<u>21.8</u>
Total Lower Mainland	<u>158</u>	<u>1,231</u>	<u>343</u>	<u>136</u>	<u>95</u>	<u>142</u>	<u>2,105</u>	<u>25.1</u>
Total B.C. College Transfers	845	3,659	1,048	402	256	387	6,597	24.5
Total B.C. High School Entrants	8,026	413	22	12	10	12	8,495	18.1

Percentage Distribution

Non Lower Mainland								
Northern B.C.	25.0	36.4	12.7	7.0	8.3	10.5	100.0	
Interior/Kootenays	25.6	50.7	10.9	4.3	2.6	6.0	100.0	
Vancouver Island	11.2	56.4	17.5	6.4	3.6	4.9	100.0	
Total Non Lower Mainland	<u>15.3</u>	<u>54.1</u>	<u>15.7</u>	<u>5.9</u>	<u>3.6</u>	<u>5.5</u>	<u>100.0</u>	
Lower Mainland								
Public	7.3	56.6	17.0	6.9	4.9	7.2	100.0	
Private	9.6	80.1	7.8	1.2	0.0	1.2	100.0	
Total Lower Mainland	<u>7.5</u>	<u>58.5</u>	<u>16.3</u>	<u>6.5</u>	<u>4.5</u>	<u>6.7</u>	<u>100.0</u>	
Grand Total College Transfers	12.8	55.5	15.9	6.1	3.9	5.9	100.0	
Grand Total High School Entrants	94.5	4.9	0.3	0.1	0.1	0.1	100.0	

Table 8
B.C. College Transfers Admitted to UVic by Gender
(1998/99 to 2002/03)

Region/College	Male	Female	Total	Percentage	
				Male	Female
Non Lower Mainland					
Northern B.C.					
College of New Caledonia	52	79	131	39.7	60.3
Northern Lights College	7	23	30	23.3	76.7
Northwest Community College	21	46	67	31.3	68.7
	80	148	228	35.1	64.9
Interior/Kootenays					
College of the Rockies (EKCC)	31	84	115	27.0	73.0
Okanagan University College	192	270	462	41.6	58.4
Selkirk College	68	146	214	31.8	68.2
UC of the Cariboo	115	162	277	41.5	58.5
	406	662	1,068	38.0	62.0
Vancouver Island					
Camosun College	937	1,386	2,323	40.3	59.7
Malaspina University-College	287	353	640	44.8	55.2
North Island College	80	153	233	34.3	65.7
	1,304	1,892	3,196	40.8	59.2
Total Non Lower Mainland	1,790	2,702	4,492	39.8	60.2
Lower Mainland					
Public					
BCIT	91	116	207	44.0	56.0
Capilano College	93	147	240	38.8	61.3
Douglas College	93	359	452	20.6	79.4
Kwantlen University College	99	202	301	32.9	67.1
UC of the Fraser Valley	45	84	129	34.9	65.1
Langara College	162	448	610	26.6	73.4
	583	1,356	1,939	30.1	69.9
Private					
Columbia College	40	34	74	54.1	45.9
Coquitlam College	48	44	92	52.2	47.8
	88	78	166	53.0	47.0
Total Lower Mainland	671	1,434	2,105	31.9	68.1
Total B.C. College Transfers	2,461	4,136	6,597	37.3	62.7
Total B.C. High School Entrants	3,693	4,802	8,495	43.5	56.5

Table 9
B.C. College Transfers Admitted to UVic by Admission Average
(1998/99 to 2002/03)

Average	# of Students	% of Total
<60	10	0.2
60	9	0.1
61	10	0.2
62	6	0.1
63	15	0.2
64	20	0.3
65	71	1.1
66	148	2.2
67	203	3.1
68	244	3.7
69	264	4.0
70	355	5.4
71	332	5.0
72	387	5.9
73	394	6.0
74	399	6.0
75	378	5.7
76	385	5.8
77	286	4.3
78	331	5.0
79	276	4.2
80	242	3.7
81	204	3.1
82	203	3.1
83	138	2.1
84	118	1.8
85	96	1.5
>85	169	2.6
Not Available	904	13.7
Total	6,597	100
Median	74.0	
Mean	74.8	

Note: Admission averages are not available for college transfer students with no recorded post-secondary average. They may have no recorded average because they are Nursing or Law students whose averages aren't entered, or because of errors or omissions.

Section B

ACADEMIC PERFORMANCE OF B.C. COLLEGE TRANSFER STUDENTS

Table 10
Academic Performance of B.C. College Transfers Admitted to UVic
(1998/99 to 2002/03)

Region/College	# of Admitted Students	Admission GPA	1st Session GPA	# of Graduating Students	Graduating GPA	Cumulative GPA
Non Lower Mainland						
Northern B.C.						
College of New Caledonia	131	5.64	5.21	38	6.01	5.92
Northern Lights College	30	6.68	5.85	9	6.49	6.25
Northwest Community College	67	5.89	4.76	26	5.88	5.69
	228	5.85	5.16	73	6.02	5.88
Interior/Kootenays						
College of the Rockies (EKCC)	115	6.21	5.87	43	6.53	6.34
Okanagan University College	462	6.05	5.65	197	6.17	5.99
Selkirk College	214	5.95	5.80	92	6.56	6.59
UC of the Cariboo	277	5.68	5.29	118	6.07	6.01
	1,068	5.95	5.61	450	6.26	6.15
Vancouver Island						
Camosun College	2,323	5.71	5.33	902	5.94	5.85
Malaspina University-College	640	5.70	5.32	303	5.99	5.90
North Island College	233	5.94	5.58	97	6.42	6.21
	3,196	5.72	5.35	1,302	5.99	5.89
Total Non Lower Mainland	4,492	5.78	5.40	1,825	6.06	5.95
Lower Mainland						
Public						
BCIT	207	6.55	6.06	52	6.66	6.56
Capilano College	240	5.45	5.45	86	6.14	6.11
Douglas College	452	5.25	5.87	205	6.37	6.37
Kwantlen University College	301	5.40	5.19	137	5.89	5.86
UC of the Fraser Valley	129	5.67	5.96	53	6.48	6.27
Langara College	610	5.29	5.81	344	6.30	6.30
	1,939	5.48	5.72	877	6.27	6.24
Private						
Columbia College	74	5.13	5.17	27	4.83	4.79
Coquitlam College	92	5.40	4.12	27	4.22	4.15
	166	5.28	4.59	54	4.53	4.47
Total Lower Mainland	2,105	5.46	5.63	931	6.17	6.14
Total B.C. College Transfers	6,597	5.68	5.47	2,756	6.09	6.02

Notes:

Graduating GPA = based on 300 and 400 level (and in Education, 700 level) courses acceptable within the degree program.

Cumulative GPA = based on all courses taken at UVic.

Table 11
Course Performance of B.C. College Transfers Admitted to UVic
(1998/99 to 2002/03)
For Selected Courses

Region/College	BIOC200			BIOL210			BIOL215		
	Admis- sion N	Avg. Cr Average	Avg. Gr Grade	Admis- sion N	Avg. Cr Average	Avg. Gr Grade	Admis- sion N	Avg. Cr Average	Avg. Gr Grade
Non Lower Mainland									
Northern B.C.									
College of New Caledonia	9	5.5	2.77	4	4.5	3.00	7	5.4	5.00
Northern Lights College	0			0			0		
Northwest Community College	9	5.4	2.88	0			12	5.6	5.16
	18	5.5	2.83	4	4.5	3.00	19	5.5	5.10
Interior/Kootenays									
College of the Rockies (EKCC)	10	5.8	3.30	6	4.5	4.00	7	7.2	6.28
Okanagan University College	25	6.7	4.32	4	6.0	5.25	23	6.0	5.39
Selkirk College	13	5.5	3.53	4	6.5	6.50	16	4.9	5.00
UC of the Cariboo	23	6.0	3.82	5	5.2	3.60	24	5.8	5.83
	71	6.1	3.87	19	5.4	4.68	70	5.8	5.54
Vancouver Island									
Camosun College	79	5.6	3.45	22	5.2	4.18	53	5.4	5.37
Malaspina University-College	29	6.0	3.03	11	5.9	4.18	35	5.8	4.97
North Island College	16	5.8	4.75	5	6.8	5.80	11	6.0	5.72
	124	5.7	3.52	38	5.6	4.39	99	5.6	5.27
Total Non Lower Mainland	213	5.8	3.58	61	5.5	4.39	188	5.7	5.35
Lower Mainland									
Public									
BCIT	3	6.0	3.66	2			4	6.0	6.75
Capilano College	6	4.8	3.50	3	5.3	5.66	11	5.2	5.54
Douglas College	4	5.2	3.00	0			5	5.2	3.60
Kwantlen University College	9	5.8	3.66	4	6.2	5.00	9	5.7	5.66
UC of the Fraser Valley	6	6.0	5.50	2	6.0	5.00	7	5.8	4.71
Langara College	10	5.8	4.20	4	5.0	4.00	10	5.0	5.60
	38	5.6	4.00	15	5.6	4.73	46	5.4	5.34
Private									
Columbia College	1			1			0		
Coquitlam College	0			0			0		
	1			1			0		
Total Lower Mainland	39	5.5	3.90	16	5.4	4.50	46	5.4	5.34
Total B.C. College Transfers	252	5.8	3.63	77	5.5	4.41	234	5.6	5.35
Total B.C. High School Entrants	676	7.0	4.22	788	5.6	3.64	661	5.5	5.14

Table 11 (Cont'd)
Course Performance of B.C. College Transfers Admitted to UVic
(1998/99 to 2002/03)
For Selected Courses

BIOL=Biology

Region/College	BIOL220			BIOL225			BIOL230		
	Admis- sion N	Avg. Cr Average	Avg. Cr Grade	Admis- sion N	Avg. Cr Average	Avg. Cr Grade	Admis- sion N	Avg. Cr Average	Avg. Cr Grade
Non Lower Mainland									
Northern B.C.									
College of New Caledonia	6	4.5	4.16	12	5.6	3.16	6	5.1	4.00
Northern Lights College	0			0			0		
Northwest Community College	0			10	5.5	3.80	6	5.6	6.00
	6	4.5	4.16	22	5.6	3.45	12	5.4	5.00
Interior/Kootenays									
College of the Rockies (EKCC)	1			11	6.7	5.36	6	7.1	6.83
Okanagan University College	4	5.5	4.00	19	6.4	4.73	21	6.3	6.66
Selkirk College	3	6.3	5.66	17	5.2	3.52	9	5.5	5.55
UC of the Cariboo	4	4.7	5.25	23	5.6	4.00	14	5.8	5.57
	12	5.4	4.75	70	5.9	4.30	50	6.1	6.18
Vancouver Island									
Camosun College	29	5.3	3.31	77	5.7	4.12	66	5.9	5.51
Malaspina University-College	16	5.6	4.18	37	5.7	3.56	23	5.9	4.65
North Island College	2			13	5.9	5.69	11	6.1	6.45
	47	5.5	3.68	127	5.7	4.12	100	5.9	5.42
Total Non Lower Mainland	65	5.4	3.92	219	5.8	4.11	162	5.9	5.62
Lower Mainland									
Public									
BCIT	3	6.0	6.33	4	6.0	4.50	3	6.0	6.00
Capilano College	5	4.8	5.40	7	5.2	5.71	6	5.5	5.66
Douglas College	1			7	5.1	3.42	3	5.0	4.66
Kwantlen University College	1			11	5.2	5.00	5	6.0	7.00
UC of the Fraser Valley	1			10	5.5	5.20	5	6.2	6.40
Langara College	4	4.5	4.50	12	5.3	4.83	6	5.6	5.50
	15	5.1	5.33	51	5.3	4.84	28	5.7	5.93
Private									
Columbia College	2			2			0		
Coquitlam College	0			1			0		
	2			3			0		
Total Lower Mainland	17	5.0	5.41	54	5.3	4.68	28	5.7	5.93
Total B.C. College Transfers	82	5.3	4.23	273	5.7	4.22	190	5.9	5.66
Total B.C. High School Entrants	753	7.0	4.35	895	7.0	4.85	378	7.0	6.02

Table 11 (Cont'd)
Course Performance of B.C. College Transfers Admitted to UVic
(1998/99 to 2002/03)
For Selected Courses

CHEM=Chemistry
ECON=Economics

Region/College	CHEM231			CHEM232			ECON305		
	Admis- sion N	Avg. Crs Average	Avg. Crs Grade	Admis- sion N	Avg. Crs Average	Avg. Crs Grade	Admis- sion N	Avg. Crs Average	Avg. Crs Grade
Non Lower Mainland									
Northern B.C.									
College of New Caledonia	18	5.0	3.05	8	5.2	2.75	1		
Northern Lights College	0			0			0		
Northwest Community College	11	5.5	3.81	8	5.5	3.75	2		
	29	5.2	3.34	16	5.4	3.25	3	5.3	3.00
Interior/Kootenays									
College of the Rockies (EKCC)	10	6.1	4.30	5	7.6	5.80	2		
Okanagan University College	26	6.3	4.19	9	6.6	5.22	21	5.5	5.66
Selkirk College	24	5.3	3.33	6	5.5	6.16	6	5.6	6.50
UC of the Cariboo	19	6.0	3.63	12	6.2	4.33	13	5.2	4.53
	79	5.9	3.81	32	6.4	5.15	42	5.5	5.47
Vancouver Island									
Camosun College	86	5.6	3.59	51	5.8	4.29	127	5.4	4.73
Malaspina University-College	32	5.7	4.21	11	5.9	4.00	38	4.8	4.07
North Island College	19	5.7	3.78	6	6.0	6.16	5	5.8	7.00
	137	5.6	3.76	68	5.8	4.41	170	5.3	4.65
Total Non Lower Mainland	245	5.7	3.73	116	5.9	4.45	215	5.3	4.79
Lower Mainland									
Public									
BCIT	3	6.3	4.66	2			1		
Capilano College	12	5.2	3.50	8	4.3	3.00	5	6.0	5.60
Douglas College	10	4.3	1.80	1			25	4.2	4.16
Kwantlen University College	13	5.5	4.30	8	5.6	5.37	26	4.8	4.15
UC of the Fraser Valley	10	5.3	3.90	4	4.7	5.25	2		
Langara College	10	5.4	3.80	7	5.4	3.28	37	4.2	4.05
	58	5.2	3.57	30	5.0	4.00	96	4.5	4.26
Private									
Columbia College	4	3.0	1.50	0			18	5.1	4.22
Coquitlam College	2			0			42	5.0	3.76
	6	3.8	1.67	0	0.0	0.00	60	5.0	3.90
Total Lower Mainland	64	5.1	3.39	30	5.0	4.00	156	4.7	4.12
Total B.C. College Transfers	309	5.5	3.66	146	5.7	4.36	371	5.1	4.51
Total B.C. High School Entrants	1216	6.5	4.25	381	7.0	5.19	325	3.5	4.48

Table 11 (Cont'd)
Course Performance of B.C. College Transfers Admitted to UVic
(1998/99 to 2002/03)
For Selected Courses

ENGL=English

Region/College	ENGL200A			ENGL201			ENGL200B		
	Admis- sion N	Avg. Cr Average	Grade	Admis- sion N	Avg. Cr Average	Grade	Admis- sion N	Avg. Cr Average	Grade
Non Lower Mainland									
Northern B.C.									
College of New Caledonia	2			5	6.6	5.60	4	6.2	6.50
Northern Lights College	2			0			1		
Northwest Community College	5	6.0	5.40	2			3	6.6	5.00
	9	6.3	5.89	7	6.4	5.71	8	6.5	6.13
Interior/Kootenays									
College of the Rockies (EKCC)	0			3	5.3	5.00	2		
Okanagan University College	11	5.9	4.81	18	6.2	5.66	21	6.3	5.47
Selkirk College	11	6.0	5.36	10	5.8	5.30	7	5.8	5.00
UC of the Cariboo	9	5.4	5.33	7	5.8	5.28	17	5.4	5.76
	31	5.8	5.16	38	6.0	5.44	47	5.9	5.53
Vancouver Island									
Camosun College	62	5.6	4.62	75	5.6	4.90	35	5.5	4.77
Malaspina University-College	13	5.6	4.00	12	5.8	4.83	12	5.5	4.75
North Island College	11	5.9	4.27	9	5.7	4.77	9	5.4	4.66
	86	5.6	4.48	96	5.6	4.88	56	5.5	4.75
Total Non Lower Mainland	126	5.7	4.75	141	5.8	5.07	111	5.7	5.18
Lower Mainland									
Public									
BCIT	2			0			2		
Capilano College	7	6.0	5.57	7	5.7	4.14	5	5.4	5.00
Douglas College	3	6.0	4.33	3	5.0	5.33	2		
Kwantlen University College	4	4.5	3.50	6	5.0	4.83	9	5.7	4.44
UC of the Fraser Valley	3	5.3	4.33	4	5.7	4.50	6	5.5	5.83
Langara College	2			4	4.0	4.75	4	5.5	5.25
	21	5.5	4.33	24	5.2	4.62	28	5.5	5.03
Private									
Columbia College	1			0			0		
Coquitlam College	0			0			0		
	1			0			0		
Total Lower Mainland	22	5.6	4.50	24	5.2	4.62	28	5.5	5.03
Total B.C. College Transfers	148	5.7	4.71	165	5.7	5.01	139	5.7	5.15
Total B.C. High School Entrants	383	0.0	4.67	322	7.0	5.09	442	5.0	5.04

Table 11 (Cont'd)
Course Performance of B.C. College Transfers Admitted to UVic
(1998/99 to 2002/03)
For Selected Courses

W S=Women's Studies
MATH=Mathematics

Region/College	W S 201			MATH200			MATH201		
	Admis- sion N	Avg. Cr Average	Avg. Cr Grade	Admis- sion N	Avg. Cr Average	Avg. Cr Grade	Admis- sion N	Avg. Cr Average	Avg. Cr Grade
Non Lower Mainland									
Northern B.C.									
College of New Caledonia	2			16	6.0	2.06	11	6.1	3.45
Northern Lights College	1			2			1		
Northwest Community College	5	5.6	4.40	3	6.0	0.00	2		
	8	5.4	4.63	21	6.1	2.09	14	6.2	3.57
Interior/Kootenays									
College of the Rockies (EKCC)	1			3	7.0	4.66	5	6.6	4.40
Okanagan University College	7	7.0	6.42	48	6.3	2.54	52	6.5	5.03
Selkirk College	5	5.7	6.40	11	6.5	3.72	10	6.5	6.20
UC of the Cariboo	9	5.5	5.33	36	6.1	3.75	34	6.0	5.41
	22	6.2	6.04	98	6.3	3.18	101	6.3	5.24
Vancouver Island									
Camosun College	53	5.5	5.83	57	5.8	2.43	86	5.7	4.23
Malaspina University-College	10	5.2	5.30	36	5.9	2.75	46	5.8	3.80
North Island College	7	5.8	5.42	13	5.3	3.84	20	5.3	3.75
	70	5.5	5.71	106	5.8	2.71	152	5.7	4.04
Total Non Lower Mainland	100	5.6	5.70	225	6.0	2.86	267	6.0	4.47
Lower Mainland									
Public									
BCIT	2			10	5.4	1.00	10	5.6	3.40
Capilano College	5	5.4	5.40	8	5.0	2.62	9	5.0	3.66
Douglas College	5	4.8	5.80	7	5.0	2.28	6	5.1	3.16
Kwantlen University College	7	6.1	5.00	23	4.7	1.78	16	5.1	3.12
UC of the Fraser Valley	3	6.6	6.33	10	5.9	5.00	11	5.8	6.18
Langara College	2			12	5.2	4.16	21	4.9	3.61
	24	5.6	5.33	70	5.1	2.68	73	5.2	3.83
Private									
Columbia College	0			8	4.8	3.37	13	5.0	4.84
Coquitlam College	1			6	6.3	3.00	8	6.0	3.12
	1			14	5.4	3.21	21	5.4	4.18
Total Lower Mainland	25	5.7	5.36	84	5.2	2.77	94	5.2	3.91
Total B.C. College Transfers	125	5.6	5.63	309	5.8	2.83	361	5.8	4.32
Total B.C. High School Entrants	165	7.0	5.35	724	5.0	3.56	671	5.4	4.68

Table 11 (Cont'd)
Course Performance of B.C. College Transfers Admitted to UVic
(1998/99 to 2002/03)
For Selected Courses

STAT=Statistics
 ANTH=Anthropology

Region/College	STAT255			STAT260			ANTH200		
	Admis- sion N	Avg. Crs Average	Avg. Crs Grade	Admis- sion N	Avg. Crs Average	Avg. Crs Grade	Admis- sion N	Avg. Crs Average	Avg. Crs Grade
Non Lower Mainland									
Northern B.C.									
College of New Caledonia	14	5.1	3.07	9	5.8	4.11	5	6.4	6.40
Northern Lights College	0			1			1		
Northwest Community College	11	5.6	3.45	0			9	5.6	4.11
	25	5.3	3.24	10	6.1	4.60	15	6.0	5.20
Interior/Kootenays									
College of the Rockies (EKCC)	11	6.5	4.18	0			6	6.1	4.83
Okanagan University College	32	6.5	5.71	45	6.2	3.91	23	5.9	6.04
Selkirk College	18	5.3	4.50	12	6.3	4.75	9	5.8	5.77
UC of the Cariboo	19	5.7	5.36	28	5.2	2.82	16	5.8	5.31
	80	6.0	5.14	85	5.9	3.67	54	5.9	5.64
Vancouver Island									
Camosun College	104	5.6	4.33	72	5.6	3.02	122	5.4	5.27
Malaspina University-College	31	6.0	5.19	35	5.7	4.22	43	5.6	5.83
North Island College	16	6.0	5.31	13	5.3	3.69	26	5.5	5.65
	151	5.7	4.61	120	5.6	3.44	191	5.5	5.45
Total Non Lower Mainland	256	5.8	4.64	215	5.7	3.59	260	5.6	5.47
Lower Mainland									
Public									
BCIT	2			7	6.0	2.71	2		
Capilano College	16	5.2	6.06	8	4.7	3.37	18	5.5	6.00
Douglas College	6	5.1	3.00	13	5.0	2.76	11	5.0	5.36
Kwantlen University College	16	4.9	3.31	20	4.6	3.05	15	4.8	6.00
UC of the Fraser Valley	17	5.2	5.35	7	5.7	4.00	3	6.0	6.00
Langara College	14	5.2	4.42	19	4.8	3.68	13	5.1	4.76
	71	5.1	4.69	74	5.0	3.25	62	5.2	5.63
Private									
Columbia College	8	5.2	3.62	16	4.7	2.56	0		
Coquitlam College	2			10	5.4	2.40	0		
	10	5.2	3.50	26	5.0	2.50	0		
Total Lower Mainland	81	5.1	4.54	100	5.0	3.06	62	5.2	5.63
Total B.C. College Transfers	337	5.6	4.62	315	5.5	3.42	322	5.5	5.50
Total B.C. High School Entrants	1036	7.0	5.17	506	6.0	3.75	828	6.0	5.59

Table 11 (Cont'd)
Course Performance of B.C. College Transfers Admitted to UVic
(1998/99 to 2002/03)
For Selected Courses

GRS=Greek and Roman Studies
 PSYC=Psychology

Region/College	GRS 200			PSYC336			PSYC210		
	Admis- sion N	Avg. Cr Average	Avg. Cr Grade	Admis- sion N	Avg. Cr Average	Avg. Cr Grade	Admis- sion N	Avg. Cr Average	Avg. Cr Grade
Non Lower Mainland									
Northern B.C.									
College of New Caledonia	5	6.0	6.00	4	5.7	6.25	10	6.2	6.10
Northern Lights College	0			1			1		
Northwest Community College	2			8	5.2	6.00	11	5.5	3.63
	7	5.9	5.86	13	5.5	6.00	22	5.9	4.77
Interior/Kootenays									
College of the Rockies (EKCC)	2			5	6.4	6.20	9	6.1	4.66
Okanagan University College	26	6.1	5.92	33	5.9	6.09	43	5.5	4.67
Selkirk College	9	5.0	4.88	10	5.6	5.60	15	6.0	4.73
UC of the Cariboo	13	5.6	5.07	9	5.6	4.66	18	5.7	5.00
	50	5.8	5.58	57	5.8	5.79	85	5.7	4.75
Vancouver Island									
Camosun College	101	5.7	5.28	168	5.4	5.36	164	5.4	4.06
Malaspina University-College	21	5.6	5.23	38	5.7	5.97	26	5.5	4.57
North Island College	10	6.0	5.90	12	5.5	6.16	26	5.6	4.88
	132	5.7	5.32	218	5.5	5.51	216	5.4	4.22
Total Non Lower Mainland	189	5.7	5.41	288	5.5	5.59	323	5.5	4.40
Lower Mainland									
Public									
BCIT	2			1			4	5.2	6.00
Capilano College	7	6.4	5.42	14	5.1	5.85	19	5.1	4.36
Douglas College	10	5.4	4.80	13	5.2	3.92	10	5.6	4.30
Kwantlen University College	5	6.0	5.20	13	5.5	5.69	19	5.4	4.68
UC of the Fraser Valley	5	6.2	5.40	9	5.0	6.77	10	5.2	5.60
Langara College	9	5.7	3.55	17	5.0	5.29	24	4.6	4.75
	38	5.9	4.76	67	5.2	5.41	86	5.1	4.75
Private									
Columbia College	0			3	3.60	5.00	3	4.00	4.33
Coquitlam College	1			2			2		
	1			5	4.2	4.00	5	4.4	3.80
Total Lower Mainland	39	5.9	4.66	72	5.1	5.32	91	5.1	4.70
Total B.C. College Transfers	228	5.8	5.28	360	5.4	5.53	414	5.4	4.46
Total B.C. High School Entrants	864	5.0	5.25	250		6.21	674	6.0	4.81

Table 11 (Cont'd)
Course Performance of B.C. College Transfers Admitted to UVic
(1998/99 to 2002/03)
For Selected Courses

PSYC=Psychology

<u>Region/College</u>	<u>PSYC215A</u>			<u>PSYC330</u>			<u>PSYC332</u>		
	<u>Admis- sion N</u>	<u>Avg. Cr Average</u>	<u>Avg. Cr Grade</u>	<u>Admis- sion N</u>	<u>Avg. Cr Average</u>	<u>Avg. Cr Grade</u>	<u>Admis- sion N</u>	<u>Avg. Cr Average</u>	<u>Avg. Cr Grade</u>
Non Lower Mainland									
<u>Northern B.C.</u>									
College of New Caledonia	10	5.9	6.10	4	5.7	6.25	3	5.6	7.66
Northern Lights College	1			1			0		
Northwest Community College	15	5.6	3.86	7	6.2	6.71	5	5.4	5.80
	26	5.8	4.65	12	6.1	6.50	8	5.5	6.50
<u>Interior/Kootenays</u>									
College of the Rockies (EKCC)	14	5.2	3.71	3	5.3	4.66	7	5.8	6.42
Okanagan University College	55	5.6	4.80	34	5.5	5.79	36	5.5	6.55
Selkirk College	19	5.7	5.63	15	5.9	6.33	13	5.3	6.30
UC of the Cariboo	21	5.7	4.76	12	5.5	6.25	10	5.9	7.10
	109	5.6	4.80	64	5.6	5.95	66	5.6	6.57
<u>Vancouver Island</u>									
Camosun College	189	5.3	4.22	166	5.4	5.24	178	5.6	5.93
Malaspina University-College	31	5.6	4.83	36	5.6	5.50	25	5.9	6.88
North Island College	36	5.7	4.97	17	5.4	5.29	11	5.8	5.27
	256	5.4	4.40	219	5.4	5.29	214	5.6	6.01
Total Non Lower Mainland	391	5.5	4.53	295	5.5	5.48	288	5.6	6.15
Lower Mainland									
<u>Public</u>									
BCIT	3	5.3	5.66	1			3	5.3	7.00
Capilano College	20	5.2	4.85	11	4.7	6.90	11	5.2	5.90
Douglas College	15	4.5	3.60	8	5.0	5.12	7	5.2	5.14
Kwantlen University College	17	5.6	5.35	13	5.6	5.76	15	6.2	6.60
UC of the Fraser Valley	13	5.3	6.23	9	4.6	6.77	3	4.0	7.00
Langara College	30	4.6	5.13	26	4.8	5.11	10	4.8	6.10
	98	5.0	5.04	68	4.9	5.76	49	5.4	6.18
<u>Private</u>									
Columbia College	4	4.7	6.50	2			1		
Coquitlam College	3	5.0	1.00	1			0		
	7	4.8	4.14	3			1		
Total Lower Mainland	105	5.0	4.98	71	4.9	5.71	50	5.3	6.10
Total B.C. College Transfers	496	5.4	4.62	366	5.4	5.52	338	5.6	6.14
Total B.C. High School Entrants	897	6.0	5.25	267	6.0	6.34	371	5.0	6.15

Table 11 (Cont'd)
Course Performance of B.C. College Transfers Admitted to UVic
(1998/99 to 2002/03)
For Selected Courses

SOCI=Sociology
 IB = International Business
 COM=Commerce

<u>Region/College</u>	<u>SOCI202</u>			<u>IB 301</u>			<u>COM220</u>		
	<u>Admis- sion N</u>	<u>Avg. Cr Average</u>	<u>Avg. Cr Grade</u>	<u>Admis- sion N</u>	<u>Avg. Cr Average</u>	<u>Avg. Cr Grade</u>	<u>Admis- sion N</u>	<u>Avg. Cr Average</u>	<u>Avg. Cr Grade</u>
Non Lower Mainland									
<u>Northern B.C.</u>									
College of New Caledonia	4	6.6	5.00	2			3		
Northern Lights College	2			1			1		
Northwest Community College	8	5.0	4.87	1			1		
	14	5.7	5.14	4	6.3	6.25	5	6.0	5.40
<u>Interior/Kootenays</u>									
College of the Rockies (EKCC)	2			2			3	6.3	6.00
Okanagan University College	33	6.0	6.12	16	6.5	5.81	22	6.4	5.54
Selkirk College	2			5	6.2	7.20	4	5.7	5.25
UC of the Cariboo	9	5.0	6.22	13	5.7	5.61	11	6.0	5.81
	46	5.7	6.13	36	6.2	5.86	40	6.2	5.62
<u>Vancouver Island</u>									
Camosun College	143	5.5	6.00	58	6.2	5.81	62	5.7	4.91
Malaspina University-College	27	5.3	5.96	22	5.3	5.27	20	5.3	5.15
North Island College	12	5.5	5.08	5	6.4	6.40	5	6.0	6.20
	182	5.5	5.93	85	6.0	5.70	87	5.6	5.04
Total Non Lower Mainland	242	5.5	5.92	125	6.0	5.77	132	5.8	5.23
Lower Mainland									
<u>Public</u>									
BCIT	5	6.0	6.40	0			1		
Capilano College	20	5.0	6.05	5	6.2	6.60	8	5.5	5.25
Douglas College	5	5.4	4.20	15	5.8	5.20	9	4.6	3.00
Kwantlen University College	18	5.3	5.77	7	5.5	4.71	11	5.0	3.81
UC of the Fraser Valley	5	5.6	6.40	6	6.0	6.50	5	6.2	7.40
Langara College	14	5.1	6.00	21	6.0	4.90	2		
	67	5.3	5.88	54	5.9	5.29	36	5.2	4.58
<u>Private</u>									
Columbia College	1			8	6.3	5.62	8	5.7	4.50
Coquitlam College	1			4	5.2	3.50	11	5.6	3.63
	2			12	5.9	4.91	19	5.6	4.00
Total Lower Mainland	69	5.3	5.85	66	5.9	5.22	55	5.4	4.38
Total B.C. College Transfers	311	5.5	5.91	191	6.0	5.58	187	5.7	4.98
Total B.C. High School Entrants	744	5.0	5.57	93		7.03	241	4.5	5.17

Table 11 (Cont'd)
Course Performance of B.C. College Transfers Admitted to UVic
(1998/99 to 2002/03)
For Selected Courses

COM=Commerce

<u>Region/College</u>	<u>COM 240</u>			<u>COM 250</u>			<u>COM 340</u>		
	<u>Admis-</u>	<u>Avg.</u>		<u>Admis-</u>	<u>Avg.</u>		<u>Admis-</u>	<u>Avg.</u>	
	<u>sion</u>	<u>Crs</u>		<u>sion</u>	<u>Crs</u>		<u>sion</u>	<u>Crs</u>	
	<u>N</u>	<u>Average</u>	<u>Grade</u>	<u>N</u>	<u>Average</u>	<u>Grade</u>	<u>N</u>	<u>Average</u>	<u>Grade</u>
Non Lower Mainland									
<u>Northern B.C.</u>									
College of New Caledonia	2			3	5.3	4.00	1		
Northern Lights College	1			1			1		
Northwest Community College	2			1			1		
	5	6.2	3.00	5	6.0	4.60	3	6.7	5.00
<u>Interior/Kootenays</u>									
College of the Rockies (EKCC)	3	6.3	5.33	3	6.3	5.66	3	6.3	4.33
Okanagan University College	17	6.5	4.29	16	6.2	5.37	13	6.5	4.46
Selkirk College	6	6.1	4.83	5	5.8	5.80	5	6.2	6.00
UC of the Cariboo	19	5.7	4.05	16	5.6	5.25	11	5.6	4.36
	45	6.1	4.33	40	5.9	5.40	32	6.1	4.65
<u>Vancouver Island</u>									
Camosun College	102	5.8	3.34	57	5.8	4.63	65	6.2	4.72
Malaspina University-College	29	5.1	3.68	18	5.2	4.50	19	5.3	5.26
North Island College	6	6.1	6.33	3	6.0	6.00	5	6.4	5.40
	137	5.7	3.54	78	5.7	4.65	89	6.0	4.87
Total Non Lower Mainland	187	5.8	3.72	123	5.8	4.89	124	6.1	4.82
Lower Mainland									
<u>Public</u>									
BCIT	1			1			1		
Capilano College	10	5.9	4.00	7	5.5	5.42	7	5.7	5.57
Douglas College	23	5.3	3.17	3	4.3	4.00	15	5.8	4.46
Kwantlen University College	18	5.3	2.27	11	5.4	5.09	9	6.0	2.77
UC of the Fraser Valley	6	6.0	4.50	4	6.0	6.50	6	6.0	5.83
Langara College	49	6.0	2.28	5	4.6	5.80	32	6.4	3.84
	107	5.7	2.77	31	5.3	5.38	70	6.1	4.18
<u>Private</u>									
Columbia College	12	5.8	3.41	15	5.3	4.00	7	6.4	3.85
Coquitlam College	14	5.2	2.50	15	5.2	3.80	4	5.2	4.00
	26	5.5	2.92	30	5.3	3.90	11	6.0	3.90
Total Lower Mainland	133	5.7	2.80	61	5.3	4.65	81	6.1	4.14
Total B.C. College Transfers	320	5.7	3.34	184	5.6	4.81	205	6.1	4.55
Total B.C. High School Entrants	178	4.2	4.78	253	4.2	5.75	72	0.0	5.54

Table 11 (Cont'd)
Course Performance of B.C. College Transfers Admitted to UVic
(1998/99 to 2002/03)
For Selected Courses

COM=Commerce
ENGR=Engineering
C Sc=Computing Science

Region/College	COM350			ENGR240			C Sc212		
	Admis- sion N	Avg. Cr Average	Grade	Admis- sion N	Avg. Cr Average	Grade	Admis- sion N	Avg. Cr Average	Grade
Non Lower Mainland									
<u>Northern B.C.</u>									
College of New Caledonia	1			11	5.8	5.72	3	5.3	4.66
Northern Lights College	1			0			0		
Northwest Community College	1			2			1		
	3	6.7	6.00	13	5.8	5.15	4	5.2	4.25
<u>Interior/Kootenays</u>									
College of the Rockies (EKCC)	3	6.3	6.33	2			5	6.2	4.40
Okanagan University College	13	6.5	5.69	37	6.7	6.02	20	6.1	5.90
Selkirk College	6	6.1	6.16	13	6.5	5.53	7	6.8	7.28
UC of the Cariboo	12	5.6	5.50	37	5.8	5.83	13	4.9	4.76
	34	6.1	5.76	89	6.3	5.87	45	5.9	5.62
<u>Vancouver Island</u>									
Camosun College	66	6.2	5.46	109	5.5	5.49	68	5.4	5.16
Malaspina University-College	22	5.4	5.63	43	5.9	5.69	14	5.2	5.92
North Island College	5	6.4	6.40	9	5.2	5.88	8	5.7	5.50
	93	6.0	5.55	161	5.6	5.57	90	5.4	5.31
Total Non Lower Mainland	130	6.1	5.62	263	5.8	5.65	139	5.5	5.38
Lower Mainland									
<u>Public</u>									
BCIT	1			3	7.3	6.33	5	6.6	6.40
Capilano College	7	5.7	5.85	9	4.6	5.44	9	4.8	5.66
Douglas College	16	5.7	5.75	7	5.1	4.14	10	4.9	4.00
Kwantlen University College	9	6.0	3.88	11	5.1	5.54	14	5.0	5.78
UC of the Fraser Valley	6	6.0	6.50	14	5.5	5.71	4	5.5	5.00
Langara College	33	6.4	4.60	16	4.9	5.18	15	5.4	5.80
	72	6.1	5.06	60	5.2	5.34	57	5.2	5.45
<u>Private</u>									
Columbia College	8	6.3	6.25	15	4.4	4.06	13	4.8	4.23
Coquitlam College	5	5.2	5.60	6	6.1	4.83	12	5.7	5.33
	13	5.9	6.00	21	4.9	4.28	25	6.2	5.66
Total Lower Mainland	85	6.0	5.21	81	5.1	5.07	82	5.2	5.24
Total B.C. College Transfers	215	6.1	5.45	344	5.7	5.51	221	5.4	5.33
Total B.C. High School Entrants	84	0.0	6.41	614	5.0	5.92	531	5.0	4.89

C Sc=Computing Science

Table 11 (Cont'd)
Course Performance of B.C. College Transfers Admitted to UVic
(1998/99 to 2002/03)
For Selected Courses

<u>Region/College</u>	<u>C Sc230</u>		
	<u>Admis- sion N</u>	<u>Average</u>	<u>Avg. Crs Grade</u>
Non Lower Mainland			
<u>Northern B.C.</u>			
College of New Caledonia	9	6.1	4.55
Northern Lights College	0		
Northwest Community College	0		
	9	6.1	4.55
<u>Interior/Kootenays</u>			
College of the Rockies (EKCC)	5	6.6	6.00
Okanagan University College	33	6.8	5.48
Selkirk College	6	6.6	6.33
UC of the Cariboo	29	5.6	5.27
	73	6.3	5.50
<u>Vancouver Island</u>			
Camosun College	101	5.6	4.48
Malaspina University-College	26	6.0	5.76
North Island College	11	5.6	5.18
	138	5.7	4.78
Total Non Lower Mainland	220	5.9	5.01
Lower Mainland			
<u>Public</u>			
BCIT	8	6.2	3.87
Capilano College	4	4.5	6.00
Douglas College	8	5.5	4.00
Kwantlen University College	15	5.2	5.46
UC of the Fraser Valley	8	5.6	6.50
Langara College	15	5.6	5.26
	58	5.5	5.17
<u>Private</u>			
Columbia College	13	4.3	3.30
Coquitlam College	9	6.1	5.11
	22	5.0	4.04
Total Lower Mainland	80	5.4	4.86
Total B.C. College Transfers	300	5.8	4.97
Total B.C. High School Entrants	558	4.3	5.09

Figure 2a

Academic Performance Comparisons of B.C. High School Entrants and B.C. College Transfers Admitted to UVic

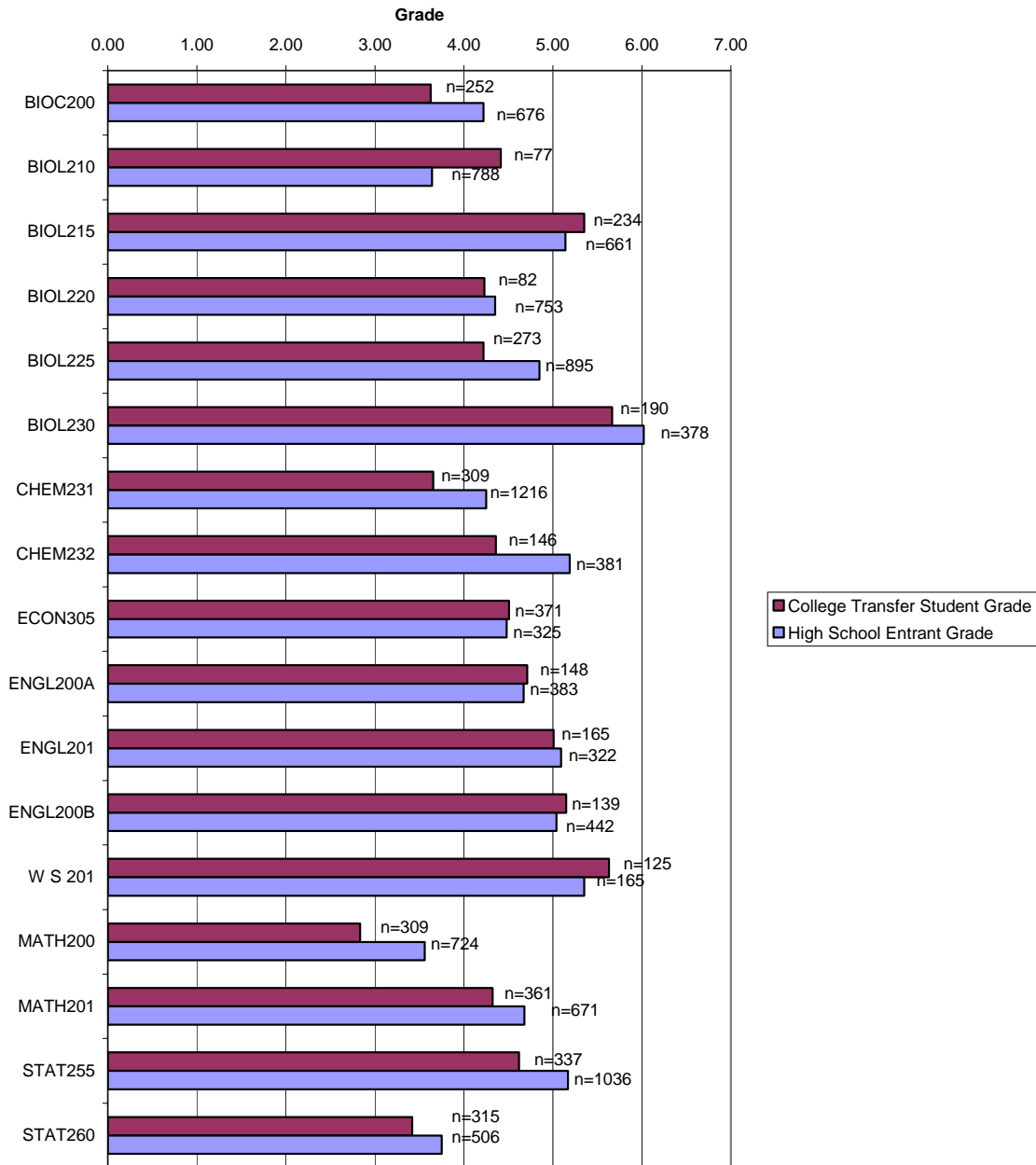


Figure 2b

Academic Performance Comparisons of B.C. High School Entrants and B.C. College Transfers Admitted to UVic

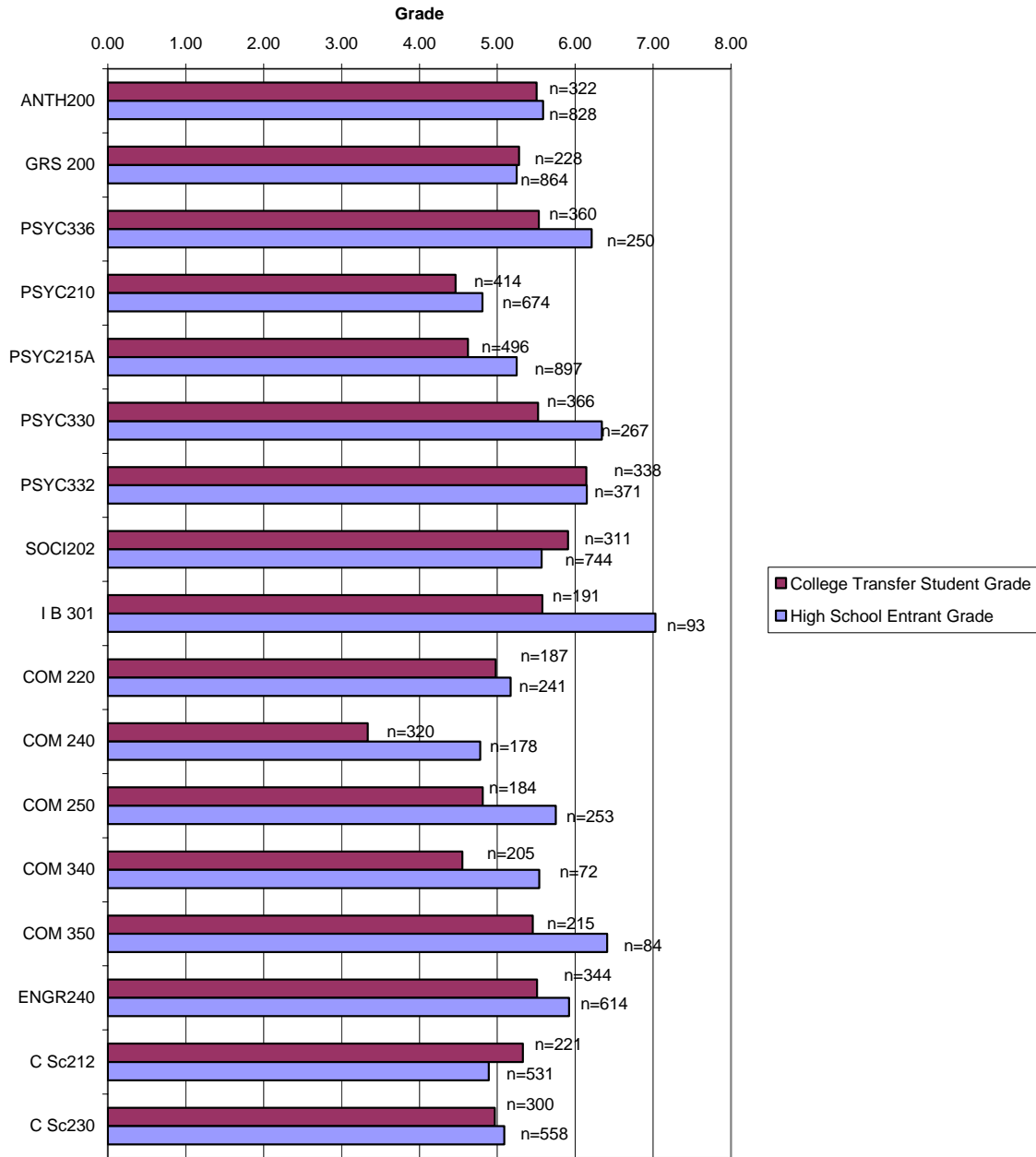


Table 12
Graduation Rates of B.C. College Transfers Admitted to UVic by Total Transfer Credit Units
(1998/99 to 1999/00)

Region/College	<15		15-17		17.5-19.5		20-22	
	# of Students	% Grad	# of Students	% Grad	# of Students	% Grad	# of Students	% Grad
Non Lower Mainland								
Northern B.C.								
College of New Caledonia	7	57.1	5	60.0	3	100.0	0	
Northern Lights College	3	100.0	0		0		0	
Northwest Community College	8	62.5	13	69.2	2	50.0	0	
	18	66.7	18	66.7	5	80.0	0	
Interior/Kootenays								
College of the Rockies (EKCC)	4	0.0	5	80.0	4	50.0	1	100.0
Okanagan University College	28	50.0	38	71.1	8	62.5	4	100.0
Selkirk College	6	50.0	23	78.3	4	100.0	4	50.0
UC of the Cariboo	22	72.7	25	72.0	5	80.0	6	50.0
	60	55.0	91	73.6	21	71.4	15	66.7
Vancouver Island								
Camosun College	94	47.9	84	57.1	79	69.6	35	77.1
Malaspina University-College	29	55.2	28	75.0	21	71.4	17	76.5
North Island College	17	58.8	14	71.4	8	62.5	7	57.1
	140	50.7	126	62.7	108	69.4	59	74.6
Total Non Lower Mainland	218	53.2	235	67.2	134	70.1	74	73.0
Lower Mainland								
Public								
BCIT	7	42.9	5	20.0	0		0	
Capilano College	13	46.2	10	40.0	7	42.9	4	50.0
Douglas College	14	28.6	5	20.0	9	22.2	5	60.0
Kwantlen University College	16	75.0	6	83.3	6	50.0	2	100.0
UC of the Fraser Valley	4	0.0	6	100.0	8	87.5	3	33.3
Langara College	7	57.1	9	33.3	10	60.0	7	85.7
	61	47.5	41	48.8	40	52.5	21	66.7
Private								
Columbia College	4	50.0	7	57.1	7	85.7	3	66.7
Coquitlam College	2	50.0	6	50.0	4	50.0	2	50.0
	6	50.0	13	53.8	11	72.7	5	60.0
Total Lower Mainland	67	47.8	54	50.0	51	56.9	26	65.4
Total B.C. College Transfers	285	51.9	289	64.0	185	66.5	100	71.0

Table 12 (Cont'd)
Graduation Rates of B.C. College Transfers Admitted to UVic by Total Transfer Credit Units
(1998/99 to 1999/00)

Region/College	22.5-24.5		25-27		≥27.5		Total	
	# of Students	% Grad	# of Students	% Grad	# of Students	% Grad	# of Students	% Grad
Non Lower Mainland								
Northern B.C.								
College of New Caledonia	1	100.0	4	50.0	24	45.8	44	54.5
Northern Lights College	0		3	33.3	5	60.0	11	63.6
Northwest Community College	4	50.0	1	100.0	7	57.1	35	62.9
	5	60.0	8	25.0	36	50.0	90	58.9
Interior/Kootenays								
College of the Rockies (EKCC)	4	100.0	0		19	57.9	37	59.5
Okanagan University College	20	60.0	20	70.0	89	71.9	207	67.6
Selkirk College	8	75.0	3	100.0	25	64.0	73	71.2
UC of the Cariboo	13	69.2	10	70.0	47	70.2	128	70.3
	45	68.9	33	72.7	180	68.9	445	68.3
Vancouver Island								
Camosun College	70	70.0	85	71.8	311	76.8	758	69.1
Malaspina University-College	17	64.7	35	80.0	134	76.1	281	73.3
North Island College	5	80.0	6	100.0	26	88.5	83	74.7
	92	69.6	126	75.4	471	77.3	1,122	70.6
Total Non Lower Mainland	142	69.0	167	72.5	687	73.7	1,657	69.3
Lower Mainland								
Public								
BCIT	2	50.0	3	100.0	57	49.1	74	48.6
Capilano College	5	40.0	7	71.4	32	71.9	78	57.7
Douglas College	13	84.6	4	100.0	103	76.7	153	68.0
Kwantlen University College	9	44.4	7	85.7	69	78.3	115	74.8
UC of the Fraser Valley	8	75.0	8	62.5	13	69.2	50	68.0
Langara College	9	66.7	19	63.2	161	80.7	222	75.2
	46	65.2	48	72.9	435	74.3	692	68.2
Private								
Columbia College	2	50.0	2	0.0	2	0.0	27	55.6
Coquitlam College	3	66.7	1	100.0	1	100.0	19	57.9
	5	60.0	3	33.3	3	33.3	46	56.5
Total Lower Mainland	51	64.7	51	70.6	438	74.0	738	67.5
Total B.C. College Transfers	193	67.9	218	72.0	1,125	73.8	2,395	68.8

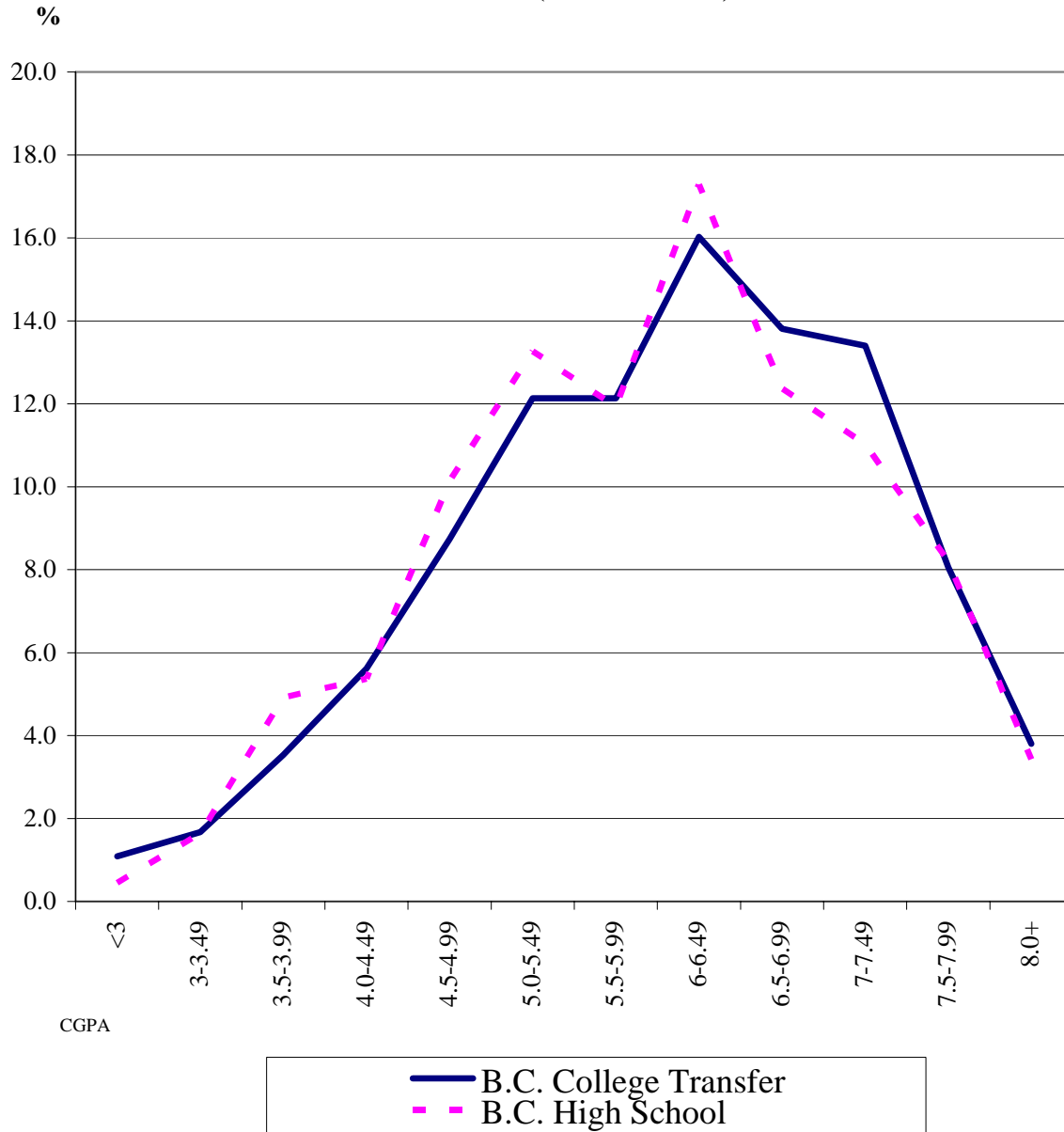
Table 13
Cumulative UVic GPA of B.C. College Transfers Admitted to UVic at time of Graduation
(1998/99 to 2002/03)

Region/College	<u><3</u>	<u>3-3.49</u>	<u>3.5-3.99</u>	<u>4.0-4.49</u>	<u>4.5-4.99</u>	<u>5.0-5.49</u>	<u>5.5-5.99</u>
Non Lower Mainland							
Northern B.C.							
College of New Caledonia	0	2	0	3	2	3	1
Northern Lights College	0	0	0	0	1	0	0
Northwest Community College	0	0	3	2	3	1	3
	<u>0</u>	<u>2</u>	<u>3</u>	<u>5</u>	<u>6</u>	<u>4</u>	<u>4</u>
Interior/Kootenays							
College of the Rockies (EKCC)	0	0	0	1	4	2	8
Okanagan University College	0	1	7	7	18	20	28
Selkirk College	1	1	0	2	2	4	6
UC of the Cariboo	0	0	2	5	12	15	12
	<u>1</u>	<u>2</u>	<u>9</u>	<u>15</u>	<u>36</u>	<u>41</u>	<u>54</u>
Vancouver Island							
Camosun College	9	14	27	46	83	100	93
Malaspina University-College	1	4	6	16	26	44	35
North Island College	0	0	1	5	8	9	7
	<u>10</u>	<u>18</u>	<u>34</u>	<u>67</u>	<u>117</u>	<u>153</u>	<u>135</u>
Total Non Lower Mainland	<u>11</u>	<u>22</u>	<u>46</u>	<u>87</u>	<u>159</u>	<u>198</u>	<u>193</u>
Lower Mainland							
Public							
BCIT	0	0	1	1	1	6	1
Capilano College	1	0	2	3	5	9	5
Douglas College	0	5	5	5	3	14	20
Kwantlen University College	2	2	5	6	6	19	15
UC of the Fraser Valley	0	0	2	3	3	4	3
Langara College	7	4	12	13	10	12	25
	<u>10</u>	<u>11</u>	<u>27</u>	<u>31</u>	<u>28</u>	<u>64</u>	<u>69</u>
Private							
Columbia College	1	1	3	3	3	3	5
Coquitlam College	2	3	2	3	3	3	1
	<u>3</u>	<u>4</u>	<u>5</u>	<u>6</u>	<u>6</u>	<u>6</u>	<u>6</u>
Total Lower Mainland	<u>13</u>	<u>15</u>	<u>32</u>	<u>37</u>	<u>34</u>	<u>70</u>	<u>75</u>
Total B.C. College Transfers	24	37	78	124	193	268	268
Total B.C. High School Entrants	3	11	33	36	68	89	80

Table 13 (Cont'd)
Cumulative UVic GPA of B.C. College Transfers Admitted to UVic at Time of Graduation
(1998/99 to 2002/03)

Region/College	6-6.49	6.5-6.99	7-7.49	7.5-7.99	8.0+	# of Students	Cumulative GPA
Non Lower Mainland							
Northern B.C.							
College of New Caledonia	5	2	9	1	0	28	5.92
Northern Lights College	4	0	1	0	0	6	6.25
Northwest Community College	2	1	2	3	0	20	5.69
	11	3	12	4	0	54	5.88
Interior/Kootenays							
College of the Rockies (EKCC)	3	11	4	1	4	38	6.34
Okanagan University College	26	26	21	8	5	167	5.99
Selkirk College	18	10	12	13	5	74	6.59
UC of the Cariboo	11	14	16	6	1	94	6.01
	58	61	53	28	15	373	6.15
Vancouver Island							
Camosun College	123	103	74	47	15	734	5.85
Malaspina University-College	40	35	31	16	5	259	5.90
North Island College	21	9	9	9	4	82	6.21
	184	147	114	72	24	1,075	5.89
Total Non Lower Mainland	253	211	179	104	39	1,502	5.95
Lower Mainland							
Public							
BCIT	10	6	6	7	4	43	6.56
Capilano College	11	6	11	8	1	62	6.11
Douglas College	30	22	32	25	8	169	6.37
Kwantlen University College	7	13	17	6	3	101	5.86
UC of the Fraser Valley	9	10	3	2	5	44	6.27
Langara College	32	37	48	26	24	250	6.30
	99	94	117	74	45	669	6.24
Private							
Columbia College	2	0	0	0	0	21	4.79
Coquitlam College	0	0	0	0	0	17	4.15
	2	0	0	0	0	38	4.47
Total Lower Mainland	101	94	117	74	45	707	6.14
Total B.C. College Transfers	354	305	296	178	84	2,209	6.02
Total B.C. High School Entrants	116	83	74	55	23	671	4.30

Figure 3
Cumulative UVic GPA Comparison
of B.C. High School Entrants and B.C. College Transfers Admitted to UVic
Who Graduated (1998/99-2002/03)



Source: Table 13

Section C

PROFILE OF B.C. COLLEGE TRANSFER STUDENTS WHO GRADUATED

Table 14
Academic Performance of B.C. College Transfers Admitted to UVic Who Graduated
(admitted and graduated between 1998/99 and 2002/03)

Region/College	# of Students	Admission GPA	1st Session GPA	Graduating GPA	Cumulative GPA
Non Lower Mainland					
Northern B.C.					
College of New Caledonia	38	5.4	5.57	6.01	5.92
Northern Lights College	9	6.5	6.64	6.49	6.25
Northwest Community College	26	5.9	5.08	5.88	5.69
	73	5.7	5.53	6.02	5.88
Interior/Kootenays					
College of the Rockies (EKCC)	43	6.4	6.00	6.53	6.34
Okanagan University College	197	5.9	5.68	6.17	5.99
Selkirk College	92	6.0	5.99	6.56	6.59
UC of the Cariboo	118	5.7	5.60	6.07	6.01
	450	5.9	5.75	6.26	6.15
Vancouver Island					
Camosun College	902	5.7	5.51	5.94	5.85
Malaspina University-College	303	5.8	5.54	5.99	5.90
North Island College	97	5.8	5.87	6.42	6.21
	1,302	5.7	5.54	5.99	5.89
Total Non Lower Mainland	1,825	5.7	5.59	6.06	5.95
Lower Mainland					
Public					
BCIT	52	6.4	6.20	6.66	6.56
Capilano College	86	5.5	5.70	6.14	6.11
Douglas College	205	5.4	6.01	6.37	6.37
Kwantlen University College	137	5.5	5.45	5.89	5.86
UC of the Fraser Valley	53	5.7	6.11	6.48	6.27
Langara College	344	5.3	6.09	6.30	6.30
	877	5.5	5.94	6.27	6.24
Private					
Columbia College	27	4.8	4.69	4.83	4.79
Coquitlam College	27	4.7	4.31	4.22	4.15
	54	4.8	4.50	4.53	4.47
Total Lower Mainland	931	5.4	5.86	6.17	6.14
Total B.C. College Transfers	2,756	5.6	5.68	6.09	6.02

Note:

Cumulative GPA was not available for 547 cases. Average cumulative GPA is therefore based on 2,209 cases overall.

Table 15
Graduation Area of B.C. College Transfers Admitted to UVic
(1998/99 to 2002/03)

Region/College	PACI	EDUC	ANTH	LING	COM	BIOL	NURS	S W	ENGN	CSC	CYC
Non Lower Mainland											
Northern B.C.											
College of New Caledonia	0	0	1	0	3	3	4	3	0	1	1
Northern Lights College	0	0	0	0	1	0	1	3	0	0	2
Northwest Community College	0	0	1	1	1	4	0	6	0	0	0
	0	0	2	1	5	7	5	12	0	1	3
Interior/Kootenays											
College of the Rockies (EKCC)	0	0	0	0	3	2	0	5	2	1	1
Okanagan University College	0	2	4	1	12	10	4	8	19	7	7
Selkirk College	0	0	0	0	7	3	10	19	2	1	13
UC of the Cariboo	0	1	5	1	13	5	6	1	12	1	4
	0	3	9	2	35	20	20	33	35	10	25
Vancouver Island											
Camosun College	15	5	38	17	76	40	134	21	31	36	30
Malaspina University-College	3	4	9	2	28	11	12	34	6	20	5
North Island College	0	0	3	4	6	5	19	8	2	5	2
	18	9	50	23	110	56	165	63	39	61	37
Total Non Lower Mainland	18	12	61	26	150	83	190	108	74	72	65
Lower Mainland											
Public											
BCIT	0	0	0	0	1	1	27	0	16	0	0
Capilano College	0	3	1	0	6	7	6	6	3	1	4
Douglas College	2	1	3	0	19	0	104	4	4	2	23
Kwantlen University College	0	0	3	1	13	6	33	5	8	2	3
UC of the Fraser Valley	0	0	0	1	5	7	3	4	3	1	1
Langara College	3	5	0	1	37	3	174	19	2	6	4
	5	9	7	3	81	24	347	38	36	12	35
Private											
Columbia College	2	0	0	0	7	0	0	0	2	5	0
Coquitlam College	1	0	0	1	6	0	0	0	1	0	0
	3	0	0	1	13	0	0	0	3	5	0
Total Lower Mainland	8	9	7	4	94	24	347	38	39	17	35
Total B.C. College Transfers	26	21	68	30	244	107	537	146	113	89	100
Total B.C. High School Entrants	4	8	33	17	102	86	1	7	20	38	11

PACI - Pacific & Asian Studies, EDUC - Education, ANTH - Anthropology, LING - Linguistics, COM - Commerce, BIOL - Biology, NURS - Nursing, S W - Social Work, ENGN - Engineering, CSC - Computer Science, CYC - Child & Youth Care

Table 15 (Cont'd)
Graduation Area of B.C. College Transfers Admitted to UVic
(1998/99 to 2002/03)

Region/College	VART	ECON	ENGL	GEOG	H A	HIST	P E	POLI	PSYC	SOCI	OTH	# of Students
Non Lower Mainland												
Northern B.C.												
College of New Caledonia	0	0	4	3	0	2	1	0	4	1	7	38
Northern Lights College	0	0	2	0	0	0	0	0	0	0	0	9
Northwest Community College	0	1	3	2	0	1	0	0	1	2	3	26
	0	1	9	5	0	3	1	0	5	3	10	73
Interior/Kootenays												
College of the Rockies (EKCC)	0	0	2	1	0	0	0	1	3	0	22	43
Okanagan University College	3	5	17	9	2	13	2	6	16	6	44	197
Selkirk College	1	0	5	2	0	3	0	1	4	2	19	92
UC of the Cariboo	2	7	7	4	3	6	8	10	8	2	12	118
	6	12	31	16	5	22	10	18	31	10	97	450
Vancouver Island												
Camosun College	18	41	63	43	13	44	2	21	72	40	102	902
Malaspina University-College	9	14	13	21	0	17	18	2	26	4	45	303
North Island College	3	0	5	7	0	5	0	3	7	2	11	97
	30	55	81	71	13	66	20	26	105	46	158	1,302
Total Non Lower Mainland	36	68	121	92	18	91	31	44	141	59	265	1,825
Lower Mainland												
Public												
BCIT	0	0	1	2	0	0	0	0	1	1	2	52
Capilano College	2	3	4	7	5	4	0	8	3	3	10	86
Douglas College	1	12	2	3	1	5	3	2	6	0	8	205
Kwantlen University College	5	15	6	3	3	6	0	7	3	1	14	137
UC of the Fraser Valley	1	0	2	1	1	3	1	3	3	1	12	53
Langara College	4	23	6	13	3	4	0	7	14	3	13	344
	13	53	21	29	13	22	4	27	30	9	59	877
Private												
Columbia College	0	7	0	0	0	0	0	0	3	0	1	27
Coquitlam College	0	16	0	0	0	0	0	0	1	0	1	27
	0	23	0	0	0	0	0	0	4	0	2	54
Total Lower Mainland	13	76	21	29	13	22	4	27	34	9	61	931
Total B.C. College Transfers	49	144	142	121	31	113	35	71	175	68	326	2,756
Total B.C. High School Entrants	25	59	66	39	9	69	3	49	52	35	198	931

VART - Visual Arts, ECON - Economics, ENGL - English, GEOG - Geography, H A - History in Art, HIST - History
P E - Physical Education, POLI - Political Science, PSYC - Psychology, SOCI - Sociology, OTH - Other

Table 16
Credentials Awarded to B.C. College Transfers Admitted to UVic
(1998/99 to 2002/03)

Region/College	# of												
	Students	BA	BCOM	BED	BENG	BFA	BMUS	BSC	BSN	BSW	CERT	DIPL	LLB
Non Lower Mainland													
Northern B.C.													
College of New Caledonia	38	14	3	4	0	0	0	8	4	3	2	0	0
Northern Lights College	9	4	1	0	0	0	0	0	1	3	0	0	0
Northwest Community College	26	10	1	1	0	0	0	7	0	6	0	0	1
	<u>73</u>	<u>28</u>	<u>5</u>	<u>5</u>	<u>0</u>	<u>0</u>	<u>0</u>	<u>15</u>	<u>5</u>	<u>12</u>	<u>2</u>	<u>0</u>	<u>1</u>
Interior/Kootenays													
College of the Rockies (EKCC)	43	6	3	21	2	0	0	6	0	5	0	0	0
Okanagan University College	197	86	12	27	19	3	1	36	4	8	0	1	0
Selkirk College	92	29	7	8	2	1	0	16	10	19	0	0	0
UC of the Cariboo	118	55	13	12	12	4	2	13	6	1	0	0	0
	<u>450</u>	<u>176</u>	<u>35</u>	<u>68</u>	<u>35</u>	<u>8</u>	<u>3</u>	<u>71</u>	<u>20</u>	<u>33</u>	<u>0</u>	<u>1</u>	<u>0</u>
Vancouver Island													
Camosun College	902	423	76	42	31	21	3	148	134	21	0	1	2
Malaspina University-College	303	103	28	30	6	15	4	70	12	34	0	1	0
North Island College	97	27	6	4	2	3	0	27	19	8	0	0	1
	<u>1,302</u>	<u>553</u>	<u>110</u>	<u>76</u>	<u>39</u>	<u>39</u>	<u>7</u>	<u>245</u>	<u>165</u>	<u>63</u>	<u>0</u>	<u>2</u>	<u>3</u>
Total Non Lower Mainland	<u>1,825</u>	<u>757</u>	<u>150</u>	<u>149</u>	<u>74</u>	<u>47</u>	<u>10</u>	<u>331</u>	<u>190</u>	<u>108</u>	<u>2</u>	<u>3</u>	<u>4</u>
Lower Mainland													
Public													
BCIT	52	4	1	0	16	0	0	2	27	0	0	2	0
Capilano College	86	43	6	2	3	3	4	13	6	6	0	0	0
Douglas College	205	61	19	3	4	1	6	2	104	4	0	1	0
Kwantlen University College	137	48	13	4	8	6	3	15	33	5	0	1	1
UC of the Fraser Valley	53	15	5	6	3	2	1	14	3	4	0	0	0
Langara College	344	79	37	1	2	4	2	25	174	19	0	1	0
	<u>877</u>	<u>250</u>	<u>81</u>	<u>16</u>	<u>36</u>	<u>16</u>	<u>16</u>	<u>71</u>	<u>347</u>	<u>38</u>	<u>0</u>	<u>5</u>	<u>1</u>
Private													
Columbia College	27	11	7	0	2	0	0	7	0	0	0	0	0
Coquitlam College	27	20	6	0	1	0	0	0	0	0	0	0	0
	<u>54</u>	<u>31</u>	<u>13</u>	<u>0</u>	<u>3</u>	<u>0</u>	<u>0</u>	<u>7</u>	<u>0</u>	<u>0</u>	<u>0</u>	<u>0</u>	<u>0</u>
Total Lower Mainland	<u>931</u>	<u>281</u>	<u>94</u>	<u>16</u>	<u>39</u>	<u>16</u>	<u>16</u>	<u>78</u>	<u>347</u>	<u>38</u>	<u>0</u>	<u>5</u>	<u>1</u>
Total B.C. College Transfers	2,756	1,038	244	165	113	63	26	409	537	146	2	8	5
Total B.C. High School Entrants	931	427	102	22	20	61	35	254	1	7	1	1	0

Percentage Distribution

Non Lower Mainland													
Northern B.C.	100.0	38.4	6.8	6.8	0.0	0.0	0.0	20.5	6.8	16.4	2.7	0.0	1.4
Interior/Kootenays	100.0	39.1	7.8	15.1	7.8	1.8	0.7	15.8	4.4	7.3	0.0	0.2	0.0
Vancouver Island	100.0	42.5	8.4	5.8	3.0	3.0	0.5	18.8	12.7	4.8	0.0	0.2	0.2
Total Non Lower Mainland	100.0	41.5	8.2	8.2	4.1	2.6	0.5	18.1	10.4	5.9	0.1	0.2	0.2
Lower Mainland													
Public	100.0	28.5	9.2	1.8	4.1	1.8	1.8	8.1	39.6	4.3	0.0	0.6	0.1
Private	100.0	57.4	24.1	0.0	5.6	0.0	0.0	13.0	0.0	0.0	0.0	0.0	0.0
Total Lower Mainland	100.0	30.2	10.1	1.7	4.2	1.7	1.7	8.4	37.3	4.1	0.0	0.5	0.1
Grand Total College Transfers	100.0	37.7	8.9	6.0	4.1	2.3	0.9	14.8	19.5	5.3	0.1	0.3	0.2
High School Entrants	100.0	45.9	11.0	2.4	2.1	6.6	3.8	27.3	0.1	0.8	0.1	0.1	0.0

BA - Bachelor of Arts, BCOM - Bachelor of Commerce, BED - Bachelor of Education, BENG - Bachelor of Engineering, BFA - Bachelor of Fine Arts, BMUS - Bachelor of Music, BSC - Bachelor of Science, BSN - Bachelor of Science in Nursing, BSW - Bachelor of Social Work
 CERT - Certificate Programs , DIPL - Diploma Programs , LLB - Law

Table 17
Average Years to Credential for B.C. College Transfers Who Have Graduated
(1998/99 to 2002/03)

	# of Students	BA	BCOM	BED	BENG	BFA	BMUS	BSC	BSN	BSW	CERT	DIPL	LLB	Total
Northern B.C.														
College of New Caledonia	38	2.6	4.1	3.3				3.4	2.2	1.8	1.7			2.8
Northern Lights College	9	4.0	2.7						1.8	1.8				2.8
Northwest Community College	26	3.1	3.1	3.7				3.3		2.1			2.7	3.0
	73	3.0	3.6	3.4				3.4	2.1	2.0	1.7		2.7	2.9
Interior/Kootenays														
College of the Rockies (EKCC)	43	2.3	2.9	2.7	3.5			2.8		2.0				2.6
Okanagan University College	197	2.6	3.1	2.9	3.5	2.3	3.7	2.8	2.4	2.9		3.1		2.8
Selkirk College	92	2.5	3.0	3.6	3.9	2.7		3.2	1.6	2.1				2.6
UC of the Cariboo	118	2.6	2.7	3.8	4.0	2.9	3.2	2.6	2.2	2.5				2.9
	450	2.6	2.9	3.1	3.7	2.7	3.4	2.9	1.9	2.3		3.1		2.8
Vancouver Island														
Camosun College	902	2.7	2.7	3.0	3.0	2.6	3.0	2.9	1.6	2.4		3.4	4.5	2.6
Malaspina University-College	303	2.5	2.7	3.3	3.9	2.5	3.0	2.8	2.1	2.1		2.7		2.6
North Island College	97	2.6	2.9	4.0	2.4	1.8		3.0	1.6	2.6			3.1	2.6
	1,302	2.7	2.7	3.2	3.1	2.5	3.0	2.9	1.6	2.3		3.1	4.0	2.6
Total Non Lower Mainland	1,825	2.7	2.8	3.1	3.4	2.5	3.1	2.9	1.7	2.2	1.7	3.1	3.7	2.7
Public														
BCIT	52	2.9	2.7		2.9			3.2	2.9			4.4		2.9
Capilano College	86	2.6	2.8	3.2	2.9	2.3	3.4	2.9	2.2	2.2				2.6
Douglas College	205	2.4	2.4	4.0	3.4	2.7	2.2	3.0	1.8	2.0		1.4		2.1
Kwantlen University College	137	2.4	2.8	3.5	3.0	2.5	2.1	2.8	2.1	2.4		2.1	2.7	2.5
UC of the Fraser Valley	53	2.4	3.1	3.0	3.6	2.9	3.7	2.6	2.5	1.9				2.7
Langara College	344	2.5	2.4	2.9	4.6	2.0	2.2	2.5	1.8	2.4		4.1		2.1
	877	2.5	2.5	3.3	3.1	2.4	2.6	2.7	1.9	2.3		3.3	2.7	2.3
Private														
Columbia College	27	2.4	3.0		4.7			3.6						3.0
Coquitlam College	27	2.4	2.7		5.1									2.6
	54	2.4	2.9		4.8			3.6						2.8
Total Lower Mainland	931	2.5	2.6	3.3	3.3	2.4	2.6	2.8	1.9	2.3			2.7	2.3
Total B.C. College Transfers	2,756	2.6	2.7	3.2	3.3	2.5	2.8	2.9	1.8	2.2	1.7	3.2	3.5	2.5

BA - Bachelor of Arts, BCOM - Bachelor of Commerce, BED - Bachelor of Education, BENG - Bachelor of Engineering,
BFA - Bachelor of Fine Arts, BMUS - Bachelor of Music, BSC - Bachelor of Science, BSN - Bachelor Science in Nursing,
BSW - Bachelor of Social Work, CERT - Certificate Programs, DIPL - Diploma Programs, LLB - Law.

Section D

PROFILE OF STUDENTS WITH COLLEGE EXPERIENCE

Table 18
Students with College Experience Admitted to UVic by Year of Admission
(Excludes College Transfer Students)
(1998/99 to 2002/03)

Region/College	1998/99	1999/00	2000/01	2001/02	2002/03	Total
Non Lower Mainland						
Northern B.C.						
College of New Caledonia	6	8	10	12	11	47
Northern Lights College	6	3	4	2	5	20
Northwest Community College	3	3	8	6	9	29
	<u>15</u>	<u>14</u>	<u>22</u>	<u>20</u>	<u>25</u>	<u>96</u>
Interior/Kootenays						
College of the Rockies (EKCC)	7	6	6	9	3	31
Okanagan University College	66	55	38	40	31	230
Selkirk College	7	3	4	5	14	33
UC of the Cariboo	20	17	19	11	15	82
	<u>100</u>	<u>81</u>	<u>67</u>	<u>65</u>	<u>63</u>	<u>376</u>
Vancouver Island						
Camosun College	86	58	84	102	102	432
Malaspina University-College	82	61	50	34	31	258
North Island College	15	18	12	22	7	74
	<u>183</u>	<u>137</u>	<u>146</u>	<u>158</u>	<u>140</u>	<u>764</u>
Total Non Lower Mainland	<u>298</u>	<u>232</u>	<u>235</u>	<u>243</u>	<u>228</u>	<u>1,236</u>
Lower Mainland						
Public						
BCIT	20	8	10	12	14	64
Capilano College	25	19	28	20	25	117
Douglas College	14	33	26	22	35	130
Kwantlen University College	16	21	10	20	14	81
UC of the Fraser Valley	13	8	13	11	12	57
Langara College	29	17	40	34	35	155
	<u>117</u>	<u>106</u>	<u>127</u>	<u>119</u>	<u>135</u>	<u>604</u>
Private						
Columbia College	2	0	3	3	1	9
Coquitlam College	0	1	1	3	1	6
	<u>2</u>	<u>1</u>	<u>4</u>	<u>6</u>	<u>2</u>	<u>15</u>
Total Lower Mainland	<u>119</u>	<u>107</u>	<u>131</u>	<u>125</u>	<u>137</u>	<u>619</u>
Total Students with College Experience	417	339	366	368	365	1,855

Percentage Distribution

Non Lower Mainland						
Nothern B.C.	3.6	4.1	6.0	5.4	6.8	5.2
Interior/Kootenays	24.0	23.9	18.3	17.7	17.3	20.3
Vancouver Island	43.9	40.4	39.9	42.9	38.4	41.2
Total Non Lower Mainland	<u>71.5</u>	<u>68.4</u>	<u>64.2</u>	<u>66.0</u>	<u>62.5</u>	<u>66.6</u>
Lower Mainland						
Public	28.1	31.3	34.7	32.3	37.0	32.6
Private	0.5	0.3	1.1	1.6	0.5	0.8
Total Lower Mainland	<u>28.5</u>	<u>31.6</u>	<u>35.8</u>	<u>34.0</u>	<u>37.5</u>	<u>33.4</u>
Grand Total	<u>100.0</u>	<u>100.0</u>	<u>100.0</u>	<u>100.0</u>	<u>100.0</u>	<u>100.0</u>

Table 19
Students with College Experience Admitted to UVic by Age Interval
(Excludes College Transfer Students)
(1998/99 to 2002/03)

Region/College	<20	20-24	25-29	30-34	35-39	>39	Total	Average
Non Lower Mainland								
Northern B.C.								
College of New Caledonia	4	10	8	8	9	8	47	31.0
Northern Lights College	3	4	4	3	2	4	20	29.7
Northwest Community College	6	5	7	4	3	4	29	28.8
	<u>13</u>	<u>19</u>	<u>19</u>	<u>15</u>	<u>14</u>	<u>16</u>	<u>96</u>	<u>30.1</u>
Interior/Kootenays								
College of the Rockies (EKCC)	5	10	5	4	4	3	31	27.1
Okanagan University College	21	64	40	22	18	65	230	31.3
Selkirk College	6	8	7	4	3	5	33	28.6
UC of the Cariboo	10	16	23	7	6	20	82	30.3
	<u>42</u>	<u>98</u>	<u>75</u>	<u>37</u>	<u>31</u>	<u>93</u>	<u>376</u>	<u>30.5</u>
Vancouver Island								
Camosun College	74	165	81	50	31	31	432	26.1
Malaspina University-College	26	87	48	28	22	47	258	29.4
North Island College	17	14	16	6	6	14	73	28.6
	<u>117</u>	<u>266</u>	<u>145</u>	<u>84</u>	<u>59</u>	<u>92</u>	<u>763</u>	<u>27.5</u>
Total Non Lower Mainland	<u>172</u>	<u>383</u>	<u>239</u>	<u>136</u>	<u>104</u>	<u>201</u>	<u>1,235</u>	<u>28.6</u>
Lower Mainland								
Public								
BCIT	1	13	14	10	6	20	64	33.2
Capilano College	19	25	30	14	8	20	116	29.0
Douglas College	7	36	30	23	13	21	130	30.0
Kwantlen University College	15	36	16	6	4	4	81	25.0
UC of the Fraser Valley	19	10	10	4	6	8	57	27.1
Langara College	17	35	29	23	14	37	155	31.3
	<u>78</u>	<u>155</u>	<u>129</u>	<u>80</u>	<u>51</u>	<u>110</u>	<u>603</u>	<u>29.5</u>
Private								
Columbia College	3	5	0	1	0	0	9	21.5
Coquitlam College	3	1	1	1	0	0	6	22.8
	<u>6</u>	<u>6</u>	<u>1</u>	<u>2</u>	<u>0</u>	<u>0</u>	<u>15</u>	<u>22.0</u>
Total Lower Mainland	<u>84</u>	<u>161</u>	<u>130</u>	<u>82</u>	<u>51</u>	<u>110</u>	<u>618</u>	<u>29.4</u>
Total Students with College Experience	256	544	369	218	155	311	1,853	28.8

	Percentage Distribution						
Non Lower Mainland							
Northern B.C.	13.5	19.8	19.8	15.6	14.6	16.7	100.0
Interior/Kootenays	11.2	26.1	19.9	9.8	8.2	24.7	100.0
Vancouver Island	15.3	34.9	19.0	11.0	7.7	12.1	100.0
Total Non Lower Mainland	<u>13.9</u>	<u>31.0</u>	<u>19.4</u>	<u>11.0</u>	<u>8.4</u>	<u>16.3</u>	<u>100.0</u>
Lower Mainland							
Public	12.9	25.7	21.4	13.3	8.5	18.2	100.0
Private	40.0	40.0	6.7	13.3	0.0	0.0	100.0
Total Lower Mainland	<u>13.6</u>	<u>26.1</u>	<u>21.0</u>	<u>13.3</u>	<u>8.3</u>	<u>17.8</u>	<u>100.0</u>
Grand Total	<u>13.8</u>	<u>29.4</u>	<u>19.9</u>	<u>11.8</u>	<u>8.4</u>	<u>16.8</u>	<u>100.0</u>

Table 20
Students with College Experience Admitted to UVic by Gender
(Excludes College Transfer Students)
(1998/99 to 2002/03)

Region/College	Male	Female	Total	Percentage	
				Male	Female
Non Lower Mainland					
Northern B.C.					
College of New Caledonia	13	34	47	27.7	72.3
Northern Lights College	3	17	20	15.0	85.0
Northwest Community College	8	21	29	27.6	72.4
	24	72	96	25.0	75.0
Interior/Kootenays					
College of the Rockies (EKCC)	8	23	31	25.8	74.2
Okanagan University College	58	172	230	25.2	74.8
Selkirk College	14	19	33	42.4	57.6
UC of the Cariboo	18	64	82	22.0	78.0
	98	278	376	26.1	73.9
Vancouver Island					
Camosun College	147	285	432	34.0	66.0
Malaspina University-College	69	189	258	26.7	73.3
North Island College	21	53	74	28.4	71.6
	237	527	764	31.0	69.0
Total Non Lower Mainland	359	877	1,236	29.0	71.0
Lower Mainland					
Public					
BCIT	25	39	64	39.1	60.9
Capilano College	52	65	117	44.4	55.6
Douglas College	41	89	130	31.5	68.5
Kwantlen University College	23	58	81	28.4	71.6
UC of the Fraser Valley	13	44	57	22.8	77.2
Langara College	45	110	155	29.0	71.0
	199	405	604	32.9	67.1
Private					
Columbia College	6	3	9	66.7	33.3
Coquitlam College	3	3	6	50.0	50.0
	9	6	15	60.0	40.0
Total Lower Mainland	208	411	619	33.6	66.4
Total Students with College Experience	567	1,288	1,855	30.6	69.4

APPENDIX

Definitions and Technical Notes

Session: The academic year at The University of Victoria is divided into two sessions: a four-month summer session (May to August), and an eight-month winter session (September to April). This contrasts with the semester or trimester system containing two or three four-month periods of study.

B.C. College Transfers: These are students admitted to the University of Victoria, primarily on the basis of their performance at a B.C. college or colleges, and who register and begin work in at least one UVic session. Those who withdraw, either in the first or a subsequent session, are included. For the purposes of this report, students who have earned transfer credits from more than one B.C. college are grouped with the college where the majority of these credits were earned. With few exceptions, B.C. college transfer students have earned a minimum of 12 units of transferable academic credit, at least half of which has been acquired at one or more B.C. colleges. In most instances, B.C. college transfers have earned 12 or more units of transfer at the one college they have attended.

B.C. High/Secondary School Students: These are students admitted to the University of Victoria, on the basis of their performance at a B.C. high school, who register and begin work in at least one UVic session. Those who withdraw, either in the first or a subsequent session, are included. Both students who enter UVic immediately after secondary school, and those who enter after some delay, are included.

Grading Systems: The University of Victoria uses a grade point system to evaluate course performance. A grade point is a numerical value given to a letter grade, with 9 equivalent to A⁺, 8 to A, 7 to A⁻, 6 to B⁺, 5 to B, 4 to B⁻, 3 to C⁺, 2 to C, 1 to D, and 0 to failure. The weighted average of such grades is called a grade point average. This compares with the four point (0-4) and percentage (0-100) systems used at other institutions. However, B.C. college transfers and B.C. high school students are admitted to UVic based on a percentage average. These admission averages are derived from a variety of incoming grading systems, and are not recalculated by UVic to a Grade Point system.

Grade Point Average (GPA): The university recognizes three types of grade point averages for its students. The sessional GPA is based on all grades earned during a given winter or summer session. The graduating GPA of a student in a bachelor's degree program is based on grades in 300 and 400 level (and in Education 700 level) courses acceptable within the degree program being taken. The cumulative GPA is based on all courses taken while at the university. While other GPA measures and concepts might have resulted in easier comparisons with other institutions, these are the measures accepted at UVic (and calculated/recorded on its student records system).

The Effect of Differing Academic Regulations: Universities adopt numerous academic policies/regulations that differ from institution to institution, and often use different terminology to refer to essentially similar concepts. Inter-institutional comparisons are therefore sometimes difficult. Caution should be exercised when comparing this report's findings to those in the corresponding Simon Fraser University, University of British Columbia and University of Northern British Columbia reports.

Graduation Rates: Graduation rates in this report are based on those students admitted in 1998/99 or 1999/00 who had graduated by May 2003. Because B.C. College Transfers have begun their work at UVic at a higher year level than B.C. High School Students, a higher percentage of the former will have graduated. The high school students who have graduated will include many who are highly motivated and have proceeded through UVic at a full-time rate. As such, cohort comparisons of graduation rates should be made with caution.

Full-Time/Part-Time Status: All non-coop undergraduate students registered in at least twelve units of course work during a given winter session and all coop undergraduate students are classified as full-time. All non-coop undergraduate students registered in less than twelve units of course work during a given winter session are classified as part-time. Full-time and part-time status is not defined for summer sessions.