

ALL ABOUT BCCAT



A brief overview about the BC Council on Admissions & Transfer, including BCCAT's mandate, role, responsibilities, services, publications, and resources. For more information see bccat.ca/about/bccat

WHO WE ARE

BCCAT was established in 1989, by the Ministry responsible for advanced education, to oversee BC's post-secondary transfer system.

Council members are appointed by the Minister to represent BC post-secondary sectors, and stakeholders.

The Council oversees three standing committees: Admissions, Research, and Transfer & Articulation.

WHAT WE DO

BCCAT connects BC's post-secondary institutions, education ministries, and public and private education sectors.

We facilitate transfer, articulation, and admission arrangements among BC's Transfer System member institutions.

Facilitation & Collaboration

Overseeing and facilitating articulation committees and BC's transfer community, and collaborating with transfer partners to advance learner mobility.

Technological Services

Leveraging BCCAT Transfer Credit System (TCS) online resources, building on existing processes and technologies that are cost-effective and efficient.

Research & Publications

Undertaking comprehensive research on substantive issues to inform policies and processes that better support student access, success and mobility.

ARTICULATION COMMITTEES (& THE TRANSFER COMMUNITY)

BCCAT oversees BC's post-secondary transfer system. This includes:

- Facilitating discussion on emerging issues
- Coordinating and supporting 65 provincial articulation committees
- Hosting the Joint Annual Meeting (JAM)
- Funding Articulation Committee Projects

Explore BCCAT videos at
youtube.com/@bccat_org



JOINT ANNUAL MEETING

Every year, BCCAT hosts the Joint Annual Meeting (JAM), bringing together the higher education, articulation, and administrative communities across the province of BC and beyond to connect, share, and learn about issues impacting student transfer and mobility. See bccat.ca/articulation/jam



Articulation resources are available at bccat.ca/articulation/info



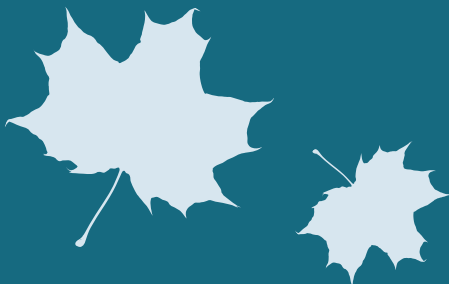
JAM highlights & session videos

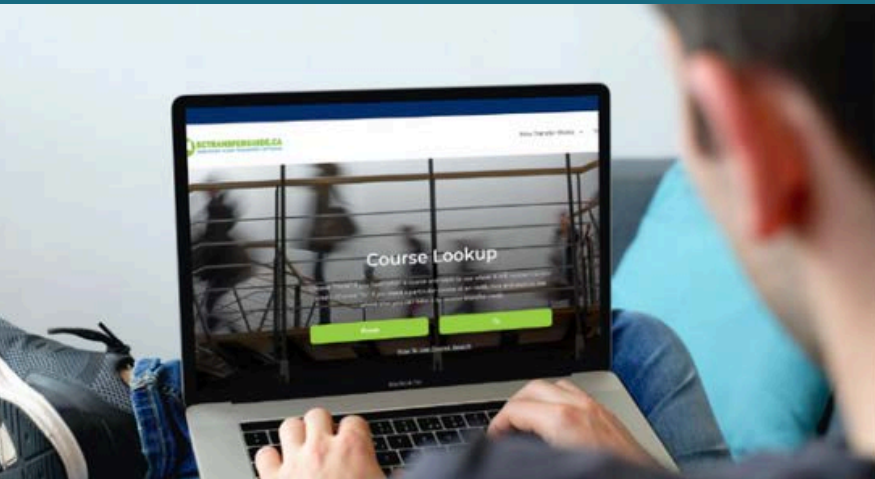


BEYOND BC

BCCAT also collaborates with post-secondary partners across Canada and around the world in support of learner mobility within and across borders. This includes:

- working with provincial transfer counterparts
- sharing & leveraging technologies
- undertaking collaborative research projects
- participating with national initiatives to facilitate credit and credential mobility





BCCAT leverages Transfer Credit System (TCS) online resources, building on existing processes and technologies to deliver services that are cost-effective and efficient for students, post-secondary institutions, and the BC government.

BCTRANSFERGUIDE.CA

BCTransferGuide.ca is used by students, advisors, and educators from across BC, Canada, and around the world. This web resource enables learners to find the transfer pathway that works for them, saving significant time and money.

- **Course-to-Course Agreements**
- **Program Pathways**
- **Block Transfer**
- **Degree Partnerships**
- **Associate Degrees**
- **Advanced Placement & International Baccalaureate**

378.4K Course Equivalencies (BC & External) ~ 1,600+ Block Transfer Agreements

TCS / ONLINE SERVICES

BCCAT manages the Transfer Credit System (TCS) that underlies the BC Transfer Guide database. The TCS enables institutions to review and process transfer agreements, and our "transfer widget" allows institutions to deploy their own customized transfer search tools on their websites.

Check out these transfer planning resources on our "For the Students" video playlist at youtube.com/@bccat_org

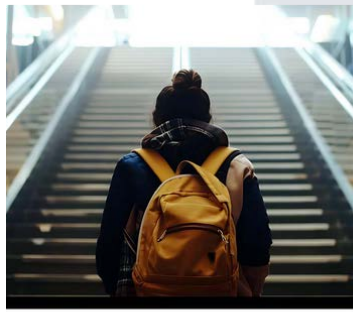
WATCH VIDEO



TRANSFER STORIES

Jerry Mundi





Upgrading Programs
Student Transitions from Adult Basic Education Upgrading Programs into Further Studies at BC Post-Secondary Institutions

Prepared for BCCAT by the Task Force
August 2024



Collection and Use of Student Data: Ethnicity, and Ancestry

Collection and use of student data on race, ethnicity, and ancestry for equity, equity, and inclusion in BC public post-secondary institutions

Prepared for BCCAT by the Task Force
August 2024



BCCAT undertakes comprehensive research on substantive issues to better understand student demand, patterns and demographics, and enables us to support student access and mobility in ways that are strategic, effective, and efficient.

- **transfer & articulation**
- **admission & credit assessment**
- **student access, mobility, & success**
- **high school transitions**
- **post-secondary capacity**
- **credentials & pathways**

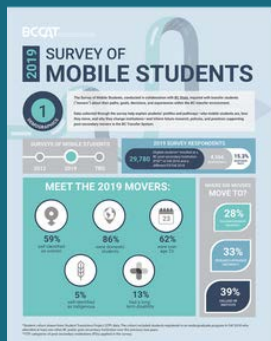
For more information, see bccat.ca/research and check out our “Research Factor” videos at youtube.com/@bccat_org.

PUBLICATIONS & RESOURCES



Transfer Students Profile & Performance
Profile and Performance of BC Transfer Students (2018/19-2022/23)

Prepared for BCCAT by the Task Force, April 2024



2019 SURVEY OF MOBILE STUDENTS

Table

The Survey of Mobile Students, conducted in collaboration with the BC Council on Admissions and Transfer, provides a comprehensive overview of the experiences and challenges of mobile students in BC post-secondary institutions.

Key findings from the survey include:

• 29,780 mobile students participated in the survey.

• 13% of mobile students reported that they had a difficult time adjusting to their new post-secondary institution.

• 28% of mobile students reported that they had a difficult time finding housing in their new post-secondary institution.

• 33% of mobile students reported that they had a difficult time finding transportation in their new post-secondary institution.

• 39% of mobile students reported that they had a difficult time finding financial support in their new post-secondary institution.

• 5% of mobile students reported that they had a difficult time finding academic support in their new post-secondary institution.

• 13% of mobile students reported that they had a difficult time finding social support in their new post-secondary institution.

• 28% of mobile students reported that they had a difficult time finding emotional support in their new post-secondary institution.

• 33% of mobile students reported that they had a difficult time finding financial support in their new post-secondary institution.

• 39% of mobile students reported that they had a difficult time finding academic support in their new post-secondary institution.

• 5% of mobile students reported that they had a difficult time finding social support in their new post-secondary institution.

• 13% of mobile students reported that they had a difficult time finding emotional support in their new post-secondary institution.

• 28% of mobile students reported that they had a difficult time finding financial support in their new post-secondary institution.

• 33% of mobile students reported that they had a difficult time finding academic support in their new post-secondary institution.

• 39% of mobile students reported that they had a difficult time finding social support in their new post-secondary institution.

• 5% of mobile students reported that they had a difficult time finding emotional support in their new post-secondary institution.

• 13% of mobile students reported that they had a difficult time finding financial support in their new post-secondary institution.

• 28% of mobile students reported that they had a difficult time finding academic support in their new post-secondary institution.

• 33% of mobile students reported that they had a difficult time finding social support in their new post-secondary institution.

• 39% of mobile students reported that they had a difficult time finding emotional support in their new post-secondary institution.

• 5% of mobile students reported that they had a difficult time finding financial support in their new post-secondary institution.

• 13% of mobile students reported that they had a difficult time finding academic support in their new post-secondary institution.

• 28% of mobile students reported that they had a difficult time finding social support in their new post-secondary institution.

• 33% of mobile students reported that they had a difficult time finding emotional support in their new post-secondary institution.

• 39% of mobile students reported that they had a difficult time finding financial support in their new post-secondary institution.

• 5% of mobile students reported that they had a difficult time finding academic support in their new post-secondary institution.

• 13% of mobile students reported that they had a difficult time finding social support in their new post-secondary institution.

• 28% of mobile students reported that they had a difficult time finding emotional support in their new post-secondary institution.

• 33% of mobile students reported that they had a difficult time finding financial support in their new post-secondary institution.

• 39% of mobile students reported that they had a difficult time finding academic support in their new post-secondary institution.

• 5% of mobile students reported that they had a difficult time finding social support in their new post-secondary institution.

• 13% of mobile students reported that they had a difficult time finding emotional support in their new post-secondary institution.

• 28% of mobile students reported that they had a difficult time finding financial support in their new post-secondary institution.

• 33% of mobile students reported that they had a difficult time finding academic support in their new post-secondary institution.

• 39% of mobile students reported that they had a difficult time finding social support in their new post-secondary institution.

• 5% of mobile students reported that they had a difficult time finding emotional support in their new post-secondary institution.

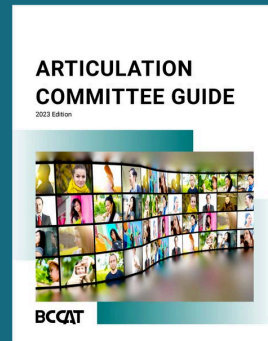
• 13% of mobile students reported that they had a difficult time finding financial support in their new post-secondary institution.



STEPPING UP

2022 ANNUAL REVIEW

BCCAT



ARTICULATION COMMITTEE GUIDE

2023 Edition

BCCAT



SUMMER MELT

Evaluating “Summer Melt” for BC Post-Secondary Institutions

Prepared for BCCAT by the Task Force, April 2024

Table

The “Summer Melt” report provides a comprehensive overview of the experiences and challenges of students who experience a “summer melt” between high school and post-secondary education.

Key findings from the report include:

• 28% of students who experienced a “summer melt” reported that they had a difficult time finding housing in their new post-secondary institution.

• 33% of students who experienced a “summer melt” reported that they had a difficult time finding transportation in their new post-secondary institution.

• 39% of students who experienced a “summer melt” reported that they had a difficult time finding financial support in their new post-secondary institution.

• 5% of students who experienced a “summer melt” reported that they had a difficult time finding academic support in their new post-secondary institution.

• 13% of students who experienced a “summer melt” reported that they had a difficult time finding social support in their new post-secondary institution.

• 28% of students who experienced a “summer melt” reported that they had a difficult time finding emotional support in their new post-secondary institution.

• 33% of students who experienced a “summer melt” reported that they had a difficult time finding financial support in their new post-secondary institution.

• 39% of students who experienced a “summer melt” reported that they had a difficult time finding academic support in their new post-secondary institution.

• 5% of students who experienced a “summer melt” reported that they had a difficult time finding social support in their new post-secondary institution.

• 13% of students who experienced a “summer melt” reported that they had a difficult time finding emotional support in their new post-secondary institution.

• 28% of students who experienced a “summer melt” reported that they had a difficult time finding financial support in their new post-secondary institution.

• 33% of students who experienced a “summer melt” reported that they had a difficult time finding academic support in their new post-secondary institution.

• 39% of students who experienced a “summer melt” reported that they had a difficult time finding social support in their new post-secondary institution.

• 5% of students who experienced a “summer melt” reported that they had a difficult time finding emotional support in their new post-secondary institution.

• 13% of students who experienced a “summer melt” reported that they had a difficult time finding financial support in their new post-secondary institution.

• 28% of students who experienced a “summer melt” reported that they had a difficult time finding academic support in their new post-secondary institution.

• 33% of students who experienced a “summer melt” reported that they had a difficult time finding social support in their new post-secondary institution.

• 39% of students who experienced a “summer melt” reported that they had a difficult time finding emotional support in their new post-secondary institution.

• 5% of students who experienced a “summer melt” reported that they had a difficult time finding financial support in their new post-secondary institution.

• 13% of students who experienced a “summer melt” reported that they had a difficult time finding academic support in their new post-secondary institution.

• 28% of students who experienced a “summer melt” reported that they had a difficult time finding social support in their new post-secondary institution.

• 33% of students who experienced a “summer melt” reported that they had a difficult time finding emotional support in their new post-secondary institution.

• 39% of students who experienced a “summer melt” reported that they had a difficult time finding financial support in their new post-secondary institution.

• 5% of students who experienced a “summer melt” reported that they had a difficult time finding academic support in their new post-secondary institution.

• 13% of students who experienced a “summer melt” reported that they had a difficult time finding social support in their new post-secondary institution.

• 28% of students who experienced a “summer melt” reported that they had a difficult time finding emotional support in their new post-secondary institution.

• 33% of students who experienced a “summer melt” reported that they had a difficult time finding financial support in their new post-secondary institution.

• 39% of students who experienced a “summer melt” reported that they had a difficult time finding academic support in their new post-secondary institution.

• 5% of students who experienced a “summer melt” reported that they had a difficult time finding social support in their new post-secondary institution.

• 13% of students who experienced a “summer melt” reported that they had a difficult time finding emotional support in their new post-secondary institution.

• 28% of students who experienced a “summer melt” reported that they had a difficult time finding financial support in their new post-secondary institution.

• 33% of students who experienced a “summer melt” reported that they had a difficult time finding academic support in their new post-secondary institution.

• 39% of students who experienced a “summer melt” reported that they had a difficult time finding social support in their new post-secondary institution.

• 5% of students who experienced a “summer melt” reported that they had a difficult time finding emotional support in their new post-secondary institution.

----- research reports * infographics * annual reviews * articulation resources * summaries -----

BCCAT publications are searchable at bccat.ca/publications



info@bccat.ca



bccat.ca
bctransferguide.ca



[@bccat_org](https://twitter.com/bccat_org)
[@bctransferguide](https://twitter.com/bctransferguide)



youtube.com/@bccat_org



[@bctransferguide.ca](https://instagram.com/bctransferguide)



bc-council-on-admissions-&-transfer



scan to view/
download
this document at
bccat.ca/about/bccat

