



# BC Transfer Guide External Equivalences

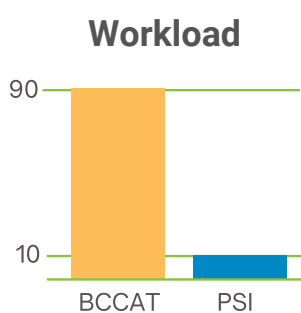
## ONBOARDING OVERVIEW

The BC Transfer Guide now includes transfer equivalencies to BC post-secondary institutions (PSIs) from across the country and the globe, in addition to other BC Transfer System members. This includes over 60,000 non-BC equivalencies from 452 institutions in 33 countries.



### WHAT IS NEEDED TO ONBOARD?

1. Signed Service Level Agreement to publish external equivalencies in the BC Transfer Guide.
2. Data extract from internal tables provided by the PSI to BCCAT (optional).
3. Use the TCS to add and maintain external equivalencies.



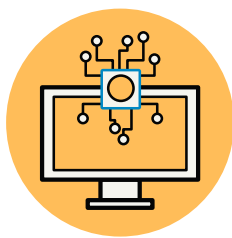
### WHO DOES WHAT?

- **PSI** provides the data and the final consent to having data imported.
- **BCCAT** does the data analysis, review and validation, consults with the PSI to confirm the data to be imported and provides training as required for the Transfer Credit System (TCS).



### HOW LONG DOES IT TAKE?

Depending on the volume of data, the whole process can normally be accomplished in one to three months. BCCAT completes approximately 90% of the work required to onboard.



### WHAT IS THE BENEFIT?

- Once the data is imported into the TCS, the TCS can be used to manage external equivalencies the same as BC articulation requests. This enables a consistent workflow and user interface for faculty and staff.
- External equivalencies become available through the BC Transfer Guide, providing greater profile for institutions and transparent information for non-BC transfer students.
- Institutions also have access to technology that enables your website and systems to connect directly to the BC Transfer Guide enabling them to create their own transfer search portals on their home website.

## QUESTIONS?

Mike Winsemann  
Director, Transfer & Technology  
mwinsemann@bccat.ca

Jennifer Kook  
Manager, Technology Services  
jkook@bccat.ca